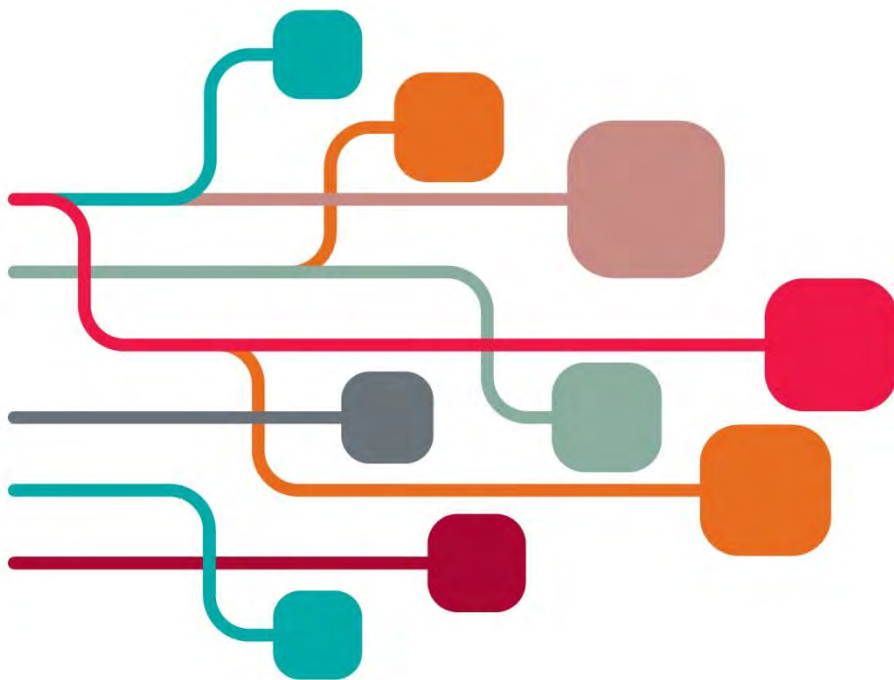


1 December 2016

SCONUL Library Design Awards and Showcase



Museum of London
150 London Wall, London EC2Y 5HN

Contents

Event programme	page 3
Venue information	page 5
Design Showcase	page 7
Speaker biographies	page 8
List of delegates	page 20
The SCONUL Library Design Awards	page 25
Library Design Awards shortlisted libraries	page 27
Brynmor Jones Library, University of Hull	page 27
John Paul II Library, Maynooth University	page 31
Wellcome Library and Reading Room, Wellcome Collection	page 35
The Hive, University of Worcester	page 41
Heritage Quay, University of Huddersfield	page 47
Teesside University Library, Teesside University	page 51
Cruciform Hub, University College London	page 57
Exhibitors	page 63



Wifi information

Wifi is available within the Museum of London for all SCONUL delegates. To connect to the internet please follow the steps below:

- Connect to: Network: MOL Events
- Password: MOLevents2011



#librarydesign16

Event programme

9:30	<i>Registration, coffee and design showcase</i>
10:30	Welcome from Mark Toole, Chair of SCONUL and Liz Waller, Chair of the SCONUL Library Design Awards Panel
10.40	Keynote address: The future of learning environments Alexi Marmot, Professor of Facility and Environment Management, Bartlett Faculty of the Built Environment, University College London
11.30	Presentations from the shortlisted libraries under 2,000 square meters <ul style="list-style-type: none"> • Heritage Quay, University of Huddersfield Sue White, Director of Computing and Library and Sarah Wickham, University Archivist & Records Manager, Heritage Quay, University of Huddersfield • Teesside University Library, Teesside University Liz Jolly, Director of Library and Information Services and Denise Turner, Assistant Director (Learning and Research Support, Customer Services), Teesside University • The Cruciform Hub, University College London Dr Paul Ayris, Pro Vice-Provost and Director of Library Services, University College London
12.15	Announcement of winner
12.20	<i>Lunch, design award showcase and presentations</i>
13.30	Keynote address: Collaborating for the student experience Roger FitzGerald, Chairman, ADP Architecture and Jon Roylance, Higher Education Sector Lead, ADP Architecture
14.20	<i>Coffee break and design showcase</i>
15.00	Presentations from the shortlisted libraries over 2,000 square meters <ul style="list-style-type: none"> • Brynmor Jones Library, University of Hull Michelle Anderson, University Librarian and Chris Awre, Head of Information Services, University of Hull • John Paul II Library, Maynooth University Cathal McCauley, University Librarian, Maynooth University and St. John Handley, Director, Scott Tallon Walker • Wellcome Library and Reading Room, Wellcome Collection Dr Simon Chaplin, Director of Culture & Society, Wellcome Trust; Gabi Code, Associate, WilkinsonEyre Architects; Geoff Shearcroft, Director, AOC Architecture; Chris Bunker, Construction Projects Director, Wellcome Trust and Zina Sabovic, Head of Collections Management and Operations, Wellcome Library • The Hive, University of Worcester Judith Keene, University Librarian, University of Worcester; Laura Worsfold, Hive Business Development Manager, The Hive, Worcester and Janine Downes, Library Services Manager, The Hive, University of Worcester
16.00	Announcement of winner
16.05	Closing remarks Mark Toole, Chair of SCONUL
16.20	Close and departure



The UK's first choice
for library moves



**Meet Harrow Green's library and archive experts at the
SCONUL Library Design Awards and Showcase**

Join us at 12.30 pm in the e-Learning Studio to find out how we handle,
pack and move books, materials and other valuable items.

Our services include:

- Project management and planning moves
- National Conservation Service approved storage facilities
- Sequential book and materials moving
- Furniture, equipment and IT moves and storage
- Merging and integrating book collections
- Environmental disposal of books, furniture and IT

Previous customers include: The British Library, BBC Archives, John Rylands Library, West Yorkshire Archives, University of Birmingham Library, Gwent Archives, Manchester Central Library, National Railway Museum, King's College London, Lancaster University Library, Robert Gordon University Library



This is one of the greatest libraries in the world and protecting our collections is paramount. Harrow Green knew this and ran a very precise operation, tight on process and focused on quality. They were an exemplary partner, from their methodologies to how they managed cost.

- John Hodgson, Keeper of Manuscripts and Archives, John Rylands Library



0345 603 8774



www.harrowgreen.com

Venue information

The SCONUL Library Design Awards and Showcase will take place in the Clore Learning Centre and Weston Theatre at the Museum of London. Access is via the Museum of London main entrance and signage will guide delegates to the SCONUL registration desk.

On arrival, coffee will be served in the Clore Learning Centre on Upper Level 1. The Design Awards ceremony will be held in the Weston Theatre on Lower Level 1.

Getting to the Museum of London

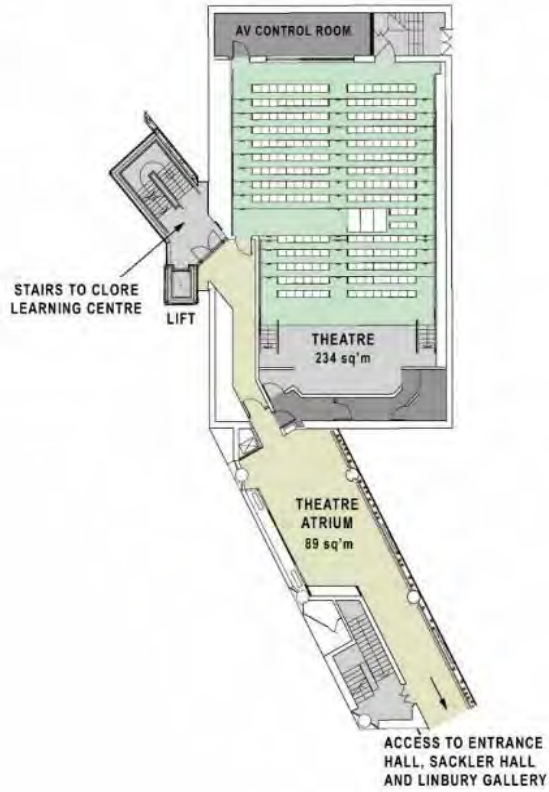
Museum of London
150 London Wall
London
EC2Y 5HN

<http://www.museumoflondon.org.uk/museum-london/plan-your-visit>

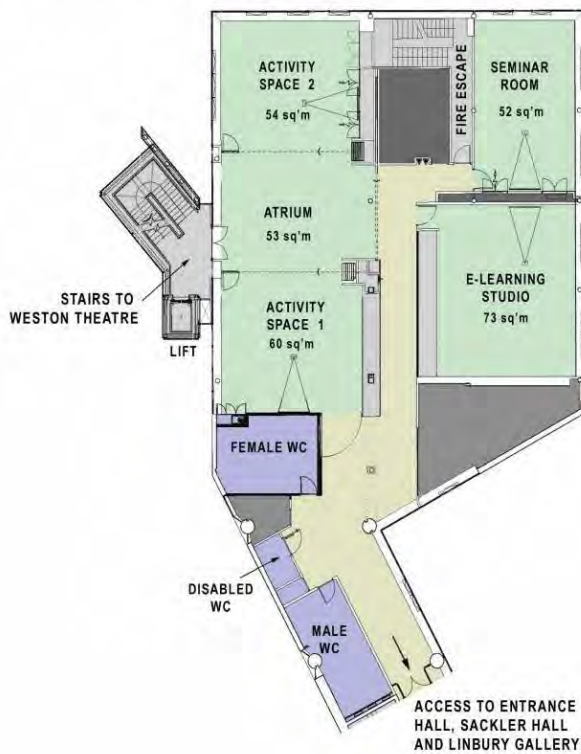


Map of the Conference Centre

WESTON THEATRE LOWER LEVEL 1



CLORE LEARNING CENTRE UPPER LEVEL 1



Design Showcase

The Design Showcase is taking place on Upper Level 1 and has a number of elements:

- **Photo exhibition** of the winning libraries
- **Exhibition stands** from library design suppliers
- **Presentations on design issues.** Two 20 minute presentations from sponsors will be held Upper Level 1. Spaces are available on a first-come, first-served basis. Please feel free to take lunch into the presentations.

12.30 **How to do a successful library or archive move**, e-Learning Studio, from Harrow Green.

Experts from Harrow Green's library and archive division will describe and demonstrate their skills and experience in general and special collection moves. They will explain how detailed planning and surveying the site, books and items enables them to decide on which materials and methods to use. As part of the presentation they will demonstrate how they pack and move books and items and carefully handle, wrap and pack rare and valuable books. Also, they will explain how they merge, separate collections and sequentially move items and re-pitch shelving. Join them at 12.30 pm in the e-Learning Studio to understand how a library/archive move is professionally undertaken by a company with over 30 years' experience and a long list of highly satisfied library and archive customers.

13.00 **Storage solutions for modern academic libraries**, Seminar Room, from Bruynzeel

Learn more about how a design-led approach can deliver elegant, space-saving storage solutions within a modern academic library. Referencing Bruynzeel Storage Systems' installations at Heritage Quay, Teesside University and the University of West London, the presentation will explore:

- Mobile shelving systems – electronic vs. manual
- Double decker storage
- Using integrated graphics and themes
- Bespoke solutions for objects and special collections
- Auto-switched LED lighting
- Four-post shelving or traditional cantilever?

The presentation will be hosted by Andy Duck. Bruynzeel Storage Systems is a leading supplier of storage systems to the HE sector, and has pioneered the use of electronic mobile storage in student access areas. There will be an opportunity to ask questions at the end of the presentation.

Speaker biographies in order of appearance



Mark Toole

Head of Libraries and Learning Resources, Nottingham Trent University and Chair of SCONUL

Mark has been Head of Libraries and Learning Resources at Nottingham Trent University since January 2014. Previous posts include Director of Information Services at the Universities of Stirling and Brighton and management posts at the University of Kent and the LSE.

He is currently Chair of SCONUL and chairs the Jisc Knowledge Base+ Advisory Board. He is also a member of the EDINA Management Board.



Liz Waller

Head of Library and Archives at the University of York

An English graduate from Leeds University, with an MA from Leeds Polytechnic, Liz has over 30 years' experience of library work in the Higher Education sector. She has expertise in information literacy and graduate skills and whilst at Leeds Metropolitan University held an institutional teaching fellowship. Liz has published in the areas of skills development and space planning. As Head of Public Service Strategy at the University of Leeds, she refurbished the Health Sciences Library in 2007 and 2008. At York Liz leads the Library & Archives Team and in 2012 completed the extensive refurbishment and extension to the University Library there. Her current areas of interest include Research Data Management, Digital Scholarship and Collections Futures. A member of the SCONUL Transformation Group, Liz led the SCONUL Design Awards in 2013 and 2016.



Alexi Marmot

Professor of Facility and Environment Management,
Bartlett Faculty of the Built Environment, University College
London

Alexi combines academic and professional roles as Professor of Facility and Environment Management at the Bartlett Faculty of the Built Environment at University College London (UCL), and as founding director of Alexi Marmot Associates (AMA), a consultancy focused on evidence-based design.

Alexi's UCL research focuses on spaces for learning and workplaces. She led the *Active Buildings* study of physical activity within workplaces; research for Corenet on the *Art and Science of Workplace* and is supervising several doctoral researchers on *Workplace Choice*, on *Regional and Corporate Culture*, and on *Changing cooling in office buildings*. She leads the Bartlett Global Commission for Learning Spaces and is Principal Investigator for a project, *Modeling Complex Learning Spaces*, funded by the Australian Research Council, with the University of Sydney.

Through AMA she has been involved in library designs for the National Library of Greece, completed in 2016 and for libraries and learning spaces for several universities including Nottingham, Sheffield Hallam, UAL, UCL and Bath Spa University, and civic libraries in Newcastle and Southwark. Alexi advises various bodies including the UK government through the Property Advisory Panel; is a member of the British Council for Offices Research Group; led one strand of *Digital Built Britain* (March 2015) developed for BIS; has been an advisor to the Cabinet Office Government Property Unit on *Government Soft Landings*; to the British Standards Institute Facility Management Committee; the Asset Skills FM board; and to various committees within the RIBA. As an Enabler for the Commission on Architecture and the Built Environment, she has advised on the design of many civic, cultural and medical buildings across the UK. She is a governor of the Working Men's College Camden, Europe's oldest adult education institute.



Sue White

Director of Computing and Library Services, University of
Huddersfield

Sue's remit includes oversight of the Archives and Special Collections and she has been involved in the development of Heritage Quay since its inception. In recent years she has held executive positions in SCONUL and the Northern Collaboration and is a Fellow of the Higher Education Academy (HEA) and the Chartered Institute of Library and Information Professionals (CILIP).



Sarah Wickham

University Archivist & Records Manager, Heritage Quay,
University of Huddersfield

Since 2012 Sarah has been directing the five year and £2 million Heritage Lottery Fund and University-funded project to transform the University's Archives Service which includes the capital development of Heritage Quay. Sarah's team was awarded the Times Higher Leadership & Management Award 2016 for "outstanding Library team". Active in professional and service development in a range of organisations, Sarah was voted the Archives & Records Association Recordkeeper of the Year 2016.



Dr Paul Ayris

Pro Vice-Provost and Director of UCL Library Services,
University College London

Dr Paul Ayris has been Director of UCL Library Services since 1997. He is also the UCL Copyright Officer. Through Paul's commitment to developing learning spaces fit for the 21st century, UCL Library Services is a major part of the Transforming UCL programme, which is creating new digitally-enabled, 24-hr spaces which act as the heart of the student experience for all UCL's students when they are on campus. Following the Cruciform Hub opening, a new UCL Hub opened in Senate House

and the Library will manage an additional 1,000 cutting-edge learning spaces when the UCL Student Centre opens in 2019.

Dr Ayris was the President of the Association of European Research Libraries (LIBER) from 2010 to 2014 and is now Advisor to the LIBER Board. He is Co-Chair of the League of European Research Universities (LERU) Community of Chief Information Officers. He is the Chair of the Jisc Collections Content Strategy Group (JCCSG). On 1 August 2013, Dr Ayris also became Chief Executive of UCL Press. In November 2016, Dr Ayris was made Pro Vice-Provost with special responsibility for implementing Open Science approaches in UCL and for fostering even greater collaborations in building and developing collections inside and outside UCL.



Liz Jolly

Director of Library and Information Services, Teesside University

Liz joined Teesside University in 2008. Previously she was Associate Director (Services and Operations) in Information and Learning Services at the University of Salford. Liz has held departmental senior management positions at East London and London South Bank universities and has also worked at Huddersfield, Leeds Beckett, Lincoln and Manchester Metropolitan universities.

Liz is a Fellow both of CILIP and the Royal Society for the encouragement of Arts, Manufactures and Commerce (RSA). She has been a trustee of CILIP and was Chair of SCONUL from 2014-16. She is currently chair of the Northern Collaboration, a group of twenty-five higher education libraries in the North of England, and a member of the Editorial Board of the New Review of Academic Librarianship and of the British Library Advisory Council.

Liz wrote the chapter 'Space: changing the boundaries' in *Collaboration in Libraries and Learning Environments*, 2013, Facet publishing, edited by Maxine Melling and Margaret Weaver.



Denise Turner

Assistant Director (Learning and Research Support, Customer Services), Teesside University

Denise joined Teesside University in 1999 having previously worked in both public and further education libraries. Her current role is focused on the student experience, working in partnership with students to develop spaces, services and skills to enable and enhance their learning.

Denise is a Chartered Member of CILIP, a CILIP mentor and a Fellow of the HEA. She has co-authored journal articles on information literacy and methods of assessment. Her professional interests include learning spaces, learning development including digital literacy and the use of gamification to enhance learning.

bruynzeel-storage.com
 freephone 0800 220 989



Photo: © Simon Hadley

Better by Design

Storage Solutions for Modern Academic Libraries

At Bruynzeel, we don't just manufacture shelving. Our aim is to create inspiring, custom-designed library storage: intelligent solutions that combine space efficiency with accessibility.

We are proud suppliers to three projects shortlisted for the SCONUL Library Design Awards 2016: Heritage Quay at University of Huddersfield, Teesside University Library and Maynooth University Library.

To find out more about our design-led library systems and to book a free consultation, call **0800 220 989** or visit bruynzeel-storage.com/library



'Bruynzeel worked very closely with me to maximise the space. Their technical input was one of the main reasons we chose them as a supplier.'

Sarah Wickham –
 Archivist and Records Manager, Heritage Quay



Roger FitzGerald

Chairman, ADP Architecture

Roger has responsibility for design quality across the practice as Chair of ADP. He has been closely involved in the design of several award-winning libraries, including the 2013 SCONUL Award-winning Augustine House at Canterbury Christ Church University. He was responsible for The Forum, a unique collaboration between a university, FE college, and local authority, and contributed to the design concepts for the Laidlaw Library. Current work includes a masterplan for the University of Cyprus, which incorporates a new library under construction designed by Jean Nouvel.



Jon Roylance

Higher Education Sector Lead, ADP Architecture

Jon has worked for twenty university clients in the last ten years delivering sector-leading facilities and recently has won the Guardian Newspaper Higher Education 'Facility of the Year'; the Cubo HE student accommodation project of the Year, as well as an S-Lab, a SCONUL award and RIBA awards for HE sector projects. This experience has allowed ADP to develop a knowledge base of Higher Education sector innovation, to understand sector concerns, and to develop new thinking. Jon has supported best practice groups at Leeds, Liverpool, and Durham universities involving setting space, energy, and carbon standards for projects across the campuses. He is proactive in sharing good practice and lessons learned on Higher Education sector projects, chairing CPD events on BREEAM, BIM compliance, 'the campus of the future', innovation in teaching and learning, and campus health and safety matters. Jon has contributed to the Association of University Directors of Estates Higher Education Design Quality Forum, and to S-Lab: Supporting World Class Science, as well as to seminars and publications and to the Education Estates conference. ADP's Laidlaw Library at the University of Leeds won a national RIBA Award in 2016.



Michelle Anderson

University Librarian, University of Hull

Michelle was appointed as Hull's University Librarian in November 2016, having previously been Director of Library Services at Robert Gordon University in Aberdeen since 2009, leading the re-development of library and learning support services there as part of an extensive campus development programme.

Prior to this Michelle worked at the University of Lincoln for ten years, initially as Head of Customer Services and subsequently as Head of Library and Learning Resources, leading significant change in the library service as part of a wider university transformation project. Her career has focused on different library and information services in HE, FE and commercial settings. She studied for her first degree at Manchester Polytechnic, later gaining a MA from Leeds Metropolitan University and a Postgraduate Diploma in Management from the University of York.

Whilst at Robert Gordon, Michelle was on the Board of the Scottish Digital Library Consortium, the North East Scotland Visual Art & Design Festival, and Aberdeen International Youth Festival. She is a member of the SCONUL Leadership Strategy Group, and has previously held positions with the Scottish Consortium of University and Research Libraries (SCURL).



Chris Awre

Head of Information Services, University of Hull

Chris manages the Collections Team (acquisition, processing, digitisation and delivery of the library's resources, both print and digital) and Research Services Team (open access, research data management, bibliometrics) at the University of Hull. He was Interim Librarian for six months following Richard Heseltine's retirement in April 2016.

Prior to working at Hull, Chris worked as a Programme Manager at Jisc and as a systems and reader services librarian at Imperial College. Chris has a professional interest in the management and curation of digital resources through the use of digital repositories and how these can be developed as a digital space to complement our physical libraries, and has worked on and led a number of Jisc projects since 2005 in this area.

Chris was a founding Partner in the international Hydra project in 2008 and continues to sit on its Steering Group. He has most recently been Project Manager on the HHuLOA OA Pathfinder project, working with Huddersfield and Lincoln, and Hull lead for the Research Data Spring project, 'Filling the digital preservation gap', in collaboration with the University of York.



Judith Keene

University Librarian, University of Worcester

After a PhD in Palaeoecology, Judith Keene started her librarianship career at the University of Birmingham and Birmingham City University before moving to the University of Worcester. She has been in her current role since 2012 and is a member of the University Executive. She was involved from the outset in the Hive project and has published and given many talks on the subject. The challenges of running a joint library in partnership with Worcestershire County Council, whilst meeting the developing needs of the University community mean that life is seldom dull. Currently, she is particularly interested in how libraries can demonstrate their impact.

Judith helped revive the West Midlands branch of what was then the Universities, Colleges and Research Libraries group of CILIP and served as Chair for three years. She is now a member of the Executive Board of SCONUL. Outside of work, she is a keen gardener, has been a school governor for over ten years and is a lay minister in the Church of England.



Laura Worsfold

Hive Business Development Manager, The Hive, Worcester

A highly skilled project and business development manager with experience in project and contract management, cultural development, partnership working and operations management, Laura has over 20 years' experience developing, leading and delivering complex projects in the public and private sector. She has a track record of building strong and resilient relationships with both public and private sector partners and in leading flexible teams. Having started her career in the tourism and cultural sector, she is passionate about the role that arts and culture has to play in shaping communities and successfully worked on a range of high profile capital build heritage projects, including Compton Verney Art Gallery (www.comptonverney.org.uk); The Old Fire Station, Oxford, (www.oldfirestation.org.uk) before moving to The Hive in Worcester; (www.thehiveworcester.org) the first partnership university/public combined library and history centre in the country.



Janine Downes

Library Services Manager, The Hive, University of Worcester

Janine manages the delivery of the frontline library service at The Hive, Europe's first fully integrated University and Public Library in Worcester. The Hive is also home to the local Archive & Archaeology Service and Worcestershire County Council's Customer Service Hub. Previously she has managed and delivered excellence in customer service in a range of environments including college, public and university libraries, theatre and heritage.



Cathal McCauley

University Librarian, Maynooth University

Cathal was appointed University Librarian at Maynooth University in September 2008. Between 2002 and 2008 he fulfilled a number of roles at University College Dublin (UCD) Library including Head of Reader Services. Prior to joining UCD Cathal worked for the accountants and management consultants FGS (Farrell Grant Sparks – now part of Grant Thornton) where he held a variety of posts including Director of Consulting. Cathal's interests include library design, strategic collection development, and the harnessing of new technologies and new service models to enhance the library experience for staff and readers.

Cathal oversaw the design and delivery of Maynooth University's €20 million library extension which was officially opened in June 2013. He is a regular speaker and guest lecturer on issues facing libraries including library design, innovation and change management. He is an associate and Council member of the Library Association of Ireland (LAI). He is a member, and former Chair, of the Irish Universities Association Librarians' Group (IUALG) and current chair of the IReL Steering Group. He is currently Treasurer of the Consortium of National and University Libraries in Ireland (CONUL).



St. John Handley

Director, Scott Tallon Walker

St. John is a graduate of the Mackintosh School of Art and Director of Scott Tallon Walker (STW). He has completed a wide range of new-build, refurbishment and conservation projects for universities in the United Kingdom and Ireland, working both with STW and previous employers. Most recently, he has completed a 10,000 m² extension and refurbishment of the John Paul II Library at the National University of Ireland, Maynooth. St. John's particular experience in the design and procurement of specialist façades was further developed on this project, where the striking double-skinned façade enhances energy

efficiency, controls day light penetration to the internal space and facilitates controlled natural ventilation.

The finished library displays a consistency and quality – common to all of St. John's projects - which speak of his rigorous approach to detail design and active engagement on site throughout the construction process. His career to date has also included several high-profile cultural and residential projects. St. John is a member of both the Royal Institute of British Architects and Royal Institute of the Architects of Ireland.



Dr Simon Chaplin

Director of Culture & Society, Wellcome Trust

Simon Chaplin is Director of Culture & Society at the Wellcome Trust, responsible for Wellcome's activity in public engagement, education and humanities and social science research including the Wellcome Library. He was previously Head of the Wellcome Library. He is a board member of Research Libraries UK.



Gabi Code

Associate, WilkinsonEyre Architects

Gabi initially joined WilkinsonEyre in 2000. After working overseas for a number of years' post-qualification, Gabi returned to the practice in 2007 with extensive site experience and varied international experience, including four years based on site in Singapore. Most recently, Gabi ran a complex, cultural refurbishment project in central London for the Wellcome Trust. The works were undertaken whilst the building remained operational and open to the public.

She has also recently successfully gained planning permission for Crown Aspinalls: a casino and new external terrace structure housed in a Grade II-listed Georgian terraced building located within the Mayfair Conservation area.

Promoted to associate in 2014, Gabi has since registered as a qualified project manager with the Association of Project Management, demonstrating she can not only can design and deliver great buildings but she understands how a project can benefit from good communication and efficient project management and processes.



Geoff Shearcroft

Director, AOC Architecture

Geoff Shearcroft is a British architect based in London and co-founder of AOC. Established in 2005 with Tom Coward, the practice is best known for designing public, cultural and educational buildings within historic and politically-sensitive contexts. It has won numerous awards and had its work internationally exhibited, including at the Victoria & Albert Museum, the Royal Academy, the British School of Rome and the Venice Biennale.

Geoff has particular experience in developing spaces that are physically and socially participative. He led the AOC team on the Reading Room, Wellcome Collection, and is currently leading the phased redevelopment of The National Archives. He has taught and lectured at leading schools of architecture in Europe and was visiting professor at Yale School of Architecture (2011), leading a design studio developing publicly accessible repositories for the UK's national collections.



Chris Bunker

Construction Projects Director, Wellcome Trust

Chris was responsible for the coordination of the design and construction teams during the Wellcome Collection development project. A Chartered Surveyor and qualified project manager, he has over 20 years' experience of delivering projects within UK and abroad with a particular specialism of working within the cultural sector.



Zina Sabovic

Head of Collections Management and Operations, Wellcome Library

Zina is responsible for the full cycle of collection management (from acquisition and cataloguing, preservation and conservation, to storage and access) and for public services at the Wellcome Library. Zina was also responsible for the Library redevelopment during the large-scale Wellcome Collection Development project.

List of Delegates

Name	Job title	Institution
Jo Aitkins	Head of Public Services	University of Leicester
Michelle Anderson	University Librarian	University of Hull
James Anthony-Edwards	Deputy Director for Library and Academic Services	University of Wolverhampton
Chris Awre	Head of Information Services	University of Hull
Paul Ayris	Pro Vice-Provost and Director of UCL Library Services	University College London
Christine Backler	Assistant Director	University of Dundee
Pete Barrett	Senior Library Supervisor	University of Bristol
Catherine Bentley	Library Space & Services Manager	Lancaster University
Mike Berrington	Deputy University Librarian	Nottingham Trent University
Simon Bevan	University Librarian	Cranfield University
Peter Brooks	Head of Library Services	Royal Agricultural University
Chris Bunker	Construction Projects Director	Wellcome Trust
Glenn Burgess	Acting Vice-Chancellor	University of Hull
Stephanie Burrell	Customer Experience Manager	University of Plymouth
Ann Byrne	Assistant Librarian	University College Cork
Jeanette Castle	Transformation Manager	University of West of Scotland
Simon Chaplin	Director of Culture & Society	Wellcome Trust
Kate Cheney	Head of Site Library Services	University College London
Alison Chojna	Head of Library and Learning Resources	London South Bank University
Pat Christie	Director of Libraries and Academic Support Services	University of the Arts London
Gabi Code	Associate	WilkinsonEyre Architects
Philip Cohen	Head of Library Services	Dublin Institute of Technology
Samuel Cole	Photographer	Tate
Maeve Cowper	Head of Student Development	University of the West of Scotland
John Cox	University Librarian	National University of Ireland Galway

Name	Job title	Institution
Julia Crompton	Marketing and Publications Manager	University of Kent
Anna Di Iorio	Librarian, UCL Cruciform Hub	University College London
Kenneth Dick	Associate University Librarian	University of Portsmouth
Lorna Dodd	Senior Librarian, Learning, Research and Information Services	Maynooth University
Janine Downes	Library Services Manager	University of Worcester
Andy Duck	Head of Marketing and Communication	Bruynzeel Storage Systems Ltd
Katherine Everest	Head of Library Services and Operations	Leeds Beckett University
Michael Fake	Head of Learning and Customer Services	University of Leeds
Helen Fallon	Deputy University Librarian	Maynooth University
Roger FitzGerald	Chairman	ADP Architecture
Clare French	Assistant Director, Information and User Services	University of Essex
Julia Garthwaite	Deputy Site Librarian, UCL Cruciform Hub	University College London
Rachel Geeson	Service Development Manager, Library and Learning Support	Bournemouth University
Tracy Goodwin	Commercial Manager	Rackline
Roisin Gwyer	University Librarian	University of Portsmouth
Louise Hammond	Librarian	University of Buckingham
St. John Handley	Director	Scott Tallon Walker
Tom Hulks	Area Sales Manager	Rackline
Mark Illingworth	Facilities Librarian	University of Southampton
Simon Jackson	Director of Library and Information Services	Royal Veterinary College
Ruth Jenkins	University Librarian	Manchester Metropolitan University
Liz Jolly	Director of Library and Information Services	Teesside University

Name	Job title	Institution
Simon Jones	Storage and Access Services Manager	Wellcome Trust
Sarah Kafala	Library Assistant	University of Essex
Allison Kavanagh	College Librarian	Dublin Institute of Technology
Judith Keene	University Librarian	University of Worcester
Kate Kelly	Director Library Services	Royal College of Surgeons in Ireland
Nicky Kershaw	University Librarian	Anglia Ruskin University
Froniga Lambert	Associate Director	King's College London
Karen Latimer	Chair, Designing Libraries Advisory Board	Queen's University Belfast
Sandra Leitch	Co-director Library and Learning Services	Kingston University
Annette Linton	Head of Library Content and Scholarly Communications	Swansea University
Alison Little	Associate Director Learning Strategy and Student Engagement	University of Sheffield
Anne Llewellyn	Principal Lecturer, Learning and Teaching	Teesside University
Amy Lloyd	Deputy Director, Services	SCONUL
Elizabeth Malone	Co-director Library and Learning Services	Kingston University
Jackie Marfleet	Librarian	Senate House Library, University of London
Alexi Marmot	Professor of Facility and Environment Management	UCL Bartlett Faculty of the Built Environment
Sarah Maule	Head of Learning Resources	Ravensbourne
Cathal McCauley	University Librarian	Maynooth University
Lisa McFarlane	Operations Manager (Collections)	University of Hull
Grace McGlynn	Administrative Assistant	University College Cork
Kathryn McGowan	Contract Director	Reassurance Security Services Ltd
Benjamin Meunier	Assistant Director, Public Services, UCL Library Services	University College London
Maria Mirza	Assistant Head of Learning Services	Edge Hill University

SCONUL Library Design Awards and Showcase 2016

Name	Job title	Institution
Julia Munro	Head University Library & Collections Services	University of Reading
Hugh Murphy	Senior Librarian, Collection Management Services	Maynooth University
SitMui Ng	SCONUL Co-ordinator	SCONUL
Julia Nurse	Web Content Officer	Wellcome Trust
Gobnait O'Riordan	Director, Library & Information Services	University of Limerick
Chris Paget	Director of Estates	University of Hull
Roddy Paul	Architect	University of Dundee
Bev Peters	Access and Further Support Librarian	Teesside University
Janet Peters	Director of Library Services and University Librarian	Cardiff University
Wendy Pirie	Head of Academic and Learner Services	Heriot-Watt University
Lesley Pitman	Librarian, UCL SSEES Library	University College London
Chris Powis	Head of Library and Learning Services	University of Northampton
Steve Rose	Deputy Director of Information Services	Birmingham City University
Ann Rossiter	Executive Director	SCONUL
Anne Rowlands	Head of Library Services	Regents University London
Jo Rowley	Head of Learning Services	Queen Margaret University
Jon Roylance	Higher Education Sector Lead	ADP Architecture
Alex Rushbrooke	Head of Business Development	Harrow Green
Zina Sabovic	Head of Collections Management and Operations	Wellcome Library
Elaine Salter	Library Services Manager	University of Westminster
Nick Scott	Architect	Sheppard Robson
Geoff Shearcroft	Director	AOC Architecture
Kathryn Smith	Associate Librarian, Library Services Delivery	Royal College of Surgeons in Ireland
Robert Sober	Teaching Fellow	Teesside University
John Sotillo	Director, Information Services	University of Kent

Name	Job title	Institution
Catherine Stephen	Client Services & Academic Engagement Manager	University of Surrey
Georgia Stroud	Administrator	SCONUL
David Summers	Deputy Director of Library Services	Lancaster University
David Taylor	Business Developer	Harrow Green
Ruth Thornton	Collections Lead	Cardiff University
Richard Tong	Sales Manager	Bruynzeel Storage Systems Ltd
Mark Toole	Head of Libraries and Learning Resources	Nottingham Trent University
John Tuck	Director of Library Services	Royal Holloway, University of London
Denise Turner	Assistant Director (Learning and Research Support, Customer Services)	Teesside University
Michelle Wake	Librarian, UCL School of Pharmacy and Site Libraries Manager	University College London
Liz Waller	Deputy Director Information Services and Head of Library & Archives	University of York
Sue White	Director of Computing and Library Services	University of Huddersfield
Mary Whittaker	Space & Safety Manager	King's College London
Shekufeh Whittaker	Issue Desk Head, UCL Cruciform Hub	University College London
Sarah Wickham	University Archivist & Records Manager	University of Huddersfield
Julian Wood	Library Assistant	University of Bristol
Jay Woodhouse	Facilities and Projects Manager, UCL Library Services	University College London
Laura Worsfold	Hive Business Development Manager	The Hive, Worcester
Ann Wrigley	College Librarian	Dublin Institute of Technology
Aquil Zahid	Public Service Team Leader	Queen Mary, University of London

The SCONUL Library Design Awards

About the Awards

There are many awards for buildings made by architecture and building organisations. The SCONUL award is distinctive in that it is made by a library body in recognition of newly-designed spaces which function effectively, meeting the needs of users and library staff and the demanding requirements of a modern learning and research environment. The award identifies and celebrates examples of best practice in the period 2012 to 2015.

The awards have been made every three years since 1973 and recognise the best in the design of HE academic libraries. Previous award winners include Augustine House Library and Student Services Centre at Canterbury Christ Church University, the McClay Library at Queens University Belfast and the Ayr Library at University of the West of Scotland and Scotland's Rural College.

All of the shortlisted libraries stood out in a highly competitive field by demonstrating sophisticated and valid responses to their institutions' strategic priorities. The winning libraries showed thoughtful concern for the needs of individual users, evidenced by the enthusiastic responses of students and academics talking about their experiences of using the new spaces. The continued success of the SCONUL Design Awards programme is just one indication of the continuing value and importance of world class and innovative academic library spaces and programmes for the continuing health of Higher Education Institutions in the UK.

Judging was carried out by the SCONUL Design Awards Panel and was based on the following criteria:

Strategic alignment

- How does the development contribute to the strategy for the institution?
- How does it help to articulate the vision for development of the library service?

Design

- How have the stakeholders and users contributed to the development?
- How does the design meet the objectives of the development?
- How has the design enabled innovation, or the potential to enable innovation for the institution or the wider sector?

Transformation

- How has the design facilitated service redesign and innovation for the institution or the wider sector?
- How will the design enable future flexibility and adaptability?
- How does the development support its stakeholders and users in achieving their objectives and those anticipated in the future?

The shortlisted libraries

SCONUL is pleased to announce that the shortlisted libraries of the 2016 awards are:

Development over 2000 sq. metres

- Brynmor Jones Library, University of Hull
- John Paul II Library, Maynooth University
- Wellcome Library and Reading Room, Wellcome Collection
- The Hive, University of Worcester

Development under 2000 sq. metres

- Heritage Quay, University of Huddersfield
- Teesside University Library, Teesside University
- Cruciform Hub, University College London

We would like to thank the SCONUL Design Awards Panel:

- Liz Waller, Deputy Director Information, University of York
- Leo Appleton, Associate Director, Service Management, University of the Arts London
- Chris Powis, Head of Library and Learning Services, University of Northampton

Judging Panel:

- Mike Berrington, Deputy University Librarian, Nottingham Trent University
- Janice Conway, Director of Library and Student Services, University for the Creative Arts
- Lesley Pitman, Librarian, UCL SSEES Library
- Jo Rowley, Head of Learning Services, Queen Margaret University
- Ian Snowley, University Librarian, University of Lincoln
- Ruth Thornton, Trevithick Librarian and Subject Librarian, Cardiff University

Brynmor Jones Library, University of Hull

Background

The Brynmor Jones Library is the sole library on the University of Hull's main campus. Prior to its redevelopment it consisted of two linked buildings; the original, three storey 1959 building which was the University's first purpose-built library, and an eight storey tower extension which opened in 1970. By 2010 the Library was looking tired, outdated and technologically impoverished. Serious thinking about the redevelopment of the Brynmor Jones Library began that year. Sheppard Robson were appointed as architects for the project in the summer of 2011, working with Arup as structural engineers and Gleeds as cost consultants. After an intense period of consultation, design and planning, preliminary building work began in September 2012, with BAM as the main contractor. The Library was kept open throughout the work, and re-developed areas of the building were made available as soon as they were ready, the first of these being opened in September 2013. The project was completed, at a cost of £28 million, by the end of 2014.



Strategic alignment and delivery

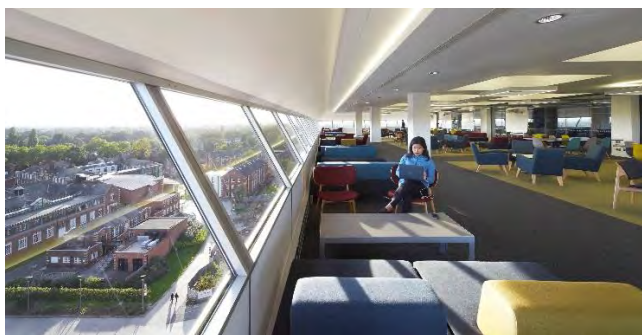
The redevelopment of the Library was highly emblematic of the more aspirational positioning of the University that had been articulated in its 2011-15 Strategic Plan: at the time it constituted the largest single capital investment ever made by the University. It was an explicit, early statement about the readiness of the University to invest heavily in the future, about its specific desire to enhance its stature through the creation of world-class facilities, and about its determination to compete through quality and innovation. Today the Library stands at the very centre of the campus and is informing and guiding how the University develops its academic buildings, using the Library as a fulcrum around which the campus moves and lives. The University Annual Report for 2014/15 noted that *"the newly refurbished Brynmor Jones Library has totally transformed the heart of the campus and is an unmistakable sign of our confidence in the future."*

The vision of the Library is very simple: to be at the heart of the success of the University. The Library's mission statement is similarly expressed in terms of enhancing the stature, reputation and performance of



Photos: All rights reserved The University of Hull, 2015

the University as a whole. In every detail the building reflects this, speaking of quality; seriousness of academic purpose; the place of students at the heart of everything we do; learning in a research context; respect for heritage; and community openness. The redevelopment has clearly addressed the strategic focus on the student experience by transforming the learning environment provided by the Library. Alongside this the redevelopment has reinforced the strategic desire to position the University as an anchor institution in its local communities by making the Library a key cultural gateway into the University, an aspiration that has been realised through the incorporation into the Library of a new art gallery and adjoining exhibition hall, which will be integral places within the City of Culture 2017 programme.



Partnership, feedback and impact

Working alongside the Library, Hull University Union (HUU) led an imaginative and hugely influential campaign for investment in the building. The decision to invest in the redevelopment might not have been taken without the passionate advocacy of students who showed how much they cared about the Library and convinced any who doubted it of the centrality of the Library to their lives and

their learning. Planning the work involved all constituents of the University to ensure it became a building for the whole University.

Reaction to the redevelopment from every section of the University community and beyond has been overwhelmingly positive. The NSS in 2016 saw satisfaction with the Library on the Hull campus rise from 79% in 2014 to 91% in 2015 and 92% in 2016. The Library is now home to all University open days and applicant days, and the café is one of the main social spaces on campus, as well as a popular location for meetings.

Perhaps the best testimony to the success of the design of the building has been the reaction of students whenever new areas were first opened. Within minutes students would populate these areas, effortlessly begin to make use of the facilities, and give the appearance of having been doing so for years. Whenever that happened, it was clear that the design was right. What is also very noticeable is the change in atmosphere. In the undeveloped building, poor behaviour was common and there was often conflict between users who wanted to work in different ways. Now the Library is calm, even when very busy, and exceptionally purposeful. The Library that began life in 1929 in a series of inadequate rooms in one of the original buildings of the University now stands at the heart of the campus as a proud symbol of the University's growing stature and reputation, and as an unmistakable symbol for the future.

Richard Heseltine
 Chair of the James Reckitt Library Trust and
 Immediate Past University Librarian and
Chris Awre
 Head of Information Services

Design and suppliers:

Architect/Interior Design: **Sheppard Robson**

(Architects, interior designer, furniture fittings and equipment consultant, wayfinding designer, contract administrator, lead consultant)

City Tower
Piccadilly Plaza
Manchester M1 4BT
T: 0161 233 8900
www.sheppardrobson.com
Contact: Alex Solk
alex.solk@SheppardRobson.com

Library movers: **Harrow Green**

Unit 22 Millshaw Industrial Estate
Millshaw Park Lane
Leeds
Yorkshire LS11 0HF
T: 0113 272 6460
www.harrowgreen.com
Contact: Karl Crompton
Karl.Crompton@harrowgreen.com

Library shelving: **Ecospace**

(Library shelving including specialist shelving to the gallery store for artwork, as well as archive storage and roller racking)

Masons Gate
Townsend
Marsh Gibbon, Bicester
Oxon OX27 0EY
T: 01869 278002
www.ecospace.co.uk
Contact: Richard Ryan
r.ryan@ecospace.co.uk

Furniture supplier: **Ralph Capper Interiors Ltd**

(Furniture suppliers working with the architects and the clients to provide samples for user testing and review through to supply and install)

10a Little Peter Street
Manchester M15 4PS
T: 0161 236 6929
www.ralphcapper.com
Contact: Lisa Grey
lisa@ralphcapper.com

Counter suppliers: 3G Joinery

(Bespoke joinery and counters)

Unit 7 Riverside Place

Bridgewater Road

Leeds LS9 0RQ

T: 0113 2009130

www.3gjoineryandshopfitting.co.uk

Contact: Gary Williams

3gjoinery@btconnect.com

Partition supplier: Komfort

(Glazed partitions)

Building 3, City West Business Park

Gelderd Road

Leeds LS12 6LN

T: 0113 3956565

www.komfort.com

Contact: David Gravil

David.Gravil@komfort.co.uk

Carpet supplier: Desso

Taxandriaweg 15

5142 PA Waalwijk

The Netherlands

T: +31 (0)416 684 100

www.desso.com

Contact: Michelle Metcalf

MMetcalf@desso.com

Library System: 3M (now Bibliotheca in the UK)

(Supply of Self Check equipment)

Landmark House

Station Road

Cheadle Hulme

Stockport SK8 7BS

T: 0161 498 1140

www.bibliotheca.com

Contact: Darren Ratcliffe

info@bibliotheca.com

John Paul II Library, Maynooth University



Initial conceptual planning for the new library at Maynooth University commenced in the 1990s but the building did not open until June 2013. During the intervening period libraries evolved dramatically and expectations of the impact of the new library increased year-on-year. A major challenge for the project was to meet these expectations which were accentuated by the fact that the final project, requiring more than €20 (US\$22) million of public funding was delivered during the worst recession in living memory when all public expenditure was being questioned and subjected to unprecedented scrutiny. Through broad consultation, extensive site visits and detailed design, the library met these challenges and exceeded these very high expectations. The Library is very grateful to all who contributed to the success of the project particularly colleagues nationally and internationally who opened their doors, and their hearts, during the planning visits.

The key messages consistently received during our consultation and planning processes were that users wanted an environmentally friendly building, more seats, more sockets and a “wow” factor. The building delivers all of this and more. In addition to helping to establish needs, the above process also enabled the Library to ensure that users and stakeholders were well informed during the project. The Library was sensitive to the fact that students graduating by 2012 would experience the considerable disruption involved but may not reap the rewards arising. To manage this concern the impact on current students was minimised through programming that ensured that the most disruptive work was carried out during less busy times. During a programme that contained major works, and involved the removal of the facade of the existing building, the Library closed for one day – a Saturday – due to regulations relating to the weight of concrete being moved that day.



In addition to catering for a diverse range of learning styles from the silent and individual to the social and collaborative the new library also fulfils a range of functions on campus, and within the wider community, including exhibition venue, gallery, civic space, maker space, performance space and even temporary scientific laboratory. Key benefits of the project include a 216% increase in seating capacity to almost 1,500, a more than 130% increase in stock capacity and a 280% increase in IT provision.



The positive impact of the project is evident and substantial. LibQual data from before the project (2010) and after the project (2015) records a dramatic swing in relation to the *library as place* variable from one which had a disproportionately negative impact to one which had a

disproportionately positive impact. Usage and football continues to increase steadily (up 14% from 2015 to 2016). While such measures bear testament to its popularity metrics alone do not adequately reflect the impact of the new library which has repositioned the Library as an organisational unit within the university and has changed the campus, and wider community's perception of the Library. To, in part, underpin the success of the new building the Library introduced a new organisational structure in parallel to the construction project. The Library is now the venue of choice for a range of academic and other university activities. High profile guests and events are now the norm and the University uses the image of the library for a diverse range of purposes from the staff ID card image through to the backdrop for live news broadcasts. In short the new building has had a transformative impact on both the user experience and on the Library itself as an organisational unit. This achievement was formally recorded, and succinctly summarised, when the 2015 Peer Review Group Quality Assessment report on the Library as a unit declared the building "a resounding success".

Cathal McCauley
University Librarian, Maynooth University

Design and suppliers:

Architect/Interior Design: **Scott Tallon Walker Architects**

19 Merrion Square
Dublin 2
T: +353 (0)1 6693000
<http://www.stwarchitects.com>
Contact: St. John Handley
St_John.Handley@stwarchitects.com

Project coordinator: **St. John Handley, Scott Tallon Walker Architects**

19 Merrion Square
Dublin 2
T: 353 (0)1 6693000
<http://www.stwarchitects.com>
Contact: St. John Handley
St_John.Handley@stwarchitects.com

Library movers: **Careline Moving and Storage**

Unit 514 Grants Avenue
Greenogue Business Park
Rathcoole
Co Dublin
T: +353 (0)1 2572350
<http://www.careline.ie>
Contact: Keith Corrigan
dublin@careline.ie

Library shelving: **Storage systems Ltd**

Malahide Road Ind. Park
Coolock
Dublin 17
T: +353 1 8711400
<http://www.storagesystems.ie>
Contact: Niall Rock
sales@storagesystems.ie

Furniture supplier: **Matrix Furniture Ltd**

Unit 1e Broomhill Business Complex
Broomhill Road
Tallaght
Dublin 24
Tel: +353 1 4635371
<http://matrixfurniture.ie/>
Contact: Joe Duggan
sales@matrixfurniture.ie

Partition supplier: MJ Flood Interiors

(Glazed Partitions)
Baldoonnell Business Park
Baldoonnell
Dublin 22
T: +353 1 466 3500
<http://interiors.mjflood.ie>
furniture@mjflood.ie

Carpet supplier: Interface Carpets

Shelf Mills
Shelf
Halifax
West Yorkshire HX3 7PA
T: 01274 690 690
<http://www.interface.com/EU/en-GB/homepage>

Library systems: Tripwire systems

1 Grenfell Road
Maidenhead
Berkshire SL6 1HN
T: 016 2877 5850
<https://www.tripwire.com/>
emea_sales@tripwire.com

Library systems: Doorware.ie

Unit 43, Glenrock Business Campus.
Ballybane
Galway
T: + 353 9 174 3100
<http://doorware.ie>
Contact: Kieran Gorey
info@doorware.ie

Wellcome Library and Reading Room, Wellcome Collection



Wellcome Library has existed as a research library at 183 Euston Road since opening to the public in 1949. Over the years it has seen several refurbishments, different in scale and nature. In 2007 new galleries, public spaces, bookshop and café opened in the same venue, with different activities increasingly converging and attracting an ever growing audience. Building on those successes and to ensure that we can achieve our mission in the future, from 2012 to 2015 we worked with Wilkinson Eyre Architects on a major renovation project to achieve our ambition to open up the building, increase its overall capacity and flexibility, improve the flow of visitors through the building, and completely redesign the Library. Our key aim was to create an environment where we can produce a fresh, rich and coherent offer, ensuring excellent and inspiring experience for our visitors irrespective of the purpose of their visit.

As a result, the Library has been transformed into an inviting and multi-functional space better suited to the needs of our users. It now boasts an attractive and spacious entrance, more intuitive layout and presentation of the collections, new DDA facilities including an internal lift, clear signage, different noise zones, clearly defined spaces, and a comfortable environment that supports silent study and research on the one hand and discussion and group work on the other. At the same time, we have improved the range and quality of services and facilities for our efficiencies. The new Library design has paid a lot of attention to colour and materiality of the interiors, and has integrated displays of art works from our rich collection throughout the space. Together, these elements create an inspiring ambiance that is conducive to different styles of working, and that supports the Library's wide appeal and diverse audiences that range from academics and experts, to students and private researchers, to the curious public.



In addition, the Reading Room, previously part of the Library, was converted from a place for silent study into a showpiece space that bridges the gap between Wellcome Collection's rich events and exhibitions programme and the world class Library. It can be described as a modern day reworking of the Enlightenment library, an ambitious, dynamic space of open ended public study, where the wealth of the Library's holdings and other collections are laid bare for enjoyment, scrutiny and open debate. Here, we have opened up the wonders of the Library to non-specialists to enjoy, and extended an invitation for them to come to the Library and delve in deeper to discover more. Taking inspiration from the warm, informal tone of the room, visitors may chance upon an expert-led pop-up event or a handling session with objects from our collection, take part in a seemingly impromptu creative workshop, or enjoy parts of a day-long drop-in performance or seminar. It is like an open cabinet of wonders, layered, rich and historical, and it deliberately blends the traditions of museums and galleries (looking, talking and sharing) and libraries (reading, writing, thinking and creating). The mezzanine area above the Reading Room remains part of the Library, functionally and visually, offering a relaxed space that absorbs the conversations below while also encouraging its own conversations, or just giving our users somewhere to pause and recharge.

The environment we have created reflects the idea of Wellcome Collection as a

continuum of spaces and experiences connected but not identical. It has also enabled us to enrich our offer, transform the way we work, and further promote engagement with the Library's collections. We are now offering new activities including seminars, teaching classes, staff-led and public-led engagement programmes, in addition to the services and experience expected of a leading, modern research library. In this environment we are able to reach new audiences, dismantle some of the traditional sector and functional boundaries, and shape new user expectations.



Photos: Wellcome

With many libraries and museums looking to attract new audiences and engage with their collections in new ways, we have been seen as an exciting and innovative model. The response from our visitors and peers so far has invariably been a mix of enthusiasm, excitement and inspiration.

Zina Sabovic
 Head of Collections Management
 and Operations, Wellcome Library

Design and suppliers:

Architect: **Wilkinson Eyre Architects**

WilkinsonEyre
33 Bowling Green Lane
London EC1R 0BJ
T: 020 7608 7900
<http://www.wilkinsoneyre.com>
Contact: Gabi Code
g.code@wilkinsoneyre.com

Architect: **AOC Architect**

(Architect Reading Room)
49 Columbia Road
London E2 7RG
T: 020 7739 9950
<http://www.theaoc.co.uk/>
Contact: Geoff Shearcroft
geoff.shearcroft@theaoc.co.uk

Main contractor: **Overbury plc**

77 Newman Street
London W1T 3EW
T: 020 7307 9000
<http://www.overbury.com/>
Contact: Mark Chain
mark.chain@overbury.com

Cost consultant: **Turner and Townsend**

One New Change
London EC4M 9AF
T: 020 7544 4000
<http://www.turnerandtowntsend.com/>
Contact: Colin Wood
colin.wood@turntown.com

Structural engineer: **AKTII**

100 St John Street
London EC1M 4EH
T: 020 7250 7777
<http://www.akt-uk.com/>
Contact: Gary Lynch
gary.lynch@akt-uk.com

Building services engineer: Max Fordham

42-43 Gloucester Crescent
London NW1 7PE
T: 020 7267 5161
www.maxfordham.com
Contact: Colin Darlington
c.darlington@maxfordham.com

Wayfinding and signage design: Holmes Wood

Studio 27
38 Burns Road
London SW11 5GY
T: 020 7326 9970
<http://www.holmes-wood.com>
Contact: Alex Wood
alexandra@holmes-wood.com

Signage contractor: Rivermeade Signs

Roslin Road
London W3 8BW
T: 020 8896 6900
<http://www.rivermeade.com>
Contact: Mark Harrison
mark_harrison@rivermeade.com

Access consultant: Earnscliffe Davies Associates

64 Havelock Road
Brighton BN1 6GF
T: 01273 502934
<http://earnsccliffe.associates>
Contact: Jayne Earnscliffe
jayne@earnsccliffe.co.uk

AV consultant: Emergent AV

Church Road Studios
Teddington TW11 8PB
T: 020 3730 3734
<http://www.emergentav.co.uk/>
Contact: Christian Bozeat
cb@emergentav.co.uk

Library movers: Premier Moves

Premier House
1 Ardra Road
London N9 0BD
T: 020 8976 2100
<http://www.premiermoves.net/>
Contact: Danny Rutter
DannyRutter@Premiermoves.co.uk

Furniture supplier: Coexistence

288 Upper Street
London N1 2TZ
T: 020 7354 8817
coexistence.co.uk
Contact: Mary Wiggin
mary@coexistence.co.uk

Counter suppliers: Howard Brothers Joinery

(Reception desk/joinery)
Station Approach
Battle
East Sussex TN33 0DE
T: 0 1424 773272
<http://www.howard-bros-joinery.com>
Contact: Tim Hedges
thedges@howardbros.com

Carpet supplier: Forbo Flooring UK Limited

High Holborn Road
Ripley DE5 3NT
Tel: 01773 744 121
<http://www.forbo.com/flooring/en-uk/>
Contact: Fiona Craddock
fiona.craddock@forbo.com

Timber flooring: Loughton Contracts plc

Unit 135 Cannon Drive
Cannon Workshops
Hertsmere Road
London E14 4AS
Tel: 020 8508 9394
<http://www.loughtoncontracts.com>
Contact: Paul Smyth
info@loughtoncontracts.com

Library systems: Telepen

Arden Grove
Harpenden
Herts AL5 4SL
T: 01582 769991
<http://telepen.co.uk>
Contact: Kevin Sontag
k.sontag@telepen.co.uk

01782 770 144
WWW.RACKLINE.COM



LIBRARY STORAGE SPECIALISTS

MAKING SPACE WORK FOR YOU



Whatever your budget, Rackline will design a storage system specifically for your requirements.

We manufacture a range of products for the modern library environment - static shelving with a range of accessories, manual mobile shelving and two powered mobile products.

We have a team of designers covering the UK, who will attend site, provide storage audits, design space plans and provide detailed quotations for any current project or future plans.

Call us today on **01782 770144** for a no-obligation quotation.



Rackline Limited, Oaktree Lane, Talke, Newcastle-Under-Lyme, Staffordshire ST7 1RX
T: 01782 777666 E: now@rackline.co.uk www.rackline.com



The Hive, University of Worcester

The Hive is an inspirational joint partnership between the University of Worcester (UW) and Worcester County Council (WCC), which opened on 2nd July 2012. It was built as a PFI (Private Finance Initiative) and has approximately 10,000 m² of public space, 800 study spaces and 250 PCs over five floors. As well as being the University library, it contains the city's main public library, Worcestershire Archive and Archaeology Service and a Council Contact Centre. It exemplifies the University's commitment to deliver outstanding public benefit, and to maximise opportunities to impact positively on its community.

The building lies between the University's City Campus and Worcester city centre, providing a physical and metaphorical link between the University and its local community. The building's form and its unique structure draw inspiration from the kilns of the historic Royal Worcester works and the undulating ridge of the nearby Malvern Hills. The colours used inside reflect those used in Royal Worcester porcelain.



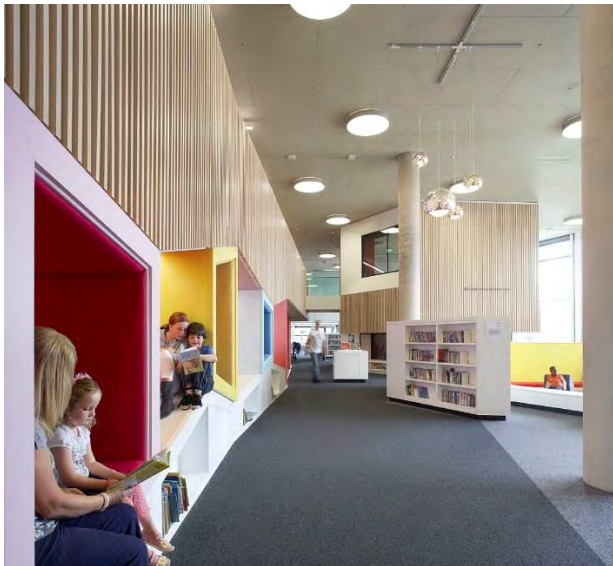
A range of innovative features allowed The Hive to achieve an 'A' rating from the EPC and an award of Outstanding by BREEAM. Modelling developed by the architects led to 250 tonnes of steel in the roof being replaced with laminated timber, saving 2,000 tonnes of CO².

The building is cooled using water from the nearby River Severn, and a biomass boiler uses locally sourced woodchip to generate heat.

Designing The Hive

Extensive consultation with many stakeholders at the start of the project led to the development of an extremely detailed design brief, underpinned by 10 core values. These remain at the heart of The Hive's ethos and its services:

- Inspiration
- Aspiration
- Integration
- Enduring Values
- Sustainability
- Connection
- Learning
- Inclusivity
- Well-being
- Visibility.



The design of the building, which includes large open flexible spaces as well as a small studio theatre and meeting rooms provides a wonderful learning environment for university members, while also serving as a tool for outreach to diverse audiences who may otherwise have felt excluded from university environments. It gives opportunities to deliver the Library service vision in ways that would be difficult or impossible in conventional university libraries. For instance, our 'Study Happy' campaign includes wellbeing and study advice for our students similar to initiatives

at other Universities, but also targets the considerable number of local sixth form and college students who increasingly use the facilities for revision.

All areas, stock and services are open to everyone, facilitated by an integrated front of house team which draws on staff from both organisations who bring their own skills to the benefit of all users. However, the flexible design exploits the fact that peak demand for the different user groups varies throughout the year. For instance, the studio theatre, foyer and meeting rooms can be used for student and staff induction in the early part of the academic year, dedicated quiet study space at assignment time, for exhibitions of student work in the early part of the summer, and for children's activities in the holidays.

The first four years

The Hive has caught the imagination of many, being shortlisted or winning over 27 national awards, including the 2013 Guardian University Award for Contribution to the Local Community. Over three million people have visited, including many who attend the diverse range of events. It is proving particularly attractive to young people including a number of young people not in education, employment and training, giving a place to engage with this difficult to reach group. The opportunities to inspire the next generation of potential university students are therefore huge. Over 4000 young people came on class visits last year (some brought by recent Initial Teacher Training graduates enthused by the facilities) and were introduced to a university library environment, including Information Literacy training and ongoing access to the walk-in e-resources.



Students and University staff demonstrate great pride in The Hive, and the NSS library score has risen by 12% since 2012. Ongoing work, especially with students, continues to inform services and building alike. For instance, recent consultation on how to further develop the Lower Ground floor has opened intriguing possibilities for work around employability and skills – for students, businesses and community users alike.

The initial objective of providing a superb facility to support both university users and impact on the community has been exceeded, as shown by the high satisfaction levels, usage, and vibrant cultural offer. We believe we have created a bold and innovative response to the question of what a library should be in the digital age.

Judith Keene
University Librarian,
University of Worcester

Design and suppliers:

Architect/Interior Design: **Fielden Clegg Bradley**

Bath Brewery
Toll Bridge Road
Bath BA1 7DE
T: 1225 852 545
fcbstudios.com
Contact: Andy Couling
andy.couling@fcbstudios.com

Project coordinator: **Iain Paul, Strategic Design Manager**

(In-house appointment)
Iain has now retired but is still contactable via The Hive Business Development Manager

Library movers: **Premier Moves**

(arranged as part of the PFI contract)
Premier House
1 Ardra Road
London N9 0BD
T: 020 8976 2100
<http://www.premiermoves.net/>
Contact: Neil Drewett

Library shelving: **Demco Interiors**

Shipton Way
Express Park
Northampton Road
Rushden NN10 6GL
T: 01992 454 600
<http://demcointeriors.co.uk/>
Contact: Michaela Lancaster (Head of Design & Products)
m.lancaster@demcointeriors.co.uk

Furniture supplier: **Demco Interiors**

Shipton Way
Express Park
Northampton Road
Rushden NN10 6GL
T: 01992 454 600
<http://demcointeriors.co.uk/>
Contact: Sam Morgan (Senior Projects Co-ordinator)
s.morgan@demcointeriors.co.uk

Counter, partition and carpet supplier: **Mercado**

Thornes Farm Way
Thornes Farm Business Park
Leeds LS9 0AN
T: 0113 380 2800
Mercado.co.uk

Library systems: Bibliotheca

(Self issue and returns units)

Landmark House
Station Road
Cheadle Hulme
Stockport SK8 7BS
T: 0161 498 1140

www.bibliotheca.com/3/index.php/en-uk/

Contact: Simon Peacock (Account Manager - Libraries & Consumables)
s.peacock@bibliotheca.com

Library systems: Vocera

(Internal communications. Vocera provide lightweight, hands free communication devices that work across the Wi-Fi network. They allow us to call or locate individuals or groups by name or function and are invaluable to our front of house staff)

100 Longwater Avenue
Green Park
Reading RG2 6GP
T: 0118 909 0558
M: 07912 314327

www.vocera.com

Contact: Adam Young (Account Manager)
ayoung@vocera.com

Security

We provide experienced, customer focussed staff who deliver more than just security.

- Weekend / late hours providing additional back up to library staff
- Access control
- Library patrols
- Lock down
- 24/7 cover during exam revision periods
- Flexible cover required – 7 hours + – only pay for the hours you need to cover
- Customer Service – book collection, book shelving, photocopier, self-service machine maintenance, general student assistance
- We can provide staff to integrate with in-house library staff to provide reliable back up on a long term basis helping to cover vacation and sickness cover

Your flexible partner for library cover



 **Reassurance
Security Services**

Best of both worlds



 **Reassurance
Resource Management**

Library Assistants

Looking for high quality, customer focused evening library staff?

We provide a reliable out of hours service, with staff managing front-line services and administrative duties.

We can provide high calibre, dedicated and enthusiastic staff who will be fully trained to provide the following services;

- Emptying self-service returns sorter bins/ trolleys and re-sensitizing stock
- Emptying trolleys and shelving/ moving stock
- Assist with directional and initial information enquiries, including assistance with the Online Public Access Catalogue (OPAC) and helping them to find books
- Assist users with the use of copiers and printers and restock paper trays
- Reporting faults
- Keeping the Library space in good order through regular tidying, clearing rubbish, shelving and filing
- Gather and record basic statistics such as head counts

0845 372 1995

*Kathryn@reassurancesecurityservices.co.uk
www.reassurancesecurityservices.co.uk*

Heritage Quay, University of Huddersfield

Heritage Quay is the University of Huddersfield's official archive and opened in October 2014. It is unique amongst archives internationally in any sector especially in its use of interactive and immersive technology to animate and preserve the heritage collections. Its wide-ranging events and outreach to a wide community across Yorkshire and further afield is a distinctive programme in the UK HE sector. Heritage Quay won the Guardian Higher Education Award 2016 for "buildings that inspire" and the team were awarded the Times Higher Education Leadership and Management Award 2016 for "outstanding library team".

Heritage Quay is home to internationally important collections owned both by the University and other partners. These cover eight principal themes including music, the arts, sport and education. The collections comprise approximately half a million items in formats from photographs to cine reels to medals to diaries to textiles, dating from the sixteenth century to the present.

The 630 m² facility was delivered as the capital element of a wider £2 million project running from 2012 to 2017, 80% funded by the Heritage Lottery Fund and 20% by the University. Construction work began in January 2014 and Heritage Quay was officially opened in October 2014.

Extensive consultation with stakeholders including potential audiences and partners was undertaken to inform the facilities offered and the design. This process began with the heritage collections, identifying thematic communities of interest (rather than locality-based), exploring potential use and activities to develop them. Whilst the University's academics and students were consulted, the majority of users come from outside campus and extensive consultation was undertaken off campus. An Activity Plan for 2013 - 2017 and an Interpretation Strategy were then developed; these underpinned the Design Brief and Multimedia Strategy.

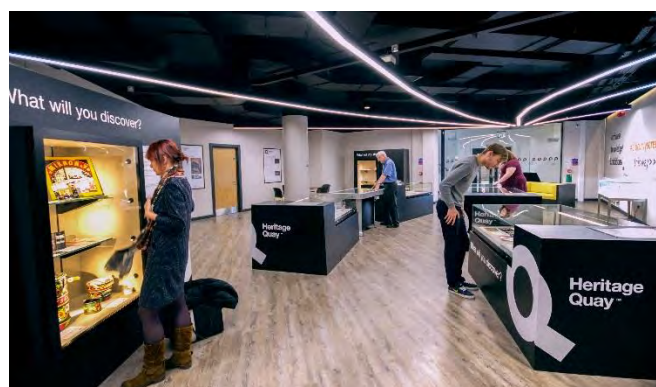


Photo: University of Huddersfield

Space in the Schwann Building, the principal building on campus, was refurbished to provide new visitor and researcher accommodation, and state-of-the-art collections storage.

Heritage Quay is reached from the Schwann Building Atrium; adjacent student-focused facilities include the Library, 24/7 computing rooms and Student Central (catering, sports, and Students' Union). Heritage Quay and its adjacent circulation spaces are distinctly branded through their finishes and signage.



Photo: Simon Hadley

One enters directly into the "Exploration Space" (230.5 m²), a multi-functional public space with high-quality showcases presenting themed and changing exhibitions drawn from the collections, as well as two multitouch tables and an interactive wall providing digital highlights of around 400 items from the collections. This seven-metre wide curved wall driven by human gesture, with surround sound and dynamic collections management system integration, is unique among UK archives, libraries, and museums: <https://www.youtube.com/watch?v=xf07sHKAXTs>; <https://storify.com/msarahwickham/the-bigcurvyscreen>

The 'big curvy screen' was specially commended for innovation by CILIP in its digital Alan Ball Awards 2015. It also provides high-quality projection and sound for presentations, including film screening, and is situated in the 'Group Space,' which can be enclosed from the Exploration Space using sliding walls. This is used for informal and formal learning activities including regular meetings of local (non-university) groups, and other events including musical and dramatic performances.

Internal glazing gives views into the secure repositories, quiet study space in the research room, and main staff office. The intention is to promote awareness among different audiences of the various possibilities for exploring the collections and participating in activities, while retaining a measure of privacy and appropriate security. The three high-density repositories (256 m²) house the collections in British Standards Institution PD5454:2012 conditions; Heritage Quay is only the second university archive to have repositories to these standards.

Physical transformation has also enabled transformed service and innovation. Since the opening of Heritage Quay in October 2014 we have completely transformed the way in which the service and staff previously operated, in particular in establishing new programmes of events and outreach activities during the last two years, and making significant inroads into the backlog of collections management activities. In total we anticipated 10,000 visitors during 2014 to 2017, but 12,500 visitors have already been to Heritage Quay in the last 22 months; extensive

qualitative evaluation reveals high levels of user satisfaction and successful outcomes.



Photo: Simon Hadley

During this same period Heritage Quay was awarded Accredited Archive Service status (March 2016) and has retained the Customer Service Excellence award. Archives Accreditation is the UK standard for the 2000+ archive services in all sectors, and defines good practice and identifies agreed professional standards. This UK-wide quality standard offers a benchmark for gauging performance and recognising achievements and is awarded by the UK Archive Service Accreditation Committee; Heritage Quay is now one of only 51 Accredited Archive Services.

Sarah Wickham
University Archivist & Records Manager
Heritage Quay, University of Huddersfield

Design and suppliers:

Architect/interior design: **Darnton EGS (now Darnton B3)**

The Coach House
Monk Fryston Hall
Monk Fryston
Leeds LS25 5DU
T: 01977 681001
<http://www.darntonb3.com/>
Contact: Keith Hardcastle
keith.hardcastle@darntonb3.com

Project coordinator: **Wide Sky Design, multimedia consultancy and design**

Strelley Hall
Main Street
Strelley
Nottingham NG8 6PE
T: 0115 9061273
<http://wide-sky.co.uk/>
Contact: Chris Parker
chris@wide-sky.co.uk

Library movers: **Pickfords**

Genesis House
Kings Langley
WD4 8LZ
T: 0845 130 6559
<http://www.pickfords.co.uk/>
enquiries@pickfords.com

Library shelving: **Bruynzeel Storage Systems Ltd**

Sheddingdean Business Park
Marchants Way, Burgess Hill
West Sussex RH15 8QY
T: 0800 220 989
enquiries@bruynzeel.co.uk
<https://bruynzeel-storage.com>

Furniture supplier: **Broadstocks**

Brunel Road
Lyme Green Business Park
Macclesfield
Cheshire SK11 0TA
T: 01625 431979
www.broadstock.co.uk
sales@broadstock.co.uk

Teesside University Library, Teesside University

Strategic Alignment

Teesside University aims to be a leading University with an international reputation for academic excellence that provides an outstanding student and learning experience underpinned by research, enterprise and the professions. Students are at the heart of Teesside 2020, the University's corporate strategy. The library continues to play a key part in the delivery of the University's strategic aims as a significant learning space

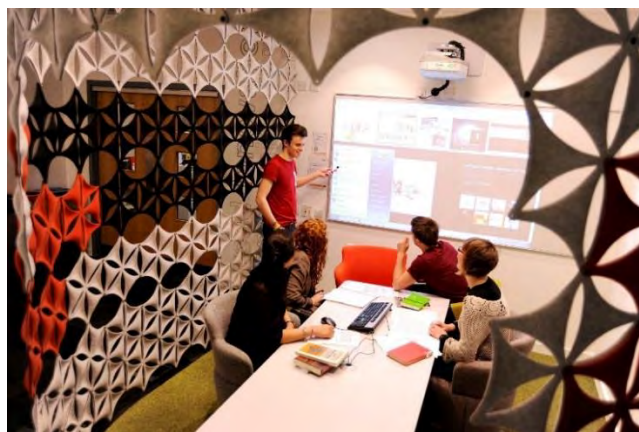
The Library building was planned thirteen years previously just before a major shift in thinking about library space. The purpose of this programme was to create a University library building fit for the twenty first century as outlined in the vision for 'an on-campus space which is the focus for learning, research, academic collaboration and contemplation and a key element of the student experience at Teesside.'

The scope of the original 2012 development project was reduced in scale from the whole building to a partial refurbishment which involved:

- the creation of a discrete silent study space on the third floor by screening off a previously open atrium
- the creation of social learning spaces on the ground floor, including a learning café.

Design

Key stakeholders for the development were students, staff, and the wider



university community. Initial consultation resulted in five key objectives for the development being agreed. These were:

- Improved range of learning environments
- Improved group work areas including a new learning café
- Improved silent study zone
- Improved access to ICT
- Improved accessibility

A collaborative approach was embedded into the programme and using a modified PRINCE2 project methodology ensured stakeholder contribution through the Steering Group and Project Team.

Stakeholders were surveyed about the effectiveness of the changes with overwhelmingly positive responses. Within the University the space is seen as an exemplar for learning space design and Library staff have been invited to advise on space design in other developments. The refurbishment was featured as one of the

21 'most interesting' University libraries of the 21st Century in *The Guardian* (August 2013).¹



Transformation

The refurbishment provided an opportunity to redesign L&S services and support. Following the recommendation of a space consultant, a series of 'enabling works' had been carried out. These included improving 'back office' processes including the introduction of shelf-ready books and a systematic stock review and reclassification programme as well as the introduction of a single sequence by Dewey number. Online 'LibGuides' were developed to facilitate easier access to subject resources.

The automation of transactional elements of the service including self-service issue, return and reservation collection, and online payment for fines and printer credit, together with the redesign of space enabled the refocussing of staff roles. In terms of back office, this relates to managing digital resources. The most significant change has been for 'front of house' staff whose role now relates entirely to supporting learning. The library now has

a first point of contact for all library functions. This is run on ITIL (IT Infrastructure Library) principles. The library counters have been removed and students may come to the *iZone* area itself or contact roving staff (student workers and Library Assistants) who are equipped with iPads and who work in an integrated team to support students where and when they need it. Student workers play an important role in service delivery through the provision of informal peer support as well as feedback to inform service development.



The redesign of the ground floor also afforded an opportunity to redesign the existing Academic Skills Centre. The new Learning Hub service delivers a holistic, highly visible, innovative and effective approach to learning support, focussing on student success. A Peer Assisted Study Sessions (PASS) scheme has been implemented to proactively provide further peer support within the curriculum.

The success of the refurbishment and new services have been reflected in sustained and improved NSS scores (88% in 2012; 89% in 2013 and 2014; 90% in 2015 and 91%

in 2016) and in high placing in the International Student Barometer (2nd place overall for Physical Library, Autumn Wave 2015) as well as positive feedback from individual students and staff as detailed in our submission.

¹ www.theguardian.com/higher-education-network/guardianwitness-blog/gallery/2013/aug/21/university-libraries-design-21-century

"This area has become very influential in terms of future University developments and is frequently referenced during design meetings as the area and usage of to match up to."

Principal Lecturer (Spatial Design)

"In my opinion the ground floor of the library has been refurbished to create a vibrant hub of student activity...This is just the first step to creating more social learning areas on campus."

Vice-President Education,
Students' Union

Denise Turner
Assistant Director Assistant Director
(Learning and Research Support,
Customer Services), Teesside University

Design and suppliers:

Architect/interior design: **CPMG**

23 Warser Gate
Nottingham NG1 1NU
T: 0115 958 9500
www.cpmg-architects.com
Contact: Hugh Avison (Design Director)
nottingham@cpmg-architects.com

Project coordinator: (External) **Summers Inman**

62 The Drive
Gosforth
Newcastle Upon Tyne
Tyne & Wear NE3 4AR
T: 0191 284 1121
M: 07736 921418
www.summers-inman.co.uk
Contact: Ian Campbell
ian.campbell@summers-inman.co.uk

Project coordinator: (Internal) **Teesside University Campus Services Department**

Teesside University
Middlesbrough TS1 3BX
T: 01642 218121
M: 07919 302456
Contact: Jim Marshall
enquiries@tees.ac.uk

Furniture supplier: **Orangebox**

Head Office and Manufacturing
Parc Nantgarw
Cardiff CF15 7QU
T: 01443 816604
<http://www.orangebox.com/>
Contact: Mino Vernaschi, Managing Director
mino.vernaschi@orangebox.com

Furniture supplier: **Lammhults**

Crest Contracts
13 Westfield Street
London SE18 5PH
T: 0845 299 3491
M: 07921 551 393
<http://www.lammhults.co.uk/>

Contact: Harriet Knight
harriet.knight@lammhults.co.uk

Furniture supplier: Howe UK Ltd

82 Clerkenwell Road
London EC1M 5RF
T: 020 3608 1939
M: 07802502323
<http://www.howe.com/en>
Contact: Tim Tootle
csuk@howe.com

Furniture supplier: Vitra Ltd

30 Clerkenwell Road
London EC1M 5PG
T: 020 7608 6200
<https://www.vitra.com/en-gb/home>
info@vitra.com

Furniture supplier: Fritz Hansen

13 Margaret Street
London W1W 8RN
T: 020 7637 5534
<http://www.fritzhansen.com/en/fritz-hansen>
salessupport@fritzhansen.com

Furniture supplier: Allermuir

11-13 Melton St
London NW1 2EA
T: 020 7388 7621
M: 07792 987681
<http://allermuir.com/>
Contact: Michelle Major
Michelle.major@southern.co.uk

Furniture supplier: Berne/Arper

11 Clerkenwell Road
London EC1M 5PA
T: 0207 2530009
M: 07500221750
www.arper.com
Contact: Silvia Giudice
silviagiudice@arper.com
london@arper.com

Furniture supplier: Martela

Martela Oyj
Takkatie 1, P.O.Box 44
FI-00371 Helsinki
T: +358 10 345 50
<http://martela.com/>
asiakaspalvelu@martela.fi

Furniture supplier: Hermann Miller

61 Aldwych
London WC2B 4AE
T: 0845 226 7202
M: 07725433027
<http://www.hermanmiller.co.uk/>
Contact: Alex Gillies
alex_gillies@hermanmiller.com

Carpet supplier: Interface

Shelf Mills
Shelf
Halifax HX3 7PA
T: 01274 690 690
<http://www.interface.com/EU/en-GB/homepage>
interface.nl@interface.com

Library systems: Bibliotheca/3M

Landmark House
Station Road
Cheadle Hulme
Stockport SK8 7BS
T: 0161 498 1140
M: 07768892694
<http://www.bibliotheca.com/3/index.php/en-uk/>
Contact: Simon Peacock
s.peacock@bibliotheca.com

The Cruciform Hub, University College London

The Cruciform Hub opened on 1 September 2014 following a three year refurbishment programme. Designed by Burwell Deakins Architects, the Hub provides a medical library and modern learning spaces for UCL's students and UCLH NHS Foundation Trust. It is located in the landmark Grade II listed Cruciform Building designed by Alfred Waterhouse; until the mid-1990s the building served as University College Hospital. The Hub extends over half of the lower ground floor of the building (1,740 m² with a capacity of 440).

Strategic alignment

Following a consultation in 2010-11 to inform UCL's new Estate Strategy, the Bloomsbury Masterplan (<http://www.ucl.ac.uk/masterplan>) proposed a vision of student-centred hubs. The Cruciform was one of the earliest projects to realise this ambition, and the first to incorporate a library. This was in the context of changing requirements in UCL's biomedical community, a new medical curriculum and the absence of an identifiable heart for the Medical School.

The project also met an objective of the Library Services 2011-14 Strategy, "... to support needs for study space and new, flexible spaces ... The Library should play a central part in UCL's identity as a world-leading university and be a source of pride for UCL students and staff."

As a flagship project, it has set the standard for learning space developments at UCL and is the model for a 1,000 seat student centre opening in 2018. A case study on the Hub for 'UCL 2034', the University's 20-year

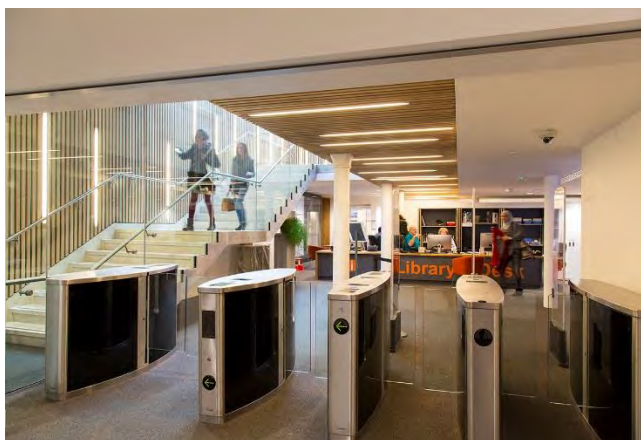


Photos: © UCL Digital Media, All Rights Reserved.

strategy launched in 2014, forms part of the 'Sustainable Estate' key enabler <https://www.ucl.ac.uk/ucl-2034/key-enablers/estate/case-studies>

Design

Pedagogical considerations were a driver for the project and influenced the design, acknowledging changes to the way students expect and are expected to study and facilitating movement and synergy between social, group and individual learning in a choice of formal and informal settings. The existing Cruciform Library (1999) was valued as a place for quiet study, however the Library occupied several separate rooms with no clear entrance point, there was limited IT provision, a need for alternative types of spaces including areas for confidential discussion of clinical topics, and demand for refreshment facilities, extended opening and a better working environment. The re-design, integrating the Library with adjacent teaching areas, improved spatial connections, removed physical barriers (walls, corridors) and created a new central entrance.



The planning and design process was collaborative and consultation was extensive, ensuring that decisions were fully informed. There were over 1,000 responses to a survey in November 2011 that made a significant contribution to the brief. Membership of the Project Board, led by UCL Estates, was very inclusive with student, Faculty and Professional Services representation and there were opportunities to test furniture and layouts, and for stakeholders to meet the architects and influence the final design.

Several challenges were addressed:

- **Creating a modern facility in an historical building**

By revealing original features and use of complementary tones, the design was sympathetic to the heritage of the building

- **Preserving a medical identity**

A graphic timeline, research images, and exhibition walls with medically-themed displays, were integral to the design.

- **Achieving a balance between traditional library and communal spaces**

The quiet and silent areas were positioned at the periphery, with collaborative areas and library staff support located at the centre.

- **Sustainability**

The Hub was designed to meet high standards of environmental good practice, was featured as a Case Study in UCL's Sustainability Annual Report for 2013-14 and achieved a RICS SKA Gold award.

Transformation

The Cruciform project delivered an opportunity for the Library to be at the centre of the student learning experience, in a welcoming, attractive and inclusive environment:

- **Accessible**

Enabling all users to share the same experience.

- **Convenient**

Introducing book and laptop self-service loans, and 24-hour opening.

- **Flexible**

Providing teaching areas designed to facilitate group learning or individual study; student bookable pods and study rooms for confidential group work, peer-to-peer tutoring and clinical scenario practice; silent and quiet spaces for personal work.



- **Responsive**

Equipping the library team with the skills to manage IT enquiries, in a pilot collaboration with UCL's Information Services Division.

- **Considerate**

Offering water fountains, vending facilities and relaxing regulations on eating and drinking.

The Hub has been immensely popular since it opened, appealing to students across UCL as well as Health Service staff and attracting visitors from around the world. Championed by UCL's senior officers and showcased by UCL Development and Alumni Relations, it embodies the range of facilities and services which underpin research-based education at UCL.

Kate Cheney
Head of Site Library Services,
UCL Library Services

Design and suppliers:

Architect/interior design: **Burwell Deakins Architects**

Unit 001 California Building
Deals Gateway
London SE13 7SF
T: 020 8305 6010
<http://burwellarchitects.com/>
Contact: Simon Parkes
sp@burwellarchitects.com

Project coordinator: **Parsons Brinckerhoff (and UCL Estates)**

WSP House
70 Chancery Lane
London WC2A 1AF
T: 020 7314 5000
<http://www.wsp-pb.com/en/WSP-UK/>

Library movers: **Harrow Green**

2 Oriental Road
London, E16 2BZ
T 020 7540 6500
<https://www.harrowgreen.com/>

Library shelving: **Ecospace**

Masons Gate
Townsend
Marsh Gibbon, Bicester
Oxon OX27 0EY
T: 01869 278002
<http://www.ecospace.co.uk/>

Furniture supplier: **JPA**

Sphere Industrial Estate
Campfield Road
St Albans AL1 5HT
T: 01727 840 800
<http://www.jpa-furniture.co.uk/>

Furniture supplier: **Orangebox Via JPA**

(Study desks and chairs and office furniture)
<http://www.orangebox.com/>

Furniture supplier: **Human Scale Via JPA**

(Monitor arms and desk lamps)
<http://www.humanscale.com/>

Counter suppliers: Hurst Joinery Projects Ltd

Aynsley House
Common Road
Low Moor
Bradford BD12 0UF
Tel: 01274 670077
<http://www.thehurstgroup.co.uk/hurst-joinery-projects/>

Carpet supplier: Interface

(for carpet floor tiles)
Shelf Mills
Shelf
Halifax HX3 7PA
T: 01274 690 690
<http://www.interface.com/EU/en-GB/homepage>

Library systems: Bibliotheca/3M

(Self-service RFID equipment and material tagging)
<http://www.bibliotheca.com/3/index.php/en-uk/>

Library systems: Reflex

(AV equipment and screens)
<http://www.reflex.co.uk/>

Library systems: Crestron

(Room booking panels)
<https://www.crestron.com/>

Library systems: Xerox Via UCL Information Systems Division

(Multi-Function Devices for Print/Scan/Copy)
<https://www.xerox.co.uk/>

Library systems: Telepan/Gunnebo

(Access control gates and Sentry control software)
<http://telepen.co.uk/gunnebo/>

Library systems: VSG

(CCTV system)
<http://www.vsg.co.uk/>

Library systems: Claremont Eavs

(Tannoy system)
<http://claremonteavs.com/>

Library systems: Lapsafe

(Laptop loan system)
<https://www.lapsafe.com/>

Library systems: Click Netherfield

(Exhibition cases)

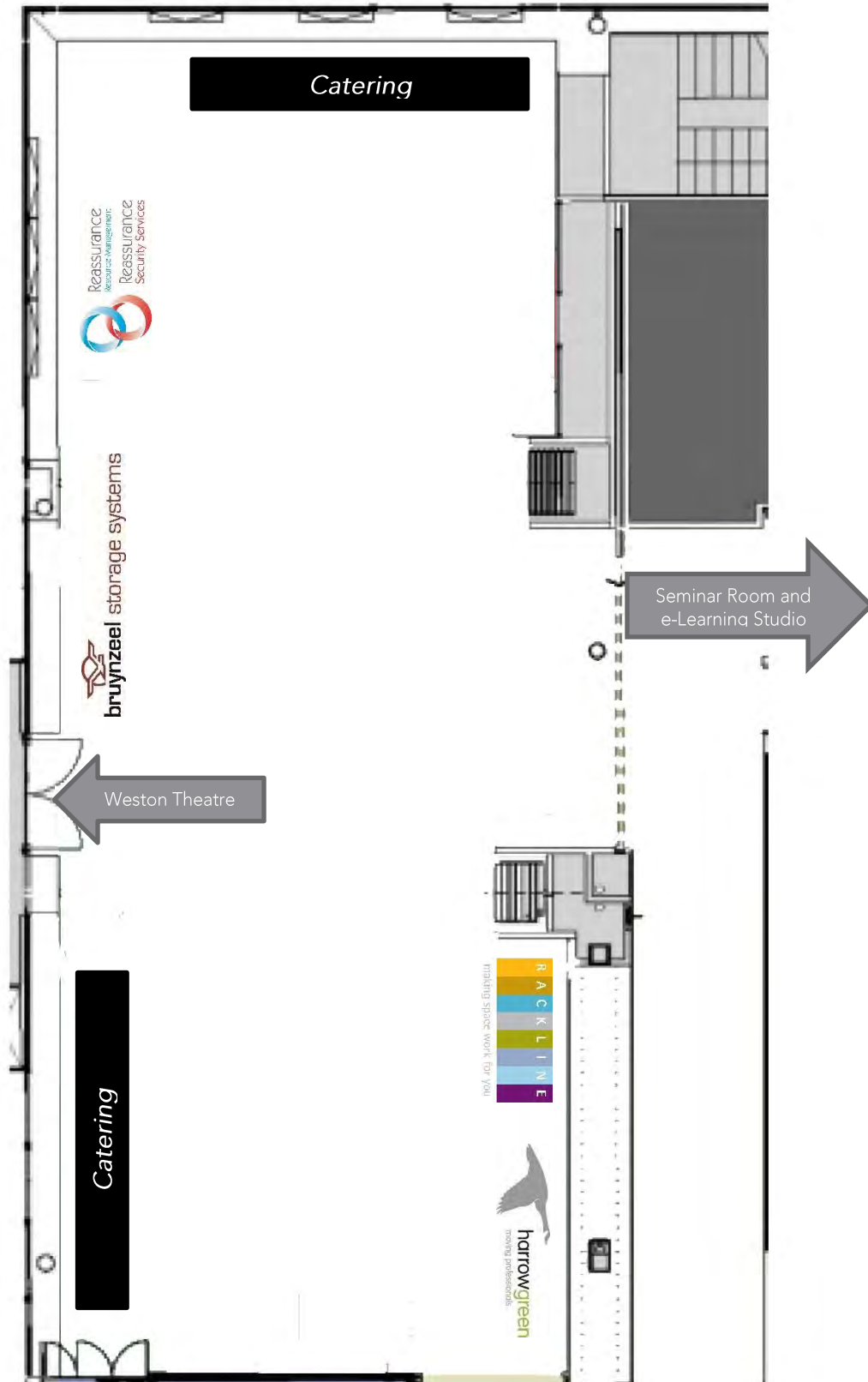
<http://www.clicknetherfield.com/>

Library systems: Gresswell

(Book return bins and book trolleys)

<http://www.gresswell.co.uk/>

Exhibitors



Exhibitor listings

Bruynzeel Storage Systems Ltd

Bruynzeel is Europe's leading manufacturer of specialist storage systems. Its library and education service includes the design and installation of space saving mobile shelving, double decker systems, static library shelving, low-level units for book display and a range of archival solutions for special collections.

Our UK team specialises in the design of electronic mobile shelving for public and university libraries. Bruynzeel is a Crown Commercial Service supplier. All our systems conform to PD5454:2012.

Clients include: Lambeth Palace Library; Library of Birmingham; University of Bedfordshire; University of Greenwich; University of West London.

We are proud suppliers to the following organisations shortlisted for SCONUL Library Design Awards 2016: University of Huddersfield (Heritage Quay), Maynooth University Library, Teesside University Library

Find us in the Clore Learning Centre and come see our presentation in the Seminar Room.

Harrow Green

Harrow Green leads on library moves, with over 30 years' experience of packing and handling general and special collections, artefacts and rare or precious items. Our specialist library and archive division have skills and knowledge in wrapping, packing and moving books and materials, sequential moving, shelf re-pitching, Dewey, Congress and Binary classification systems, including merging and separating book collections. We offer access to National Conservation Service (NCS) approved heritage storage facilities, implement speedy retrieval services and disposal of unwanted books through charity partners. Libraries trust us with their collections because of our experience, expertise and successful track record in delivering quality services.

Find us in the Clore Learning Centre and come see our presentation in the e-Learning Studio.



www.bruynzeel-storage.com

Lisa Angell
Sales Support

E: enquiries@bruynzeel.co.uk
T: 0800 220 989



www.harrowgreen.com

T: 0345 603 8774

Rackline

Rackline are one of the UK's leading manufacturers of high density storage and shelving systems. As specialists in the education and library sector, Rackline offer a wide range of products that include library shelving, mobile shelving, electronic mobile shelving, low level storage, cabinets and cupboards. Our systems are designed to cater for the various requirements within a busy education environment which includes libraries, archives, laboratories, classrooms and office space.

We have a large team of designers who will attend site, provide storage audits, design space plans and provide detailed quotations for your current budget or for your future plans.

Find us in the Clore Learning Centre.

Reassurance Security Services Ltd Reassurance Resource Management Ltd

The best of both worlds; security and library assistants providing an enhanced level of customer service to your student base throughout the academic year.

The combination of a unique staffing option, working in tandem, has created a niche market for a superior out of hour's service to University libraries.

We provide flexible, cost effective and bespoke services to the University sector, creating added value options to increase the usage of your library space during the out of hours opening.

Interested in finding out more? Please visit the stand for a chat!

Find us in the Clore Learning Centre.



making space work for you

www.rackline.com

Tracy Goodwin
Commercial Manager

Rackline
Oaktree Lane
Talke
Newcastle-under-Lyme
Staffordshire ST7 1RX

E: tracy.goodwin@rackline.co.uk
M: 07771 575876
T: 01782 770144



www.reassurancesecurityservices.co.uk
www.reassuranceresourcemanagement.co.uk

Kathryn McGowan
Contract Director

Reassurance Security Services Limited
1st Floor, Venture House
6 Silver Court, Watchmead
Welwyn Garden City
Hertfordshire AL7 1TS

E: Kathryn@reassurancesecurityservices.co.uk
E: Kathryn@reassuranceresourcemanagement.co.uk
T: 0845 372 1995

SCONUL would like to thank the following sponsors for their support

