

Cruciform Hub, UCL

SCONUL Design Awards 2016

Dr Paul Ayris

Pro Vice-Provost & Director of UCL Library Services
Co-Chair of the LERU community of Chief Information Officers
Adviser to the LIBER Board

e-mail: p.ayris@ucl.ac.uk



The Cruciform Hub Project

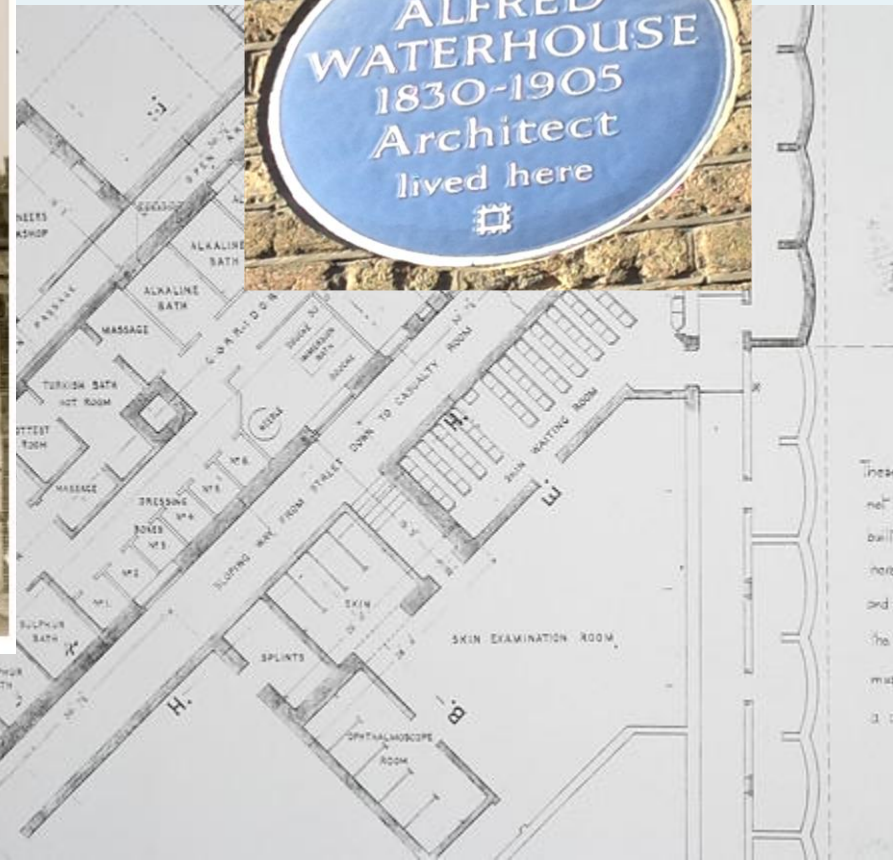
- A short history
- Strategic alignment
- Design
- Transformation





See <http://www.flickrriver.com/photos/macspud/sets/72157627574709397/>

Grade II listed Cruciform Building opened in 1906 as University College Hospital Architect: Alfred Waterhouse



From the UCH Medical School Library



1907-1999, adjacent Rockefeller Building

To the Cruciform Library



1999-2013 – over four rooms, either side of a corridor

**To the
Cruciform
Hub 2014-

– staff
support
for all
library
and IT
services**



Cruciform Hub, UCL Library Services

The Cruciform Hub Project

- A short history
- Strategic alignment
- Design
- Transformation



Cruciform project 2011-2014

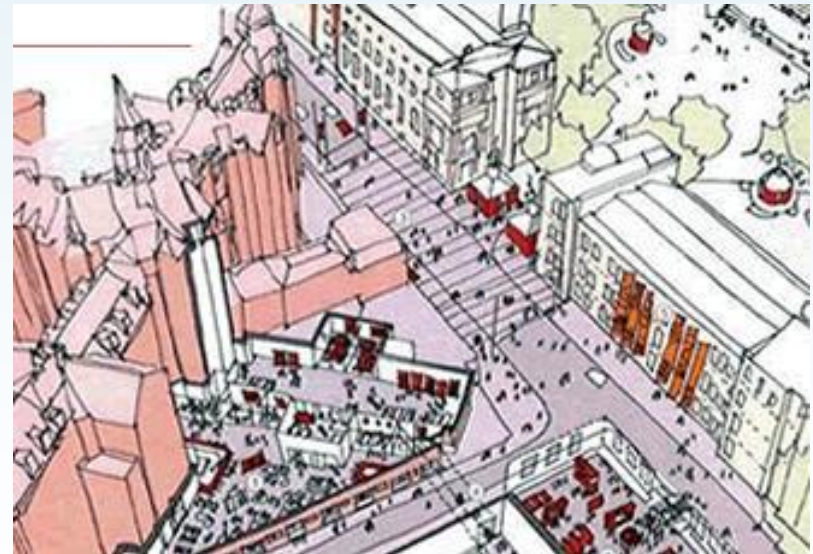
UCL Masterplan published - destined to be the first 'Library Hub'

Issues

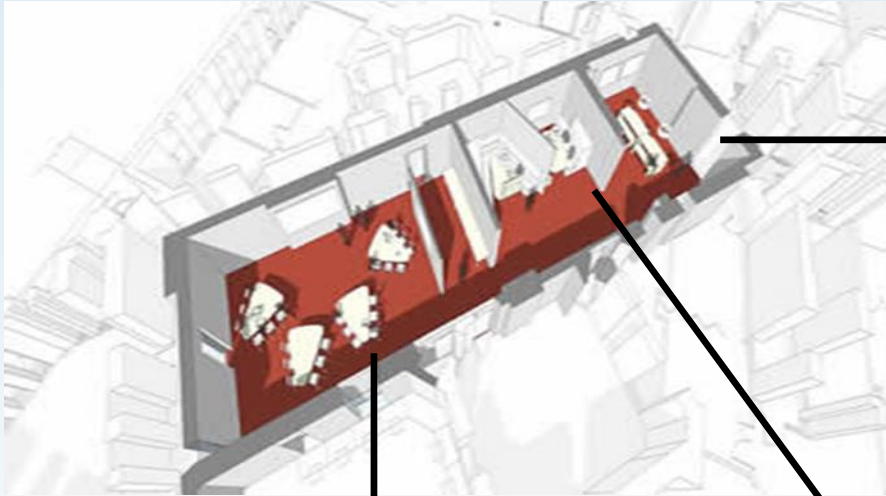
- no project learning space (UG & PG)
- no heart for students of the Medical School

Proposal

- enhance Medical School presence
- re-furbish the current library
... to create a variety of student and academic orientated spaces, from project learning to quiet study



Piloted designs for the Hub, as a model for future developments at UCL (2012 – 2013)



Student recollection of the pilot consultation

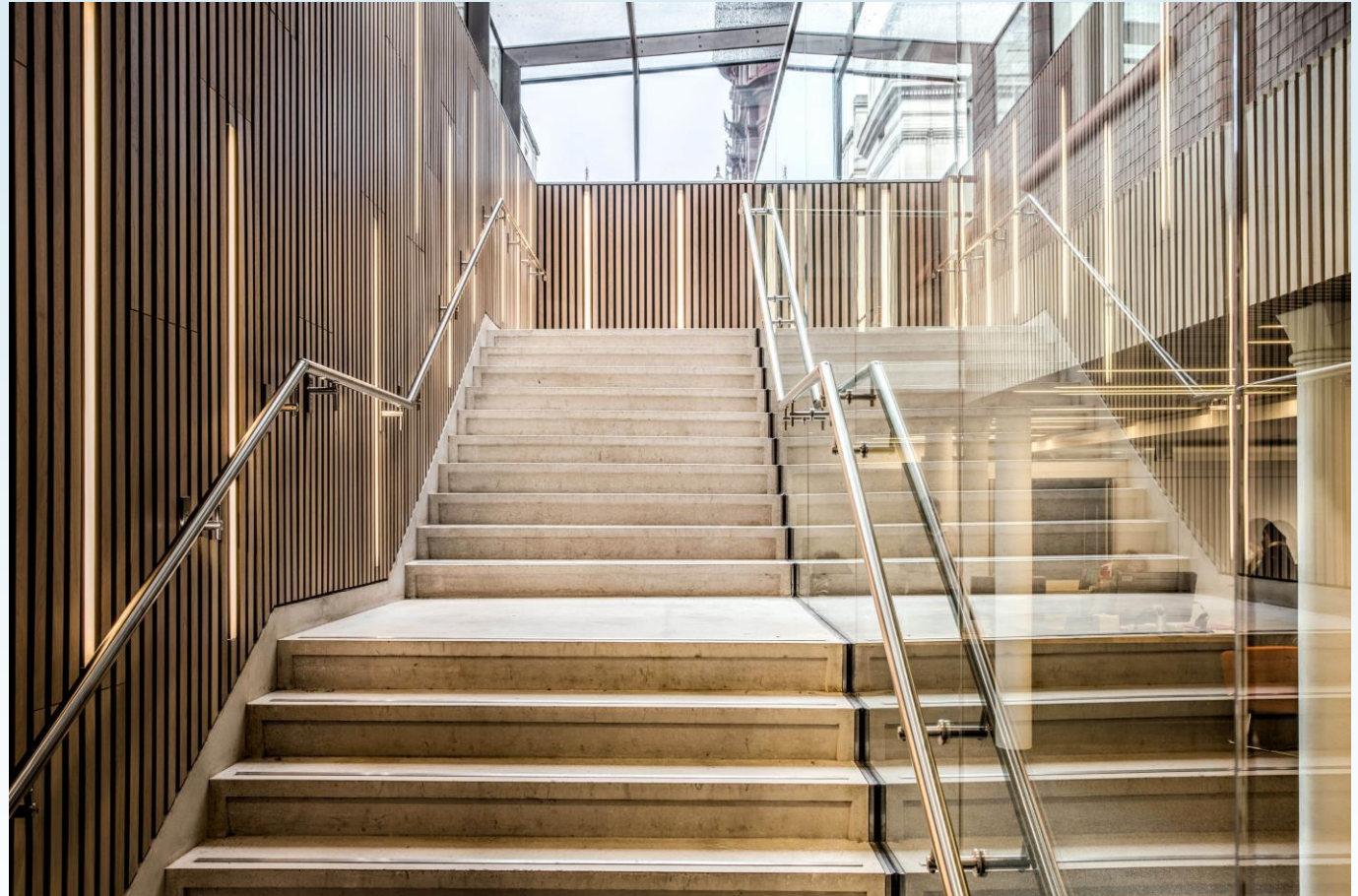
“ ... we let [1000+] **students vote** on their preferred group study spaces as well as the types of tables, chairs and lamps - all of which have been incorporated into the hub. [Library Services] also responded very positively to the **petition** ... requesting a **vending machine, coffee machine and water fountains** in the hub - none of which existed in the former Cruciform library.”

The Cruciform Hub Project

- A short history
- Strategic alignment
- Design
- Transformation



Design



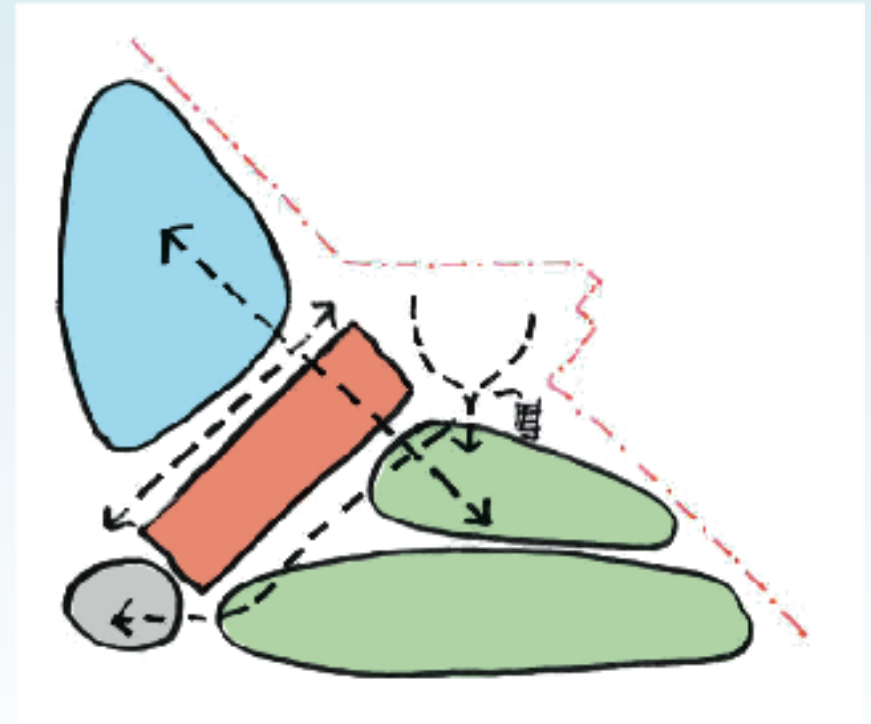
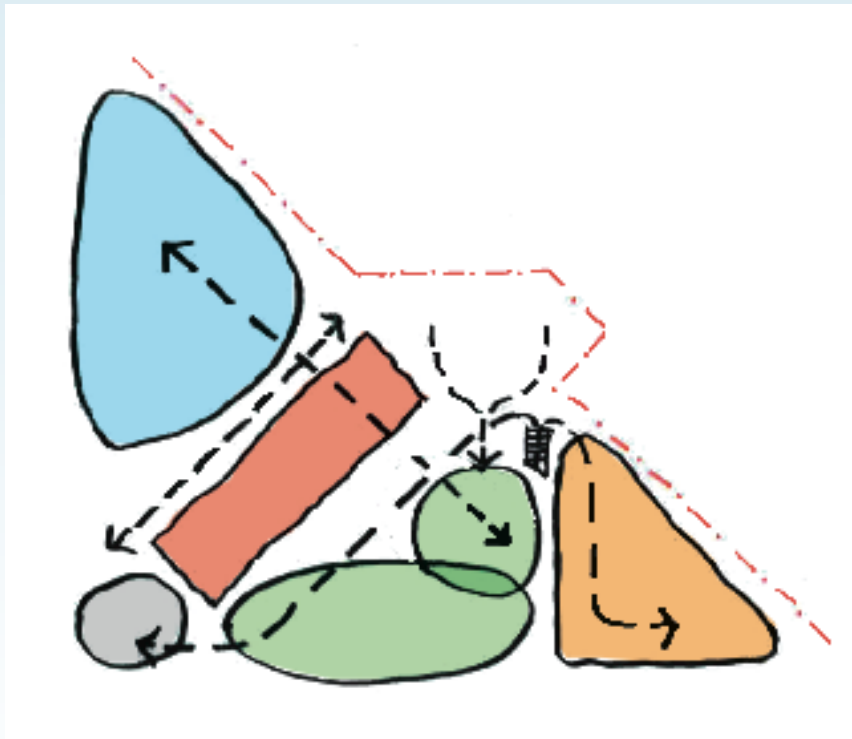
A new entrance staircase reintroduces a direct link with the Hub, enhancing the medical schools presence on campus, whilst relieving congestion within the main part of the building

Design



A clear and legible circulation pattern and arrangement of spaces that work within the limitations of the existing building, whilst maximising natural and borrowed light and the connectivity between spaces.

Design



Offering flexibility that allows the library to expand to maximise study space capacity when teaching rooms are not required.

Design



With a range of spaces and furniture types that respond to the way that medical students want to study and learn in the 21st Century.

The Cruciform Hub Project

- A short history
- Strategic alignment
- Design
- Transformation



VI. Use of the Library for Reading.

1. The Library is open to all students of the Medical School.
2. The Library may also be used for reading by any person who is allowed to take out books.
3. Silence shall be maintained.
4. Readers shall sit at the tables and not stand together in any part of the Library.
5. A Student wishing for a book shall apply for it by formal entry in a Register kept for the purpose.
6. Books shall be taken down and replaced by the Librarian only.
7. No person when writing shall place the writing paper on a book or lean on a volume, or make any mark in it, or do anything else which in the opinion of the Librarian, may damage a book.
8. The Librarian shall preserve order and report to the Dean any con-

User Experience improvements

- Bookable group spaces
- Social learning space
- 'Quieter' quiet study
- 100+ more spaces
- 24-hour opening
- One-stop support for library and IT enquiries
- NHS workstations, UCL laptop loans
- Food & drink permissions and vending
- Better lighting and ventilation



Immediate feedback, 2014



“Love the new cruciform hub!”

“Absolutely stunning hub!!

Couldn't be any better.

Everything I need is in there so looks like I won't be moving very much ;)”

Feedback remains positive

My feedback on 24/7 opening:

Home Away
from Home
♥ ♥ ♥

Optional:
Are you Undergraduate Masters PhD Other
Course / Subject: BAS 1

My feedback on 24/7 opening:

I ♥ Crucihub

Optional:
Are you Undergraduate Masters PhD Other
Course / Subject: _____

My feedback on 24/7 opening:

Such a massive
help! We love
Crucial

Optional:
Are you Undergraduate Masters PhD Other
Course / Subject: _____

The Cruciform Hub Project

- A short history
- Strategic alignment
- Design
- Transformation
- And finally





Anthony Smith @AnthonySmithVP - Jul 21

Great to say thank you to wonderful library professionals for all they do to support students @UCLLibraries @ucylpay



🔄 18 ⭐ 10 ⋮

[View photo](#)