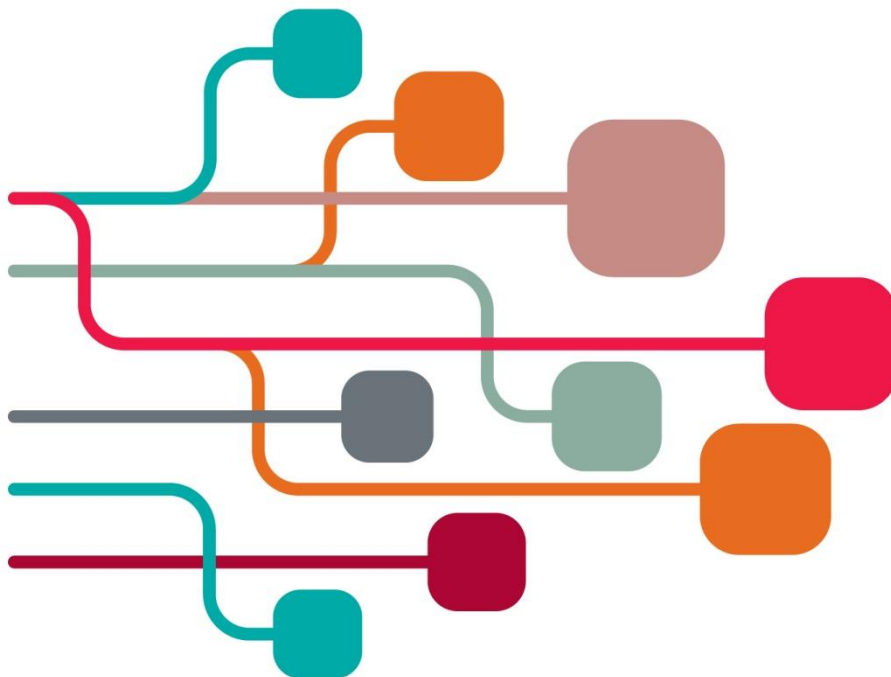


## SCONUL Summer Conference and AGM 2019

11-12 June 2019

# Delivering through partnerships



Mercure Manchester Piccadilly  
Portland Street, Manchester M1 4PH

# Contents

[Conference programme](#)

[page 1](#)

[Venue information](#)

[page 5](#)

[Using wifi](#)

[page 7](#)

[Speaker biographies](#)

[page 9](#)

[Delegates](#)

[page 17](#)

[Welcome drinks reception](#)

[page 25](#)

[Conference dinner](#)

[page 26](#)

[Parallel sessions](#)

[page 28](#)

[Parallel sessions attendee lists](#)

[page 41](#)

[Fringe](#)

[page 54](#)

[Meet our sponsors](#)

[page 59](#)

[Exhibition layout](#)

[page 65](#)

---

## Conference programme

### Monday 10 June

18.30-20.00	Welcome drinks reception, Mercure Manchester Piccadilly <b>Terrace room</b>
-------------	---

### Tuesday 11 June

10.00	Registration and coffee <b>Foyer</b>
10.15	<b>Welcome</b> from Pete Ryan, Chair of SCONUL and Director of Library and Learning Resources, Canterbury Christ Church University
10.20	SCONUL AGM (see separate AGM pack) <b>International Suite</b>
11.15	<p><b>Parallel sessions: SCONUL projects (see page 28 for further details)</b></p> <ul style="list-style-type: none"> <li> <p><b>Collaboration group: AI for libraries: use cases and value propositions</b></p> <p>Led by Liz Waller, group Chair and Director of Library &amp; Heritage Collections and University Librarian, Durham University; and Nick Barratt, group Vice-Chair and Director, Senate House Library, University of London.</p> </li> <li> <p><b>Content group: Plan S: the death of big deal subscriptions?</b></p> <p>Led by Stella Butler, group Chair and University Librarian and Keeper of the Brotherton Collection, University of Leeds; and Chris Pressler, group Vice-Chair and University Librarian and Director of The John Rylands Library University of Manchester; with Anna Vernon, Head of Licensing, Jisc Collections.</p> </li> <li> <p><b>Transformation group: Why do our users love our libraries; are we getting it right on digital preservation and other critical questions</b></p> <p>Led by Judith Keene, group Chair and University Librarian, University of Worcester and Chris Fowler, Head of Library Services and University Librarian, Bournemouth University.</p> </li> <li> <p><b>Workforce Development group: The experience of BAME staff working in SCONUL member libraries</b></p> <p>Led by Regina Everitt, Director of Library and Learning Services at University of East London with Dr Mohammed Ishaq, Reader, School of Business and Enterprise, University of the West of Scotland.</p> </li> </ul>
12.00	Coffee <b>Terrace room</b>

Tuesday 11 June	
12.30	<p><b>Keynote:</b> European universities' roles in fostering Open Science</p> <p>Lidia Borrell-Damián, Director for Research and Innovation, European University Association</p>
13.15	Lunch <b>Level 3 Restaurant</b>
14.15	<p><b>Panel discussion:</b> <i>Delivering the library workforce of the future</i></p> <ul style="list-style-type: none"> <li>• Regina Everitt , Director of Library and Learning Services, University of East London</li> <li>• Gary Loke, Director of Knowledge, Insights, Innovation and Delivery, Advance HE</li> <li>• Vijaya Nath, Director, Contemplative Spaces</li> <li>• Nick Poole, Chief Executive Officer, CILIP</li> </ul> <p>Chaired by: Caroline Taylor, Chair, SCONUL Workforce Development Task and Finish Group and University Librarian, University of Leicester</p>
15.15	The SCONUL Fringe (see page 54 for details)
16.00	Coffee <b>Terrace room</b>
16.30	<p><b>Keynote:</b> <i>Partnerships in practice</i></p> <p>Liz Jolly, Chief Librarian, The British Library</p>
17.15	Close
18.30	Meet in the Mercure Manchester Piccadilly Hotel lobby
18.40	Coach departs for the Science and Industry Museum
19.00	Conference Dinner, <b>Science and Industry Museum</b> (see page 26 for details)



Wednesday 12 June	
08.30	<p><b>Keynote speech:</b> <i>National and international collaboration on the cost of content and open access</i></p> <p>David Sweeney, Executive Chair, Research England</p>
09.30	<p><b>Parallel sessions: SCONUL projects (see page 28 for further details)</b></p> <ul style="list-style-type: none"> <li> <p><b>Collaboration group: AI for libraries: use cases and value propositions</b></p> <p>Led by Liz Waller, group Chair and Director of Library &amp; Heritage Collections and University Librarian, Durham University; and Nick Barratt, group Vice-Chair and Director, Senate House Library, University of London.</p> </li> <li> <p><b>Content group: Plan S and transitional deals</b></p> <p>Led by Stella Butler, group Chair and University Librarian and Keeper of the Brotherton Collection, University of Leeds; and Chris Pressler, group Vice-Chair and University Librarian and Director of The John Rylands Library, University of Manchester; with Liam Earney, Director of Licensing, Jisc.</p> </li> <li> <p><b>Transformation group: Why do our users love our libraries; are we getting it right on digital preservation and other critical questions</b></p> <p>Led by Judith Keene, group Chair and University Librarian, University of Worcester and Chris Fowler, Head of Library Services and University Librarian, Bournemouth University.</p> </li> <li> <p><b>Workforce Development group: The experience of BAME staff working in SCONUL member libraries</b></p> <p>Led by Caroline Taylor, group Chair and University Librarian, University of Leicester with Dr Mohammed Ishaq, Reader, School of Business and Enterprise, University of the West of Scotland.</p> </li> </ul>
10.15	Coffee <b>Terrace room</b>
10.45	<p><b>Keynote:</b> Artificial Intelligence: lessons from the National Library of Norway</p> <p>Svein Arne Brygfjeld, Advisor, National Library of Norway</p>
11.45	The SCONUL Fringe (see page 54 for details)
12.30	Lunch <b>Level 3 Restaurant</b>

Wednesday 12 June

13.30	<p><b>Panel discussion:</b> <i>Partnerships in practice</i></p> <ul style="list-style-type: none"><li>• John Chambers, Chief Executive, Archives &amp; Records Association UK &amp; Ireland</li><li>• Liz Jolly, Chief Librarian, The British Library</li><li>• Jill Stevenson, Dean for Equality, Diversity and Inclusion and Head of Student Support Services, University of Stirling</li><li>• Sue Williamson, Director for Libraries and Birmingham, Arts Council England</li></ul> <p>Chaired by: Ann Rossiter, Executive Director, SCONUL</p>
14.15	<p><b>Keynote:</b> <i>AI and the transformation of services</i></p> <p>Rumman Chowdhury, Global Lead for Responsible AI, Accenture Applied Intelligence</p>
15.10	<p><b>Closing remarks:</b> Caroline Taylor, Vice-Chair of SCONUL</p>
15.15	<p>Close and Coffee <b>Terrace room</b></p>

## Conference hotel

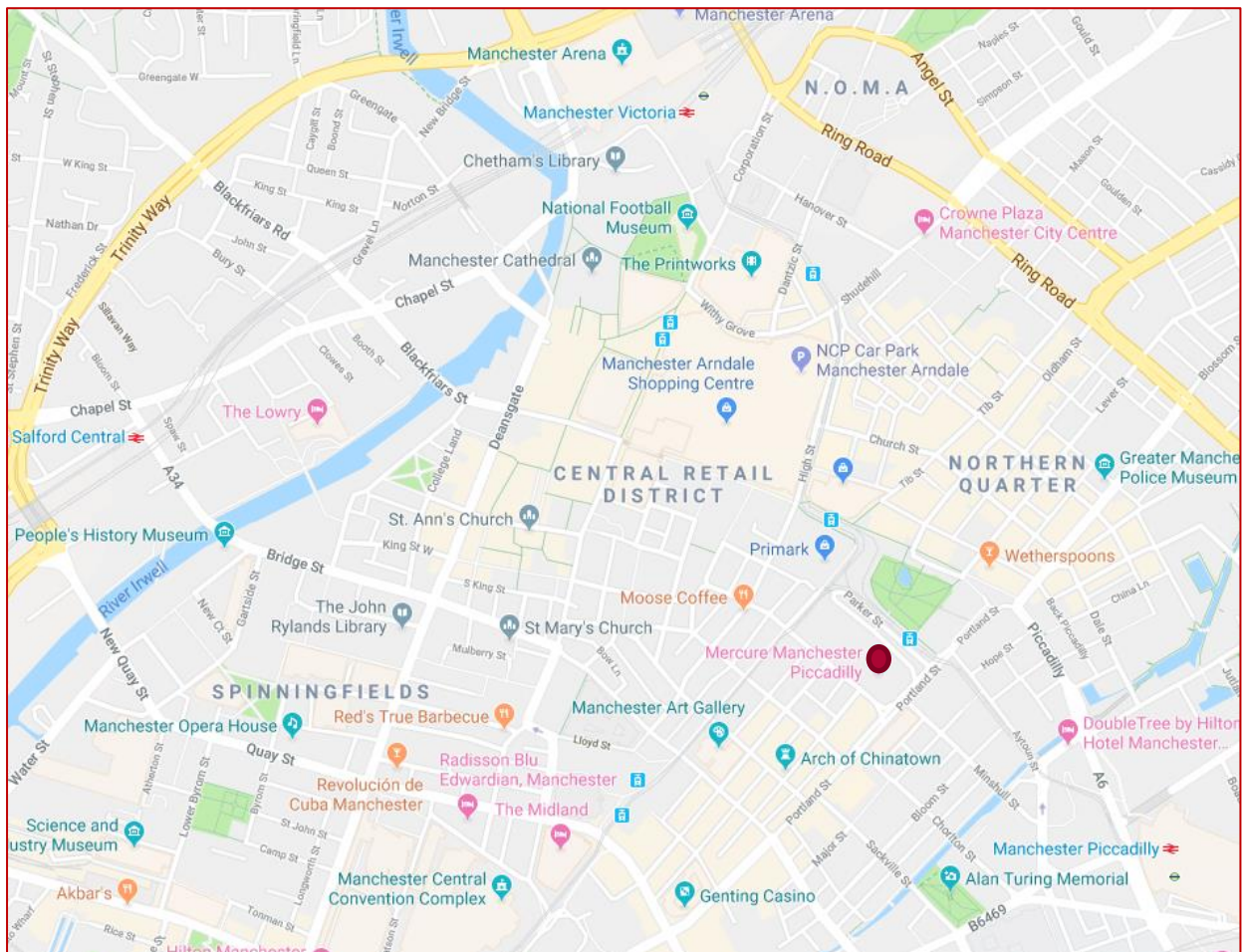
The SCONUL Summer Conference and AGM 2019 will take place at the Mercure Manchester Piccadilly hotel in Manchester.

The main conference hall, the International Suite, is on the third floor. The Park Avenue, Hyde Park, Central Park and Victoria Park meeting rooms are on the fourth floor.

## Getting to the conference hotel

Mercure Manchester Piccadilly  
 Portland Street  
 Manchester  
 M1 4PH

[www.mercuremanchester.co.uk/](http://www.mercuremanchester.co.uk/)



# SCONUL Mentoring

Share your time and experience and become a SCONUL Mentor

The mentoring scheme supports emerging and newly appointed leaders, by partnering them with more experienced colleagues, who can guide them in their professional growth.



The scheme is seeking mentors from across SCONUL but especially from London and the South East of England

Want to find out more while you are at the conference?

Seek out Alison Baud or Lesley Castens

Or explore the mentoring web pages;

<https://www.sconul.ac.uk/page/sconul-mentoring>

## Using wifi at the conference hotel



Wifi is available free of charge within the hotel for all SCONUL delegates. To connect to the internet please follow the steps below:

Wifi network: Conference

Access code: Mercure24

- Connect to *Conference* from the list of available networks. Enter the password when prompted.
- As an alternative, connect to Mercure from the list of wifi connections. Allow the landing page to load and click accept.



#sconul19

# Kortext



## ACCESS. ENGAGE. ANALYSE.





### Content and Discovery

eTextbooks, course packs, open education resources, bespoke university content and more in a personal digital library



### Student Engagement

Enhance learning experiences with anytime, anywhere access to digital content and smart study tools



### Learning Analytics

Gain detailed insight into student learning behaviour, from individuals to entire cohorts



[www.kortext.com](http://www.kortext.com)



[info@kortext.com](mailto:info@kortext.com)



+44 (0)1202 551203



## Speakers

### In order of appearance



#### Pete Ryan

Director of Library and Learning Resources, Canterbury Christ Church University and Chair of SCONUL

Pete has over 30 years of experience in libraries within the public and HE sectors. In his current role at Canterbury Christ Church University he is a champion of the student experience, learning innovation and the research endeavour, and is committed to the student and researcher voice in service development. Working in a competitive environment with financial challenges, the pursuit of efficiency and effectiveness are also critical to his role. Through Pete's contribution to the planning, development and implementation of Augustine House Library and Student Services Centre he has led Library and Learning Resources through a period of significant change and has contributed to the development of university learning services, including a partnership with the universities of Kent and Greenwich at the Medway campus. Pete is jointly leading the development of a medical school library in partnership with colleagues from the University of Kent.

Whilst working in public libraries he was an active committee member of the Public Libraries Group of CILIP, specifically in the role of Treasurer. Pete has been actively involved in regional library developments and was a member of the M25 steering group. In 2016 Pete joined the Executive Board of SCONUL, and in 2018 he became SCONUL Chair.



#### Lidia Borell-Damián

Director for Research and Innovation, European University Association

Lidia has worked for the European University Association (EUA) since 2006 and has served as Director for Research and Innovation (R&I) since January 2014. She is responsible for the strategy and implementation of work aimed at supporting and enhancing the role of universities as major research and innovation organisations at the European level.

Her responsibilities include the coordination of policy input based on the evidence and practice provided by EUA individual members and the National Rectors' Conferences. Additionally, she is in charge of R&I policy input in collaboration with other major pan-European university networks and relevant stakeholders in the sector. Her areas of work and activities cover a wide range of current EU priorities, namely the Framework Programme (Horizon 2020 and its successor Horizon Europe); the European Research Area; research infrastructures; research integrity; university-business cooperation; Regional Innovation Strategies for Smart Specialisation (RIS3); and the Digital Agenda and Open Science. She also addresses the broad fields of doctoral education and doctoral careers in collaboration with the EUA Council for Doctoral Education.

## SCONUL Summer Conference and AGM 2019

As a strategic underlying societal challenge for EUA, she also coordinates scientific policy input through the EUA Energy and Environmental Platform. On Open Science, she coordinates EUA input to EU policy development and leads two working groups: the EUA Expert Group on Science 2.0/Open Science and the High-Level Group on Big Deals.

She holds a Doctorate in Chemistry from the University of Barcelona. Prior to joining EUA, she was Director of Research at Universitat Pompeu Fabra in Barcelona from 2003-2005. She has also worked in the private sector for a chemical company in Spain as the R&D Deputy Director from 2001-2003. Previously she was a researcher and an Assistant Professor at the University of Barcelona from 1990-1998; a Visiting Scholar at North Carolina State University (USA), 1997-1998; and a Post-Doctoral Researcher at The University of Western Ontario (Canada), 1999-2000.



Credit: David Bracegirdle

### Regina Everitt

#### Director of Library and Learning Services, University of East London

Regina Everitt began her professional career as a technical author/trainer working with computer companies that developed bespoke software for the manufacturing, pharmaceutical and financial sectors in the US and UK. As a Peace Corps volunteer in Central and West Africa, she taught English as a foreign language and ran a small library and cultural centre. Her experience in the Peace Corps set the scene for her future career as she later transitioned into the HE sector developing and managing libraries, social learning spaces, and other learning resources.

Regina enjoys the mixed portfolio of converged library, IT and other learning support services. In her role at the University of East London she has strategic responsibility for library, archives, and the Centre for Excellence in Learning and Teaching. She was previously Interim Director at SOAS, managing the library, IT service desk, multimedia, and printer services.

Concerned about the low representation of BAME staff members in leadership positions in academic libraries, she co-project managed SCONUL research to document BAME staff experiences in member libraries with a view to working with the sector to positively influence the trend. She is also a member of the CILIP Steering Group for the newly-formed Network for BAME Library and Information Professionals as well as a member of the Steering Group for the M25 Consortium of Libraries.

Regina's 'likes' include watching super hero films with her son (Black Panther and Batman are favourites) and 'out-dancing' her son at R&B/Hip Hop concerts. She supports her husband's obsession with golf by accompanying him to resorts where she tends to get as far as the spa.





## Gary Loke

Director of Knowledge, Innovation and Delivery,  
AdvanceHE

Gary Loke is Director of Knowledge, Innovation and Delivery at Advance HE where he is responsible for leading on research, thought leadership and the content delivery of Advance HE's services. Prior to his current role, Gary was Deputy Chief Executive at the Equality Challenge Unit, which he joined in 2008.

Gary's career has centred on HE and equality policy and public affairs. He is currently a member of the gender equality commission of the Swiss National Science Foundation and has most recently contributed to Arday, J. and Mirza, H. S. (2018) *Dismantling Race in Higher Education: Racism, Whiteness and Decolonising the Academy*. UK: Palgrave Macmillan.



## Vijaya Nath

Director, Contemplative Spaces

Vijaya has over 30 years of experience in developing leaders in the private and not-for-profit sectors. For the past 23 years she has worked with leaders in health and care and HE in the UK and internationally. She has significant experience in the design and development of innovative leadership programmes and senior organisational development consultancy. She is a European Mentoring and Coaching Council accredited executive coach with over 10,000 coaching hours' experience. She is an experienced 'C suite' and board level facilitator and coach.

Vijaya was formerly Director of Leadership Development at the Leadership Foundation for HE and Director of Leadership Development at health charity The King's Fund, London. There she established a portfolio of interventions including networks, open programmes and thought leadership in medical leadership. She designs and leads a number of international study tours that feature learning from health and non-health organisations that are leading-edge in quality, innovation, healthy cultures and leadership.

Vijaya has published and written a number of papers on leadership development and has influenced thought leadership in the areas of medical engagement, quality improvement in health, equality and diversity, and the importance of advancing women in leadership. She is a visiting professor at Milan's SDA Bocconi School of Management and is a facilitator and chair for Windsor Leadership.

Vijaya was appointed as a Trustee of Windsor Leadership in 2017 and also served as Chair on the Chairs and Facilitators Executive (CAFE). Contemplative Spaces was founded in April 2018.



## Nick Poole

### Chief Executive Officer, CILIP

Before taking over the leadership of CILIP in 2015, Nick was Chief Executive Officer of the Collections Trust where he was responsible for the strategic direction and management of the organisation. In this role, Nick was responsible for developing UK and international standards for information management, advising agencies on digital programmes and leading partnership initiatives with a range of leading digital companies.

Nick was elected to the Board of Wikimedia UK in 2015. He is former Chair of the Europeana Network and provided representation to the European Commission. Prior to joining the Collections Trust in 2005, Nick held a number of roles at the Museums, Libraries and Archives Council, including having responsibility for regional policy development and as a national ICT adviser. Nick is a former Councillor of the Museums Association and the former Chair of the UK part of the International Council of Museums.



## Caroline Taylor

### University Librarian, University of Leicester and Vice-Chair of SCONUL

Caroline has been University Librarian since 2013 when she moved from Nottingham Trent University. Her portfolio at Leicester includes the Leicester Learning Institute (including education development and student learning), archives, records management and information assurance services.

A significant part of Caroline's professional career has been in public libraries and local government where she worked in Essex, Camden, Westminster, Richmond upon Thames and Oxfordshire, where she was County Librarian until 2010. With academic library colleagues in the Midlands, Caroline was instrumental in establishing the Mercian Collaboration (a sub group of SCONUL) and was its first chair, before stepping down in 2017 after three years in the role. She is Chair of SCONUL's Workforce Development Task and Finish Group and a trustee of the National Manuscripts Conservation Trust. Caroline's professional interests include library and learning space design, archives and special collections, open scholarship and leadership and management development.



## Liz Jolly

### Chief Librarian, The British Library

Liz took up the role of Chief Librarian at the British Library in September 2018. She has over twenty years' experience in a variety of institutions in the university sector, most recently as Director of Student and Library Services at Teesside University. Prior to joining Teesside in 2008 Liz was Associate Director in Information and Learning Services at the University of Salford.

An Honorary Professor at Teesside University, Liz is a Principal Fellow of the Higher Education Academy and a Fellow both of CILIP and the Royal Society for the encouragement of Arts, Manufactures and Commerce (RSA). From 2014-2016 she was Chair of SCONUL. A former Trustee of CILIP, Liz is a member of the Editorial Board of the *New Review of Academic Librarianship* and is a former member of the British Library Advisory Council.



## David Sweeney

### Executive Chair, Research England

After gaining First Class Honours in Statistics at the University of Aberdeen, David worked at two Biotechnology and Biological Sciences Research Council research institutes as a consultant statistician before developing mathematical models of plant growth. His work on the computational aspects of this led into broader applications of IT in education and research, and he was Director of Information Services at Royal Holloway, University of London, before moving into university leadership as Vice-Principal (Communications, Enterprise and Research) in 2004. In this role he was responsible for research strategy and for developing Royal Holloway's research-led

commercial and consultancy activities.

He joined HEFCE in 2008 as Director (Research, Innovation and Skills) and led the development and implementation of the first Research Excellence Framework including the new impact agenda element. He was responsible for research policy and funding, knowledge exchange and university/business relations. In May 2017 he was appointed the first Executive Chair of Research England, a new council established as part of UK Research and Innovation (UKRI), alongside the seven disciplinary Research Councils and the UK Innovation Agency. Research England is biggest research funder in the UK with responsibility for university block-grant funding for research and knowledge exchange. In UKRI he has particular responsibilities for Place, Commercialisation and Open Science.

David has been invited to visit many countries to advise on research assessment and funding, particularly with respect to research impact. He is also co-chair of the Implementation Task Force for Plan S, the international initiative on full and immediate open access to research publications. David was awarded an honorary doctorate from the University of Aberdeen in 2012, was Vice-Chancellor's Fellow at the University of Newcastle, Australia in 2015 and is a Fellow of the Royal Statistical Society.

**Come and see the OCLC Fringe Session at 11.45  
on 12 June in the meeting room Central Park**

# 2018 OCLC Open Access Study: Highlights of Findings



**Don't miss your chance to see the  
OCLC Research presentation on the  
findings from the Open Access Survey.**

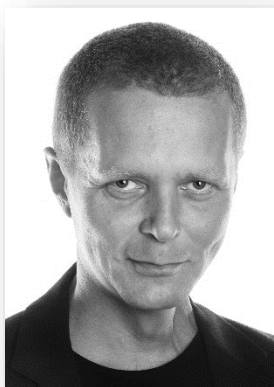
In 2018, OCLC Research conducted a survey on open access and open content to explore the impact and use of these resources in libraries. Hundreds of responses came from 82 countries. Merrilee Proffitt, Senior Manager, OCLC Research, will present the findings of the survey, including how we define open access, what libraries are doing to support it, and what this means from a global standpoint.

**Because what is known must be shared.®**

Learn more at [oclc.org/open](https://oclc.org/open)







## Svein Arne Brygfjeld

Advisor, National Library of Norway

Svein Arne Brygfjeld holds a Master's degree in Computing Science from the Arctic University of Norway, Tromsø. He has extensive experience from a range of sectors including telecoms, healthcare, libraries, archives and museums. He leads the development of the digital library at the National Library of Norway, and he has also taken a central role on digital strategies at the same library. For the last two years he has led the AI lab at the National Library of Norway.



## John Chambers

Chief Executive, Archives and Records Association (UK & Ireland)

John Chambers is Chief Executive of the Archives and Records Association (UK and Ireland), which is the professional and membership body for the archives sector in the United Kingdom and Republic of Ireland. Prior to this role he was Executive Director of the Society of Archivists. He came to the archives world from the UK's charity sector, having previously managed mental health, physical health and advice charities.



## Jill Stevenson

Dean for Equality, Diversity and Inclusion and Head of Student Support Services, University of Stirling

At Stirling, Jill is responsible for leading the creation of a culture where the principles of equality, diversity and inclusion permeate the University's structures, decisions and environment. To achieve this, she works closely with staff, students and key partners. Jill is also the Head of Student Support Services where her role is to provide leadership, direction and support to the team and to oversee the effective, efficient delivery of services with a view to maximising the student experience, retention rates, academic outcomes and graduate

prospects. Recent achievements include leading the development of the first institutional strategy on preventing and tackling sexual violence, including the award winning #isthisok campaign.

Jill's wider background is in policy, strategy, equality and diversity, accessibility, governance and sport. Before joining Stirling, she spent a year as the Accessibility and Inclusion Manager for Glasgow 2014 providing strategic leadership for accessibility, inclusion and equality issues for the Commonwealth Games. She also spent five years as the Equality Director on the Board of Triathlon Scotland. She is a Director of AMOSSHE, the Student Services Organisation where projects have included the review and relaunch of the AMOSSHE Strategy.



## Sue Williamson

### Director, Libraries and Birmingham, Arts Council England

Sue is the Director for Libraries and for Birmingham for Arts Council England. A professional librarian, she has many years' experience in a variety of roles in public libraries, her previous role being Head of Library Services for St. Helens Borough Council.

A vocal and enthusiastic advocate for public libraries and the benefits and possibilities of their role at the heart of the community, Sue has seen at first hand the positive results of programming arts events and activities in libraries. Sue loves all things cultural and is a voracious reader of popular fiction. Now living in central Birmingham, Sue is

embracing the opportunity to immerse herself in the thriving arts and culture scene in the West Midlands and is thankful on a daily basis that she is lucky enough to be paid to indulge her enthusiasms.



## Rumman Chowdhury

### Global Lead for Responsible AI, Accenture Applied Intelligence

Rumman Chowdhury's passion lies at the intersection of artificial intelligence and humanity. She holds degrees in quantitative social science and has been a practicing data scientist and AI developer since 2013. She is currently the Global Lead for Responsible AI at Accenture Applied Intelligence, where she works with C-suite clients to create cutting-edge technical solutions for ethical, explainable and transparent AI.

Rumman has been featured in international media, including the Financial Times, Harvard Business Review, MIT Technology Review, BBC, Axios, Cheddar TV, CRN, The Verge, Fast Company, Quartz, Corriere Della Serra, Optio, Australian Broadcasting Channel and Nikkei Business Times.



## Ann Rossiter

### Executive Director, SCONUL

Ann Rossiter has been the Executive Director of SCONUL since September 2010. She is a member of the SCONUL Board, and serves on a number of external advisory groups, including the Jisc Collections Content Strategy Group and the EThoS Advisory Board.

Ann has spent the majority of her career working in public policy, including as a researcher at the BBC and in Parliament, in consultancy; as director of a think-tank, and as Special Adviser to Rt. Hon John Denham MP on higher education policy. She has edited and contributed to a number of books and pamphlets on public service issues.

## Delegates

alphabetically by surname

Name	Job title	Organisation
Sue Ackermann	Acting Director of Libraries	University of Nottingham
Bethan Adams	Head of Library and Academic Support Services	University of Hertfordshire
Jane Aiken	Deputy Director, Content and Research Support	Teesside University
Richard Aird	Head of Customer Service	University of Stirling
Andrejs Alferovs	Director	Kortext
Lin Amber	Planning and Resources Manager & Acting Deputy Director, Library Services	University of Bristol
Helen Anderson	Academic Sales Manager	Askews and Holts Library Services
James Anthony-Edwards	University Librarian	University of Exeter
David Archer	Head of Library and Archives	London School of Hygiene & Tropical Medicine
Robert Atkinson	Director of Library Services	Birkbeck, University of London
Simon Bains	University Librarian	University of Aberdeen
Nick Barratt	Librarian	Senate House Library, University of London
Alison Baud	Director of Library & Learning Services	Bath Spa University
Lorraine Beard	Interim Head of Research Services & Head of Digital Technologies and Services	The University of Manchester
Gavin Beattie	Associate Director, Research & Impact	King's College London
Rachel Beckett	Head of Engagement and Associate Director of the John Rylands Library and the John Rylands Research Institute	The University of Manchester
Simon Bevan	University Librarian	Cranfield University
Debbi Boden-Angell	Director of Information, Learning and Estate Services	York St John University

## SCONUL Summer Conference and AGM 2019

Name	Job title	Organisation
Frances Boyle	Deputy Director of Library Services	Imperial College London
Phil Brabban	University Librarian and Group Director of Learning Resources	Coventry University
Sandra Bracegirdle	Head of Content, Collections & Discovery	The University of Manchester
Antony Brewerton	Head of Academic Services	University of Warwick
Jason Briddon	Director of Student Success Services	University of the West of England - Bristol
Sara Burnett	Information Specialist	Kingston University
Stella Butler	University Librarian & Keeper of the Brotherton Collection	University of Leeds
Tom Butler	Solutions Architect	SirsiDynix
Colin Carter	Sales Director	Innovative
Lesley Castens	Head of Library & Digital Support	University of Plymouth
Phil Cheeseman	Assistant Director: Academic Services	Lancaster University
Serena Chester	Academic Support Manager (Learning & Teaching)	University of Salford
Pat Christie	Director of Library and Student Support Services	University of the Arts London
Christopher Cipkin	Director of Library, Learning Support & Culture	Royal Holloway University of London
David Clover	Head of User Engagement Library and Learning Services	University of East London
Simon Collins	Information Specialist (SEC)	Kingston University
Ian Corns	Account Sales Manager	Talis
John Cox	University Librarian	National University of Ireland Galway
Gareth Cresswell	Subscriptions Director	Times Higher Education
Sue David	Associate Director Information Services (Library)	St George's, University of London
Helen Davies	Head of Library Services	The Royal Central School of Speech and Drama



Name	Job title	Organisation
Mary Dawson	Director of Library Services	Sheffield Hallam University
Peter Dennison	Head of Customer Service	University College London
Helen Dobson	Assistant Librarian	Manchester Metropolitan University
Tracey Douglas	Sales Administrator	Demco Interiors
Yaz El Hakim	Director of Learning Experience	Kortext
Gary Elliott-Cirigottis	Acting Director of Library Services	The Open University
Andrew Evans	Account Manager	OCLC
Regina Everitt	Director of Library Services	University of East London
Chris Fowler	Head of Library Services and University Librarian	Bournemouth University
Caroline Gale	Library Liaison Manager	University of Exeter
Steve Giannoni	Director of Academic Sales	EBSCO Information Services
Tania Gibson	Director	EBSCO Information Services
Robin Green	Librarian	University of Warwick
Fiona Greig	Head of e-Strategy & Resources	University of Surrey
Neil Grindley	Head of Resource Discovery	Jisc
Andrew Hall	Sales Manager	OCLC
Jane Harvell	Director of Library Services and University Librarian	University of Sussex
John Hennigan	Sales Manager	Innovative
Libby Homer	University Librarian	Anglia Ruskin University
Anne Horn	Director of Library Services & University Librarian	The University of Sheffield
Stuart Hunt	Director ULCS & University Librarian	University of Reading
Jim Huntingford	Head of Library Services	Abertay University
Mark Ingram	Director, EMEA	JoVE
Ruth Jenkins	Director of Library Services	Manchester Metropolitan University
Chris Johnson	Project Sales Manager	Demco Interiors

**(re)Discover**

**iii innovative**

Inspire™ Discovery marks the beginning of a new era for Innovative libraries. As the first module on Inspire, this revolutionary experience gives people the most comprehensive and contextual search results ever available. Discovery uses native linked data to reveal multi-dimensional relationships and uncover new, unexpected connections and ideas.



**See for yourself.**

Start your library's transformation  
by scheduling a demo today.

**sales@iii.com**

**Colin Carter**  
**+44 (0) 7887714867**

Name	Job title	Organisation
Liz Jolly	Chief Librarian	The British Library
Rosie Jones	Director of Student and Library Services	Teesside University
Judith Keene	University Librarian	University of Worcester
Ian Keepin	Assistant Director LCS	University of Birmingham
Louise Koch	Senior Assistant Librarian, Finance & Acquisitions	Manchester Metropolitan University
Alison Lahlafi	University Academic Librarian	University of Bradford
Andy Land	Digital Programmes Manager	The University of Manchester
Alison Little	Associate Director, Learning Strategy & Student Engagement	The University of Sheffield
Roman Lyashenko	Account Manager	JoVE
Alison Mackenzie	Dean of Library and Learning Services	Edge Hill University
Julia Martin	Head of Information Services	Liverpool School of Tropical Medicine
Darlene Maxwell	Head of Library Services	Royal College of Art
Martina McChrystal	Director of Library Services	University of Glasgow
Kathryn McGowan	Contract Director	Reassurance Security Services Ltd
Colette McKenna	Director of Library Services	University College Cork
Cath Morgan	Assistant Director, Information Services	University of Brighton
Ellie Murphy	Head of Academic Liaison and Learning Development	University of Westminster
Joanne Naylor	Resources Management Librarian	Teesside University
Jenelle Negraeff	Administrative Assistant	SCONUL
Sarah Newbold	Assistant Director (Student and Learning) and Acting Deputy Director, Library Services	University of Bristol
SitMui Ng	SCONUL Co-ordinator	SCONUL
Lorraine Noel	Head of Customer Services	University of Huddersfield
Barbara Pacut	Director, EMEA Sales	SirsiDynix
Tim Peers	UK Sales Manager	Kortext

## SCONUL Summer Conference and AGM 2019

Name	Job title	Organisation
Catherine Phillpotts	University Librarian	London Metropolitan University
Doreen Pinfold	Associate Director: Library & Archives	Falmouth Unviersity/FX Plus
Alison Pope	Learning and Information Services Manager	Staffordshire University
Chris Powis	Head of Library & Learning Services, LLS	University of Northampton
Andrew Preater	Director of Library Services	University of West London
Christopher Pressler	University Librarian & Director of The John Rylands Library	The University of Manchester
Kate Price	University Librarian	Queen Mary University of London
Merrilee Proffitt	Senior Manager	OCLC
Dave Puplett	Head of Library Services	University of Greenwich
Paul Reynolds	University Librarian	Keele University
Caroline Riches	Head of Planning and Professional Services	The University of Manchester
Ann Rossiter	Executive Director	SCONUL
Pete Ryan	Director of Library and Learning Resources	Canterbury Christ Church University
Martin Scarrott	Director of Library Services	St Mary's University
Emma Smith	Head of Learning and Research Support	University of Salford
Ian Snowley	Dean & University Librarian	The University of Lincoln
Tracey Stanley	Acting University Librarian	Cardiff University
James Stephens	Library Resources and Research Manager	University of Cumbria
Ruth Stubbings	Deputy Director, Services	SCONUL
Caroline Taylor	University Librarian	University of Leicester
Sarah Thompson	Head of Collections	University of York
Trudy Turner	Assistant Director Library Collections	University of Kent
Laura Unwin	Services Manager	Talis

Name	Job title	Organisation
Oliver Urquhart Irvine	Director of Library and Learning Services	SOAS University of London
Michelle Wake	Sites Library Manager & Senior Librarian	UCL
Monika Walkowska	Academic Account Manager	Askews and Holts Library Services
Liz Waller	Director of Library Services and University Librarian	Durham University
Emma Walton	Director of Library Services	Loughborough University
Rowan Williamson	Associate Director of Library Services, Services & Support	University of the Arts London
Steve Winterson	Head of Marketing, Communications and Customer Services	The University of Manchester
Katy Woolfenden	Head of Teaching, Learning and Students	The University of Manchester
Helen Workman	Director of Learning Resources	Oxford Brookes University

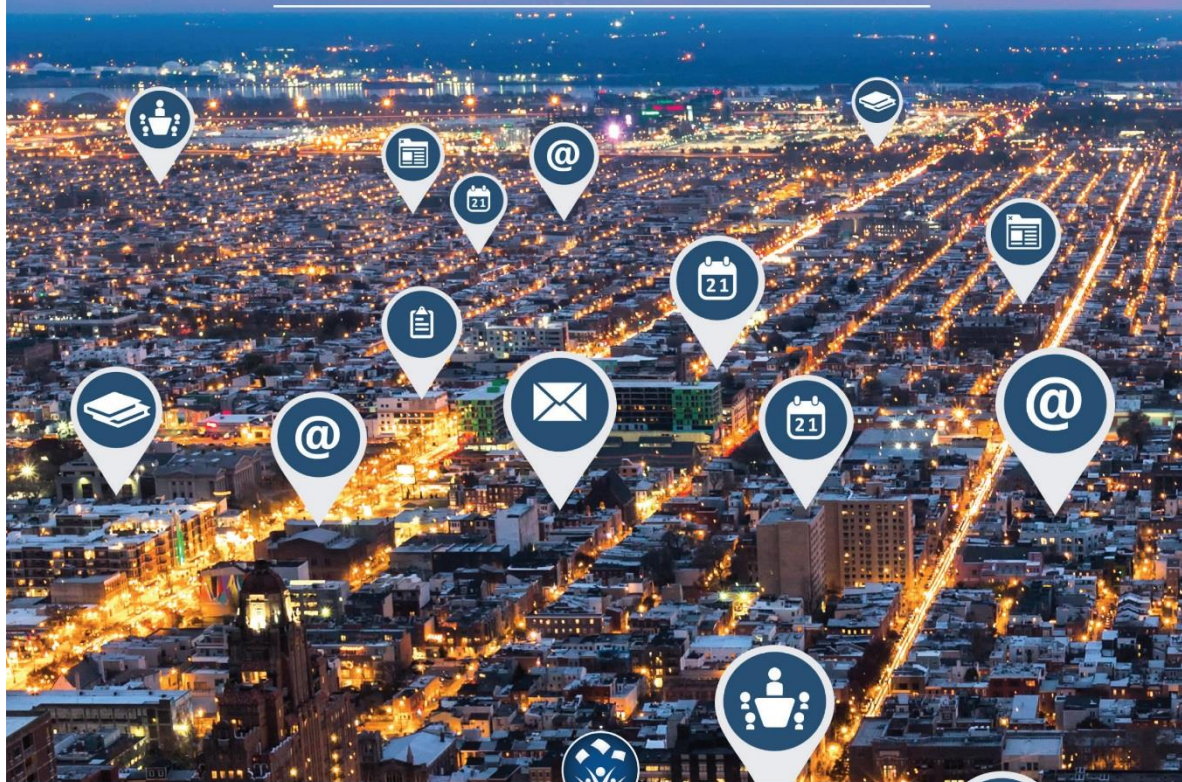


---

*We believe in the*  
**POWER of LIBRARIES**

*At SirsiDynix, we believe in the power of libraries. We know that you provide priceless connections and resources to your communities. We are dedicated to producing software and services that support that mission. If you choose SirsiDynix, you choose a partner who is committed to your library, your mission, and your patrons.*

---



SirsiDynix®

 [sirsiDynix.com](http://sirsiDynix.com)

[linkedin.com/company/sirsiDynix](https://www.linkedin.com/company/sirsiDynix)  
[twitter.com/SirsiDynix](https://twitter.com/SirsiDynix)  
[facebook.com/SirsiDynix](https://facebook.com/SirsiDynix)

## Welcome drinks reception

For delegates arriving in Manchester the evening before the conference, there will be a drinks reception between 6.30pm and 8.00pm. This is a relatively informal event where dress will be smart-casual or business attire. Please feel free to attend for as long as it suits your travel and other arrangements.

The reception is being held in the Terrace room at the Mercure Manchester Piccadilly. There will a selection of hot and cold canapés served, with wine and soft drinks available.



We are very grateful to SirsiDynix for their kind sponsorship which has made this event possible.



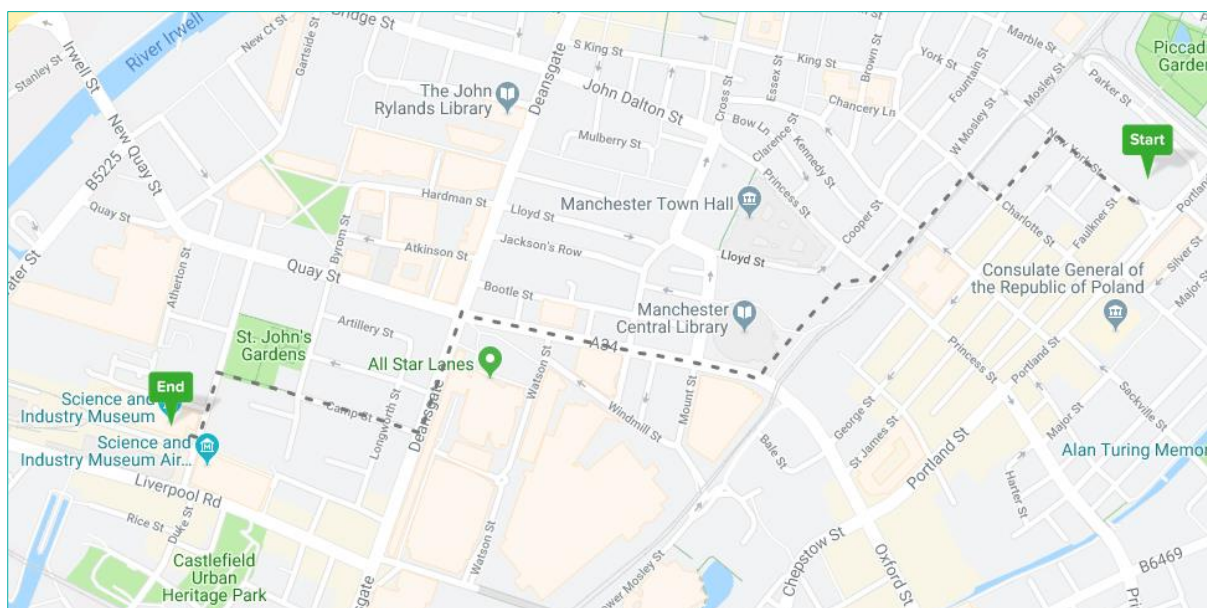
## Informal dinner arrangements

We will also be arranging a series of informal groups to head off to local restaurants following the reception. If you're interested in joining one of these, please make yourself known to a member of SCONUL staff at the reception or beforehand, and we will make sure that you are included.

## Conference dinner

The conference dinner is being held at the Science and Industry Museum, Liverpool Road, Manchester M3 4FP. It is about a 15 minute walk from the conference hotel. A coach has been arranged to take delegates to and from the venue.

Arrangements for dinner	
18.30	Gather in the lobby of the conference hotel
18.40	Coach departs with first group of delegates from the Mercure Manchester Piccadilly Hotel
19.10	Coach returns to pick up second group of delegates from the Mercure Manchester Piccadilly Hotel
19.00	Pre-dinner drinks, Foyer (or Courtyard, weather permitting), Science and Industry Museum
20.00	Move to Revolution Manchester Gallery for dinner
22.00 - 22.30	Close
22.30	Coach departs with first group of delegates from the Science and Industry Museum
23.00	Coach returns to pick up second group of delegates from the Science and Industry Museum





## Dinner menu

### *Starter*

*Crab cakes with chilli and ginger served with watercress and aioli*

*Potato cake topped with Portobello mushroom, tomato,  
spinach and Lancashire cheese (v)*

### *Main Course*

*Lake District beef sirloin, root vegetables and duck fat roasties  
served with homemade Yorkshire pudding and proper gravy*

*Broccoli and Lancashire blue cheese tart with seasonal  
vegetables and potatoes (v)*

### *Dessert*

*Classic glazed lemon tart with mascarpone and  
crushed raspberries*



## Parallel sessions

Time - location	Session
11 June 11.15 am Park Avenue Fourth floor	<b>Collaboration group: AI for libraries: use cases and value propositions</b>  Led by Liz Waller, group Chair and Director of Library & Heritage Collections and University Librarian, Durham; and Nick Barratt, group Vice-Chair and Director, Senate House Library, University of London.
12 June 9.30 am Park Avenue Fourth floor	<p>Developments in artificial intelligence (AI) promise significant opportunities for academic and research libraries and have the potential to impact on virtually every aspect of libraries' work. These new tools and technologies are arriving at an important juncture. There is active debate about how services will need to be reconfigured to take account of the wider range of roles libraries now fulfil for their institutions, a much tighter funding environment and the escalating cost of content.</p> <p>This combination of pull and push factors make consideration of how AI might be used by libraries timely. As part of our new strategy, SCONUL is proposing to undertake a two-year project exploring how member libraries can capitalise on the potential that AI has to offer, based on a use case approach and exploring barriers to adoption; cost-benefit analyses; respective roles for libraries, partners and commercial providers; and ethics.</p> <p>This workshop will consider the following questions:</p> <ol style="list-style-type: none"><li>1. Of the range of new opportunities developing for libraries as a result of AI, which do members see as of most interest in the short and longer terms?</li><li>2. What do members expect their institutions to require of them in terms of supporting AI enabled research and/or teaching?</li><li>3. How might libraries and our own institutions evaluate the benefits of AI technologies?</li><li>4. What concerns do members have about the ethics of using AI in libraries, and what information do you believe you will need to make informed judgements?</li></ol>



**Nick Barratt**  
**Vice-Chair of the SCONUL Collaboration Strategy Group and Director of Senate House Library, University of London**

Dr Nick Barratt was appointed Director of Senate House Library, University of London, in April 2018, having joined in 2015 as Associate Director, Collections and Engagement. He is also a Fellow of the Royal Historical Society, an Honorary Associate Professor of public history at the University of Nottingham, a teaching fellow at the University of Dundee, and sits on the Executive Committee of the Community Archives and Heritage Group. A qualified historian specialising in thirteenth century state finance and fiscal history, he is a published author and, prior to his current position, worked in the media for a number of years.



**Liz Waller**  
**Chair of the SCONUL Collaboration Strategy Group and Director of Library & Heritage Collections and University Librarian, Durham University**

Liz's professional career spans 30 years and has include working in HE colleges, polytechnics and Russell Group libraries. Currently, she leads the Library & Heritage Collections Team at Durham University, so her portfolio is broad. In the past, she has specialised in information literacy, student skills, marketing and building design. Liz has previously been a member of the Transformation Strategy Group and chaired the SCONUL Library Design Awards in 2013 and 2016.

Liz has a strong commitment to collaborative working, and a belief that through cooperation and sharing a stronger future can be built delivering optimum value for all stakeholders. She was part of the Change Academy group which led to the formation of the Northern Collaboration and has recently stepped down as Secretary to the steering group to devote time to the SCONUL Executive Board.

## Security

**We provide experienced, customer focussed staff who deliver more than just security.**

- Weekend / late hours providing additional back up to library staff
- Access control
- Library patrols
- Lock down
- 24/7 cover during exam revision periods
- Flexible cover required – 7 hours + – only pay for the hours you need to cover
- Customer Service – book collection, book shelving, photocopier, self-service machine maintenance, general student assistance
- We can provide staff to integrate with in-house library staff to provide reliable back up on a long term basis helping to cover vacation and sickness cover

*Your flexible partner for library cover*



 **Reassurance**  
Security Services

## Best of both worlds



 **Reassurance**  
Resource Management



## Library Assistants

**Looking for high quality, customer focused evening library staff?**

We provide a reliable out of hours service, with staff managing front-line services and administrative duties.

We can provide high calibre, dedicated and enthusiastic staff who will be fully trained to provide the following services;

- Emptying self-service returns sorter bins/ trolleys and re-sensitizing stock
- Emptying trolleys and shelving/ moving stock
- Assist with directional and initial information enquiries, including assistance with the Online Public Access Catalogue (OPAC) and helping them to find books
- Assist users with the use of copiers and printers and restock paper trays
- Reporting faults
- Keeping the Library space in good order through regular tidying, clearing rubbish, shelving and filing
- Gather and record basic statistics such as head counts

**0845 372 1995**

*Kathryn@reassurancesecurityservices.co.uk*  
*www.reassurancesecurityservices.co.uk*



Time - location	Session
<p>11 June 11.15 am</p> <p>Victoria Park Fourth floor</p>	<p><b>Content group: Plan S - the death of big deal subscriptions?</b></p> <p>Led by Stella Butler, group Chair and University Librarian &amp; Keeper of the Brotherton Collection, University of Leeds, and Chris Pressler, group Vice-Chair and University Librarian and Director of The John Rylands Library, University of Manchester; with Anna Vernon, Head of Licensing, Jisc Collections.</p> <p>Plan S promises to accelerate the shift towards open access in the UK and in other countries where funders have signalled their support for its principles. It is also being considered with interest in countries such as the US and China. Much of the debate to date has focused on the implications for spending on APCs and the future of hybrid journals, but what does this mean for subscription spend?</p> <p>In this workshop, SCONUL and Jisc Collections want to explore with representatives from institutions with a variety of missions what they expect Plan S to mean for their own institution, and what a successful transition to a Plan S compliant environment might look like for them. How can we ensure fairness of access and institutional spend in the future?</p>
<p>12 June 9.30 am</p> <p>Victoria Park Fourth floor</p>	<p><b>Content group: Plan S and transitional deals</b></p> <p>Led by Stella Butler, group Chair and University Librarian and Keeper of the Brotherton Collection, University of Leeds, and Chris Pressler, group Vice-Chair and University Librarian and Director of The John Rylands Library, University of Manchester; with Liam Earney, Director of Licensing, Jisc.</p> <p>UKRI has set out their intention to revise their open access policy in line with the principles set out in Plan S. Details of their policy are likely to be available in the early autumn, but Coalition S is clear that for journals to be compliant, they will need either to be fully open access or to be included in a transformative agreement. Jisc Collections is tasked with negotiating such agreements on our behalf across a range of publishers from Wiley, Taylor &amp; Francis and Elsevier to small society publishers. This workshop will explore how Jisc Collections is planning to approach this challenge and give members scope to discuss the opportunities and challenges that such transitional agreements throw up for them.</p>



**Stella Butler**  
**Chair of the SCONUL Content Strategy Group and**  
**University Librarian & Keeper of the Brotherton**  
**Collection, University of Leeds**

Dr Stella Butler joined the University of Leeds in 2011 as University Librarian & Keeper of the Brotherton Collection. She is a member of the Executive Board of SCONUL and chairs the SCONUL Content Strategy Group. Stella chairs the panel for the Designation Scheme of Arts Council England which aims to identify and celebrate collections of outstanding significance held in museums, libraries and archives across England. She is a member of the Board of Research Libraries UK and was Chair between 2013 and 2015. She chairs the Management Board of White Rose University Press. She is a Patron of the Pankhurst Trust, which secured 62 Nelson Street Manchester, the birthplace of the suffragette movement as a Women's Centre. Stella has published widely on the history of science and medicine and on library and heritage issues.



**Liam Earney**  
**Director of Licensing, Jisc**

Liam Earney is Director of Licensing at Jisc, where he is responsible for the unit undertaking licensing and negotiation of agreements for content and software on behalf of UK universities. Jisc licensing activity covered approximately £150 million of expenditure on content and software in 2018.

Liam has worked at Jisc since 2003, where he has been involved in negotiations for a wide variety of agreements in higher and further education as well as working with the NHS, museums and public libraries in the UK and overseas.

He has been closely involved with and leads the evolution of Jisc's negotiations with publishers in support of open access, in particular how Jisc can best support the sector achieve its aims around pure gold, hybrid and green open access. He is a member of the European Universities Association High Level Group on Big Deals and the OA2020 Advisory Group and was previously a member of the UUK Open Access Coordination Group.



**Christopher Pressler**  
**Vice-Chair of the SCONUL Content Strategy Group and**  
**University Librarian and Director of The John Rylands**  
**Library, The University of Manchester**

Christopher Pressler joined Manchester University in February 2019. Previously he was University Librarian and Director of the Irish Modern Archives Research Centre at Dublin City University. He has also been Director of Libraries at the University of London, University Librarian and Director of e-Learning at the University of Nottingham, and Dean of Libraries at Dartington College of Arts. He has contributed to many boards and collaborative programmes in the UK, Ireland and in Europe for more than fifteen years and has particular interests in open scholarship, digital technologies and special collections.

In recent years, Christopher has authored the UK's National Digitisation Review for Research Libraries UK (RLUK) and, for Ireland's Consortium of National and University Libraries, the first strategy for all of Ireland's research libraries. At London he co-edited two monographs on rare books and special collections and for six years was the Chair of Digital Research in the Humanities and Arts. At Nottingham he established the UK's Centre for Research Communications and at Dublin recently launched DCU Press, Ireland's first open-access university press.

Christopher is also the co-founder and co-chair of DART-Europe, the portal to over 600 European universities' doctoral e-theses from 28 countries.



**Anna Vernon**  
**Head of Licensing, Jisc Collections**

Anna manages Jisc Collections' team of licensing managers and is part of the team leading Jisc's open access and journal negotiations on behalf of UK university libraries. Anna is a member of the SCOAP3 Governing Council and Future Strategy Working Group and works with a number of local and international OA initiatives including the RLUK Open Access Publisher Processes Group, and the ESAC initiative.

She joined Jisc Collections in 2015 from the British Library and has a background in IP law, negotiation and licensing.



***THE* institutional subscriptions**  
**A new way to access *THE*'s daily  
insight, intelligence & data**



**Join us and our rapidly growing network of institutions**

**[www.timeshighereducation.com/subscriptions](http://www.timeshighereducation.com/subscriptions)**



Time - location	Session
11 June 11.15 am Hyde Park Fourth floor	<p><b>Transformation group: Why do our users love our libraries; are we getting it right on digital preservation and other critical questions</b></p>
12 June 9.30 am Hyde Park Fourth floor	<p>Led by Judith Keene, group chair and University Librarian, University of Worcester and Christine Fowler, Head of Library Services and University Librarian, Bournemouth University.</p> <p>The group is currently working on three projects exploring critical issues for the work of member libraries, and are looking for your help in taking these forward.</p> <p><b>First, why do our users love their library?</b>            Increased footfall and growing pressure on library space are well documented phenomena, but why is this? As a community, we may feel we have a good intuitive understanding of the drivers for the increased popularity of our libraries, but what can we point to as evidence for this long-term trend? How can better information help us make the case for long-term investment in our spaces, services and staff? We will be launching a new research project at the conference with Andrew Cox of Sheffield University and will be asking for your help. We want members to share with us any unpublished or grey literature you may have produced for internal purposes which address these questions. Come along to our session to hear more.</p> <p><b>Second, are we getting it right on digital preservation?</b>            The group has been running a pilot among SCONUL members on the status of digital preservation in our libraries: where are we focusing our efforts; who has lead responsibility, and what might be falling through the cracks. Come along to hear the results and contribute the next stage of the discussion, which will focus on what steps we might need to take as a community and what practical tools we might find useful to support us to get it right.</p> <p><b>Third, what are the long-term trends on the balance between print and digital?</b>            What are the relative factors driving the shift from print to digital including financial pressures and the user experience, and how does the UK's experience compare with other parts of the world? SCONUL is designing a project in this area with international partners. Come and hear more and help shape the questions the research will address.</p>



**Chris Fowler**  
**Head of Library Services and University Librarian,**  
**Bournemouth University**

Chris Fowler has been Head of Library Services and University Librarian at Bournemouth University, on the glorious Dorset coast, since 2014. She has followed a career from public libraries to NHS into the defence industry and then into higher education. Her career roles have included defence and aerospace commercial market intelligence, health care library accreditation and Jisc mass digitisation projects. Earlier in her career Chris was also Chair of the University Health & Medical Librarians Group (UHMLG).

At Bournemouth, her current interests include learning development; study skills frameworks and learning space design in a rapidly changing academic library context. Her aspiration is to help co-create library spaces that work every bit as much for the evolving roles of library staff, as for the upcoming Alpha generation of students. Chris is currently working with colleagues on the imminent opening in 2020 of a new health library. She and her team are preparing for a major capital redevelopment of the existing library buildings in the next few years. Chris has been active in SCONUL for a number of years as a member and Chair of the Health Strategy Group. Chris is a member of the SCONUL Transformation Group.



**Judith Keene**  
**Chair of the SCONUL Transformation Strategy Group**  
**and University Librarian, University of Worcester**

After a PhD in Palaeoecology, Judith Keene started her librarianship career at the University of Birmingham and Birmingham City University before moving to the University of Worcester. Her current role (since 2012) is that of University Librarian and a member of the University Executive. She was involved from the outset in the Hive project and has published and given many talks on the subject. The challenges of running a joint library, in partnership with Worcestershire County Council, whilst meeting the developing needs of the University community mean that life is seldom dull.

Judith helped revive the West Midlands branch of what was then the Universities, Colleges and Research libraries group of CILIP and served as its Chair for three years. Currently, she is particularly interested in how libraries can demonstrate their impact. She has been a school governor for over ten years and is a lay minister in the Church of England.

Time - location	Session
11 June 11.15 am Central Park Fourth floor	<p><b>Workforce Development group: The experience of BAME staff working in SCONUL member libraries</b></p>
12 June 9.30 am Central Park Fourth floor	<p>Led by Regina Everitt, Director of Library and Learning Services at University of East London (Tuesday) and by Caroline Taylor, group Chair and University Librarian, University of Leicester (Wednesday), with Dr Mohammed Ishaq, Reader, School of Business and Enterprise, University of the West of Scotland.</p> <p>The lack of ethnic diversity both in the HE sector and in the library profession is well documented. SCONUL, led by our Board, want to work with our members to bring about change and to support them as they endeavour to increase the diversity of their staff. It is the Board's view that we need collectively to "own" the problem of lack of diversity in our own workforces and to have an open and supportive discussion about how to make change happen.</p> <p>The research into the experiences of BAME staff working in our member libraries is part of that work and will be published for the first time at the conference. It will allow members to hear directly the experiences of BAME staff which they may not otherwise be privy to. It should also help the SCONUL community identify the actions required to bring about change, and to consider which interventions may be helpful, and indeed the areas in which those leading teams or services may need information or support.</p>



**Regina Everitt**  
**Director of Library and Learning Services, University of East London**

Regina Everitt began her professional career as a technical author/trainer working with computer companies that developed bespoke software for the manufacturing, pharmaceutical and financial sectors in the US and UK. As a Peace Corps volunteer in Central and West Africa, she taught English as a foreign language and ran a small library and cultural centre. Her experience in the Peace Corps set the scene for her future career as she later transitioned into the HE sector developing and managing libraries, social learning spaces, and other learning resources.

Regina enjoys the mixed portfolio of converged library, IT and other learning support services. In her role at the University of East London she has strategic responsibility for library, archives, and the Centre for Excellence in Learning and Teaching. She was previously Interim Director at SOAS, managing the library, IT service desk, multimedia, and printer services.

Concerned about the low representation of BAME staff members in leadership positions in academic libraries, she co-project managed SCONUL research to document BAME staff experiences in LIS with a view to working with the sector to positively influence the trend. She is also a member of the CILIP Steering Group for the newly-formed Network for BAME Library and Information Professionals as well as a member of the Steering Group for the M25 Consortium of Libraries.

Regina's 'likes' include watching super hero films with her son (Black Panther and Batman are favourites) and 'out-dancing' her son at R&B/Hip Hop concerts. She supports her husband's obsession with golf by accompanying him to resorts where she tends to get as far as the spa.



**Dr Mohammed Ishaq**  
**Reader in Human Resources Management, School of Business and Enterprise, University of the West of Scotland**

Dr Mohammed Ishaq is a Reader in Human Resource Management at the University of the West of Scotland. As an academic he teaches and conducts research into equality and diversity in the public sector with specific emphasis on race, religion and gender. Mohammed has published in a wide range of academic journals as well as undertaken consultancy for the Equality and Human Rights Commission, Scottish Government and SCONUL. Mohammed is also a Fellow of the Chartered Management Institute and a member of the Scottish Football Association's Equality and Diversity Advisory Board as well as other organisations. Mohammed's research is of an applied nature with implications for policies and practices.

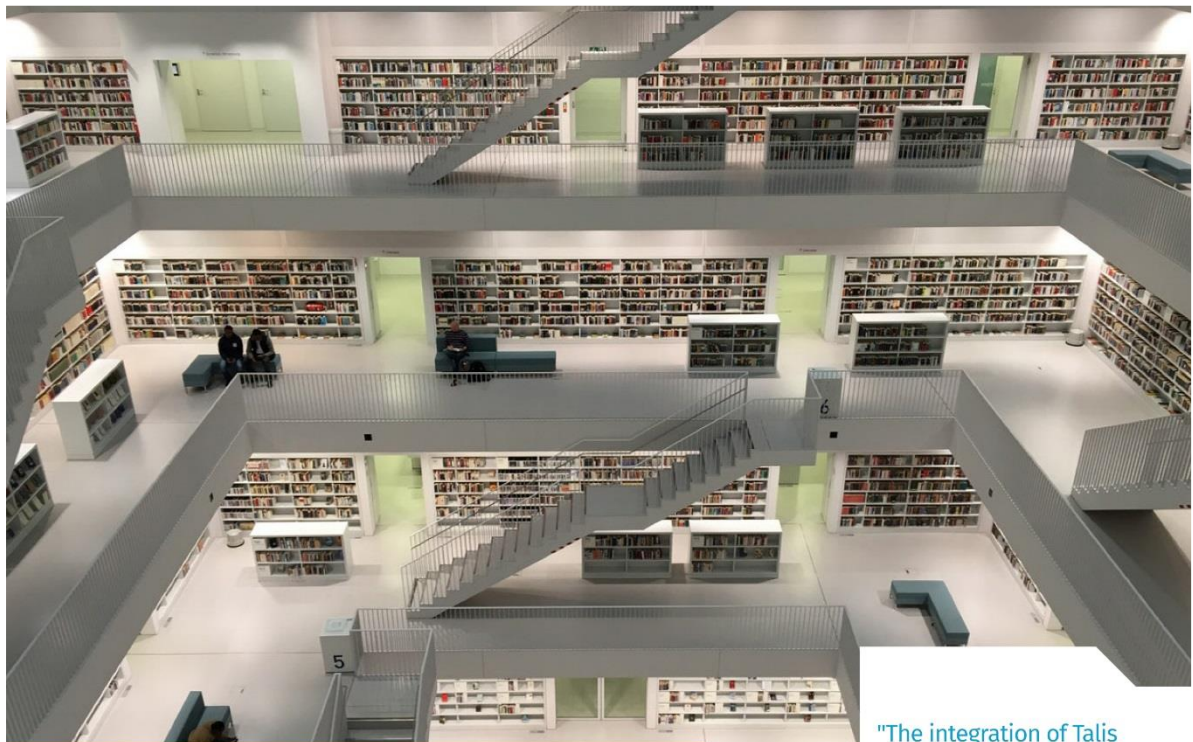


**Caroline Taylor**  
**Chair of the SCONUL Workforce Development Task and Finish Group and University Librarian, University of Leicester**

Caroline has been University Librarian since 2013 when she moved from Nottingham Trent University. Her portfolio at Leicester includes the Leicester Learning Institute (including education development and student learning), archives, records management and information assurance services.

A significant part of Caroline's professional career has been in public libraries and local government where she worked in Essex, Camden, Westminster, Richmond upon Thames and Oxfordshire, where she was County Librarian until 2010. With academic library colleagues in the Midlands, Caroline was instrumental in establishing the Mercian Collaboration (a sub group of SCONUL) and was its first chair, before stepping down in 2017 after three years in the role. She is Chair of SCONUL's Workforce Development Task and Finish Group and a trustee of the National Manuscripts Conservation Trust. Caroline's professional interests include library and learning space design, archives and special collections, open scholarship and leadership and management development.





## Deliver student satisfaction through...

"The integration of Talis Aspire with Askews & Holts has been a huge time saver for the team completing reviews."

Ted Splisbury,  
Collections Support Librarian (University of the West of England)

5 day supply of print books with...

**Askews Shelf Ready Service.**

Increasing the number of eBooks available whilst reducing the cost per access, through...

**Askews market leading PDA/PDA+ solution.**

Streamlining the purchasing process with...

**Askews EDI/API acquisitions solutions.**

STOCK

SERVICE

SOLUTIONS

T: +44 (0) 1772 298 021

academic@askewsandholts.com  
www.askewsandholts.com / www.vlebooks.com

@AskewsAcademic

## Tuesday 11 June

Collaboration group: AI for libraries: use cases and value propositions

Park Avenue, Fourth floor

Led by Liz Waller, group Chair and Nick Barratt, group Vice-Chair

Name	Job Title	Institution
Sue Ackermann	Acting Director of Libraries	University of Nottingham
Richard Aird	Head of Customer Service	University of Stirling
James Anthony-Edwards	University Librarian	University of Exeter
Robert Atkinson	Director of Library Services	Birkbeck, University of London
Alison Baud	Director of Library & Learning Services	Bath Spa University
Simon Bevan	University Librarian	Cranfield University
Phil Cheeseman	Assistant Director: Academic Services	Lancaster University
David Clover	Head of User Engagement Library and Learning Services	University of East London
Simon Collins	Information Specialist (SEC)	Kingston University
Gary Elliott-Cirigottis	Acting Director of Library Services	The Open University
Chris Fowler	Head of Library & Learning Support	Bournemouth University
Caroline Gale	Library Liaison Manager	University of Exeter
Robin Green	Librarian	University of Warwick
Neil Grindley	Head of Resource Discovery	Jisc
Stuart Hunt	Director ULCS & University Librarian	University of Reading
Jim Huntingford	Head of Library Services	Abertay University
Andy Land	Digital Programmes Manager	The University of Manchester
Alison Mackenzie	Dean of Library and Learning Services	Edge Hill University
Sarah Newbold	Assistant Director (Student and Learning) and Acting Deputy Director, Library Services	University of Bristol
Lorraine Noel	Head of Customer Services	University of Huddersfield
Alison Pope	Learning and Information Services Manager	Staffordshire University
Merrilee Proffitt	Senior Manager	OCLC
Trudy Turner	Assistant Director Library Collections	University of Kent
Rowan Williamson	Associate Director of Library Services, Services & Support	University of the Arts London
Helen Workman	Director of Learning Resources	Oxford Brookes University

Content group: Plan S: the death of big deal subscriptions?

Victoria Park, Fourth floor

Led by Stella Butler, group and Chris Pressler, group Vice-Chair

Name	Job Title	Institution
Bethan Adams	Head of Library and Academic Support Services	University of Hertfordshire
Jane Aiken	Deputy Director Content and Research Support	Teesside University
Lorraine Beard	Interim Head of Research Services & Head of Digital Technologies and Services	The University of Manchester
Debbi Boden-Angell	Director of ILE	York St John University
Jason Briddon	Director of Student Success Services	University West of England - Bristol
Sara Burnett	Information Specialist	Kingston University
Lesley Castens	Head of Library & Digital Support	University of Plymouth
Christopher Cipkin	Director of Library, Learning Support & Culture	Royal Holloway University of London
Sue David	Associate Director Information Services (Library)	St George's, University of London
Mary Dawson	Director of Library Services	Sheffield Hallam University
Fiona Greig	Head of e-Strategy & Resources	University of Surrey
Jane Harvell	Director of Library Services and University Librarian	University of Sussex
Libby Homer	University Librarian	Anglia Ruskin University
Ian Keepin	Assistant Director LCS	University of Birmingham
Alison Lahlaf	University Academic Librarian	University of Bradford
Julia Martin	Head of Information Services	Liverpool School of Tropical Medicine
Darlene Maxwell	Head of Library Services	Royal College of Art
Ellie Murphy	Head of Academic Liaison and Learning Development	University of Westminster
Paul Reynolds	University Librarian	Keele University
Martin Scarrott	Director of Library Services	St Mary's University
James Stephens	Library Resources and Research Manager	University of Cumbria
Sarah Thompson	Head of Collections	University of York
Emma Walton	Director of Library Services	Loughborough University

Transformation group: Why do our users love our libraries; are we getting it right on digital preservation and other critical questions

Hyde Park, Fourth floor

Led by *Judith Keene*, group Chair and *Christine Fowler*, group member

Name	Job Title	Institution
Rachel Beckett	Head of Engagement and Associate Director of the John Rylands Library and the John Rylands Research Institute	The University of Manchester
John Cox	University Librarian	National University of Ireland Galway
Yaz El Hakim	Director of Learning Experience	Kortext
Judith Keene	University Librarian	University of Worcester
Colette McKenna	Director of Library Services	University College Cork
Tim Peers	UK Sales Manager	Kortext
Catherine Phillipotts	University Librarian	London Metropolitan University
Doreen Pinfold	Associate Director: Library & Archives	Falmouth Unviersity/FX Plus
Oliver Urquhart Irvine	Director of Library and Learning Services	SOAS University of London

# Talis Aspire



## A robust, reliable and proven service

Enhancing teaching and learning  
in over 100 institutions across the globe

- Get meaningful reporting analytics
- Share and engage with digital resources in a universal player
- Improve acquisition efficiency
- Streamline copyright management workflows
- Enhance the student experience with easy access to resources
- Contribute to your institutional Learning Analytics agenda

Come and talk to us about how  
you can enhance your digital  
teaching and learning strategy.

☎ +44 (0) 121 374 2740

🏠 talis.com

🐦 @talis

# talis



Workforce development group: Research into the experience of BAME staff in academic libraries

**Central Park, Fourth floor**

*Led by Regina Everitt, group member with Dr Mohammed Ishaq*

Name	Job Title	Institution
Lin Amber	Planning and Resources Manager & Acting Deputy Director, Library Services	University of Bristol
David Archer	Head of Library and Archives	London School of Hygiene & Tropical Medicine
Frances Boyle	Deputy Director of Library Services	Imperial College London
Phil Brabban	University Librarian and Group Director of Learning Resources	Coventry University
Antony Brewerton	Head of Academic Services	University of Warwick
Pat Christie	Director of Library and Student Support Services	University of the Arts London
Helen Davies	Head of Library Services	The Royal Central School of Speech and Drama
Peter Dennison	Head of Customer Service	University College London
Ruth Jenkins	Director of Library Services	Manchester Metropolitan University
Liz Jolly	Chief Librarian	The British Library
Alison Little	Associate Director, Learning Strategy & Student Engagement	The University of Sheffield
Chris Powis	Head of Library & Learning Services, LLS	University of Northampton
Andrew Preater	Director of Library Services	University of West London
Kate Price	University Librarian	Queen Mary University of London
Dave Puplett	Head of Library Services	University of Greenwich
Pete Ryan	Director of Library and Learning Resources	Canterbury Christ Church University
Ian Snowley	Dean & University Librarian	The University of Lincoln
Caroline Taylor	University Librarian	University of Leicester
Katy Woolfenden	Head of Teaching, Learning and Students	The University of Manchester



### Expert Insights from Top Business Minds

Available for the first time in a subscription format, the Harvard Business Review Press collection includes the publisher's complete catalogue of e-books, offering more than 600 existing titles, plus new e-books added each year in January.



### HBR's Best of the Best

- *Leading the Life You Want*
- *HBR Must Reads on Emotional Intelligence*
- *The First 90 Days, Updated and Expanded*
- *HBR Guide to Building Your Business Case*
- *The Founder's Mentality: How to Overcome the Predictable Crises of Growth*
- *Why Should Anyone Work Here?: What It Takes to Create an Authentic Organization*
- *Talent Wins: The New Playbook for Putting People First*
- *HBR Guide to Dealing with Conflict*
- *Strategy That Works: How Winning Companies Close the Strategy-to-Execution Gap*
- *Entering StartUpLand: An Essential Guide to Finding the Right Job*
- *Build an A-Team: Play to Their Strengths and Lead Them Up the Learning Curve*
- *Harvard Business Review Manager's Handbook*
- *Mindfulness (HBR Emotional Intelligence Series)*

### Subjects Covered

- Innovation
- Leadership
- Management
- Strategy
- Technology

### Skills Promoted

- Change
- Communication
- Delegating
- Influencing others
- Managing teams
- Negotiation
- Strategic thinking

For more information, visit [www.ebscohost.com/ebooks](http://www.ebscohost.com/ebooks).

To request a title list or for a free trial, contact your EBSCO sales account manager.

## Wednesday 12 June

Collaboration group: AI for libraries: use cases and value propositions

Park Avenue, Fourth floor

Led by Liz Waller, group Chair and Nick Barratt, group Vice-Chair

Name	Job Title	Institution
Jane Aiken	Deputy Director Content and Research Support	Teesside University
Andrejs Alferovs	Director	Kortext
Helen Anderson	Academic Sales Manager	Askews and Holts Library Services
Lorraine Beard	Interim Head of Research Services & Head of Digital Technologies and Services	The University of Manchester
Debbi Boden-Angell	Director of ILE	York St John University
Frances Boyle	Deputy Director of Library Services	Imperial College London
Antony Brewerton	Head of Academic Services	University of Warwick
Lesley Castens	Head of Library & Digital Support	University of Plymouth
Christopher Cipkin	Director of Library, Learning Support & Culture	Royal Holloway University of London
Peter Dennison	Head of Customer Service	University College London
Andrew Evans	Account Manager	OCLC
Libby Homer	University Librarian	Anglia Ruskin University
Liz Jolly	Chief Librarian	The British Library
Judith Keene	University Librarian	University of Worcester
Alison Lahlafi	University Academic Librarian	University of Bradford
Alison Little	Associate Director, Learning Strategy & Student Engagement	The University of Sheffield
Ellie Murphy	Head of Academic Liaison and Learning Development	University of Westminster
Joanne Naylor	Resources Management Librarian	Teesside University
Barbara Pacut	Director, EMEA Sales	SirsiDynix
Doreen Pinfold	Associate Director: Library & Archives	Falmouth University/FX Plus
Chris Powis	Head of Library & Learning Services, LLS	University of Northampton
Dave Puplett	Head of Library Services	University of Greenwich
Paul Reynolds	University Librarian	Keele University
Pete Ryan	Director of Library and Learning Resources	Canterbury Christ Church University

## SCONUL Summer Conference and AGM 2019

Name	Job Title	Institution
Ian Snowley	Dean & University Librarian	The University of Lincoln
Tracey Stanley	Acting University Librarian	Cardiff University
James Stephens	Library Resources and Research Manager	University of Cumbria
Steve Winterson	Head of Marketing, Communications and Customer Services	The University of Manchester

Content group: Plan S and transitional deals

**Victoria Park, Fourth floor**

*Led by Stella Butler, group Chair and Chris Pressler, group Vice-Chair with Liam Earney*

Name	Job Title	Institution
Sue Ackermann	Acting Director of Libraries	University of Nottingham
Richard Aird	Head of Customer Service	University of Stirling
Lin Amber	Planning and Resources Manager & Acting Deputy Director, Library Services	University of Bristol
Robert Atkinson	Director of Library Services	Birkbeck, University of London
Alison Baud	Director of Library & Learning Services	Bath Spa University
Rachel Beckett	Head of Engagement and Associate Director of the John Rylands Library and the John Rylands Research Institute	The University of Manchester
Sandra Bracegirdle	Head of Content, Collections & Discovery	The University of Manchester
Pat Christie	Director of Library and Student Support Services	University of the Arts London
David Clover	Head of User Engagement Library and Learning Services	University of East London
John Cox	University Librarian	National University of Ireland Galway
Helen Davies	Head of Library Services	The Royal Central School of Speech and Drama
Gary Elliott-Cirigottis	Acting Director of Library Services	The Open University
Chris Fowler	Head of Library & Learning Support	Bournemouth University
Caroline Gale	Library Liaison Manager	University of Exeter
Fiona Greig	Head of e-Strategy & Resources	University of Surrey
Anne Horn	Director of Library Services & University Librarian	The University of Sheffield
Jim Huntingford	Head of Library Services	Abertay University
Ruth Jenkins	Director of Library Services	Manchester Metropolitan University
Alison Mackenzie	Dean of Library and Learning Services	Edge Hill University
Colette McKenna	Director of Library Services	University College Cork
Andrew Preater	Director of Library Services	University of West London



## SCONUL Summer Conference and AGM 2019

Name	Job Title	Institution
Caroline Riches	Head of Planning and Professional Services	The University of Manchester
Oliver Urquhart Irvine	Director of Library and Learning Services	SOAS University of London
Katy Woolfenden	Head of Teaching, Learning and Students	The University of Manchester
Helen Workman	Director of Learning Resources	Oxford Brookes University

Transformation group: Why do our users love our libraries; are we getting it right on digital preservation and other critical questions

**Hyde Park, Fourth floor**

*Led by Judith Keene, group Chair and Chris Fowler, group member*

Name	Job Title	Institution
David Archer	Head of Library and Archives	London School of Hygiene & Tropical Medicine
Nick Barratt	Librarian	University of London, Senate House Library
Gavin Beattie	Associate Director, Research & Impact	King's College London
Phil Brabban	University Librarian and Group Director of Learning Resources	Coventry University
Phil Cheeseman	Assistant Director: Academic Services	Lancaster University
Sue David	Associate Director Information Services (Library)	St George's, University of London
Mary Dawson	Director of Library Services	Sheffield Hallam University
Robin Green	Librarian	University of Warwick
Neil Grindley	Head of Resource Discovery	Jisc
Ian Keepin	Assistant Director LCS	University of Birmingham
Julia Martin	Head of Information Services	Liverpool School of Tropical Medicine
Martina McChrystal	Director of Library Services	University of Glasgow
Sarah Newbold	Assistant Director (Student and Learning) and Acting Deputy Director, Library Services	University of Bristol
Martin Scarrott	Director of Library Services	St Mary's University
Sarah Thompson	Head of Collections	University of York
Emma Walton	Director of Library Services	Loughborough University

# The Library Design Specialist



- INTERIOR DESIGN • PRODUCT DEVELOPMENT • PROJECT MANAGEMENT
- INTERIORS FIT OUT • CONSULTANCY • SPACE PLANNING • PEDAGOGY • FF & E

demcointeriors



T: 01992 454600  
enquiries@demcointeriors.co.uk  
www.demcointeriors.co.uk

Workforce Development group: Research into the experience of BAME staff in academic libraries

**Central Park, Fourth floor**

*Led by Caroline Taylor, group Chair with Dr Mohammed Ishaq*

Name	Job Title	Institution
Bethan Adams	Head of Library and Academic Support Services	University of Hertfordshire
James Anthony-Edwards	University Librarian	University of Exeter
Jason Briddon	Director of Student Success Services	University West of England - Bristol
Sara Burnett	Information Specialist	Kingston University
Simon Collins	Information Specialist (SEC)	Kingston University
Jane Harvell	Director of Library Services and University Librarian	University of Sussex
Stuart Hunt	Director ULCS & University Librarian	University of Reading
Darlene Maxwell	Head of Library Services	Royal College of Art
Lorraine Noel	Head of Customer Services	University of Huddersfield
Tim Peers	UK Sales Manager	Kortext
Catherine Phillpotts	University Librarian	London Metropolitan University
Caroline Taylor	University Librarian	University of Leicester
Trudy Turner	Assistant Director Library Collections	University of Kent
Rowan Williamson	Associate Director of Library Services, Services & Support	University of the Arts London

## Fringe

Tuesday 11 June, 15.15

Speakers	What's it all about	Location
<b>The British Library Fringe</b> <b>UKRR – The next chapter</b>		
<p><b>Alison Selina</b> Document Supply Manager, The British Library</p> <p><b>Suzy Robinson</b> Business Analyst, UKRR</p>	<p>The British Library is one of the greatest research libraries in the world. It holds in excess of 150 million items, from original print newspapers to manuscripts, books, sound recordings and a large collection of print journals. The collaboration between the British Library, UK HE and (formerly) the Higher Education Funding Council for England set the ambitious target of saving 100km of shelf space within university libraries by de-duplicating low use print journals on the premise that a master, accessible copy is held within the BL.</p> <p>The eleven year project has subsequently delivered 128km of library shelf space amounting to circa £23 million capital saving and circa £2.2 million operational savings p.a. and is now preparing to transition to a BL-run service. This workshop will set out what next for UKRR.</p>	<p><b>Victoria Park</b> Fourth floor</p>
<b>CILIP Fringe</b> <b>Diversifying the Library and Information Workforce – Apprenticeships &amp; CPD</b>		
<p><b>Nick Poole</b> CEO, CILIP</p>	<p>CILIP has published a Workforce Strategy for the Library and Information profession (<a href="https://www.cilip.org.uk/page/WorkforceDevelopment">https://www.cilip.org.uk/page/WorkforceDevelopment</a>), which includes a long-term commitment to opening up and diversifying the UK workforce. Our aim is to work with employers to support the creation of more and better jobs for librarians and information professionals and to attract, retain and develop diverse talent in the profession.</p> <p>Since 2017, we have begun to develop a more open and inclusive definition of what constitutes professionalism, focused on helping people to develop their skills and future-proof their careers. As part of this work, we have led the development of a Level 3 Apprenticeship standard for library, museum and archive assistants. In this workshop, we would like to:</p> <ul style="list-style-type: none"> <li>• explore the current definition of 'professionalism' in our sector and its relevance to the workforce</li> <li>• consider the demand for Level 3 library and information apprenticeships in HE and academic libraries</li> <li>• evaluate the demand for higher-level apprenticeships in HE and academic libraries.</li> </ul>	<p><b>Central Park</b> Fourth floor</p>



Speakers	What's it all about	Location
<p><b>Innovative Fringe</b>  <b>Ease of use vs trust – The challenges of library discovery platforms</b></p>		
<p><b>Colin Carter</b>            Sales Director,            Europe and Africa            Innovative</p>	<p>Innovative recently published a research paper analysing the tools that academic researchers use to discover the resources for their research. This highlighted some challenging results in relation to the use of library discovery platforms and the trust that is associated with not being able to use these platforms. Colin will explore the findings of this research paper and will also provide an introduction to work that is being carried out to develop a new, context-based, discovery application at Innovative and why this will transform the user experience.</p>	<p><b>Hyde Park</b>            Fourth floor</p>

## Fringe

Wednesday 12 June, 11.45

Speakers	What's it all about	Location
<b>Jisc Fringe</b> <b>The future of managing research outputs – working with the sector</b>		
<b>Dr Tamsin Burland</b> Senior co-design manager Digital Futures, Jisc	The need to have oversight and manage the whole portfolio of research outputs (articles, data, theses, software etc.) is becoming more pressing for universities. This is in part driven by funder mandates (including Plan S), but also by open research initiatives, such as FAIR and guidelines for new generation repositories. In this workshop, we will feed back to the sector on recent outreach work undertaken by Jisc on research data management and open access practices. We will also present Jisc's current and planned development work around repositories. We will then take a look at current open access workflows and pain points, discuss what is required as we transition to new practices and systems, and invite input from practitioners.	<b>Victoria Park</b> Fourth floor
<b>Kortext Fringe</b> <b>Increasing access to international markets through digital and distance learning experiences: Partnerships for growth</b>		
<b>Yaz El Hakim</b> Director of Learning Experience, Kortext	A recent <a href="#">report by UUKi</a> (2018), showed almost 50% of international students studying for UK qualifications were studying remotely through Trans-National Education (TNE) rather than physically in the UK. In fact, since 2008-2009, the only growth in international students has been through TNE. With the challenges facing HE domestically, as well as the opportunities created by globalisation, a new school of thought is gathering pace. Examining the need for world-class digital learning experiences, content and learning pathways in order to increase access into global markets. The creation of a single digital reading experience and a personal digital library allows learning insights to support learners anywhere in the world. This session investigates how institutions can create powerful and inclusive learning experiences, accessible anytime, anywhere.	<b>Hyde Park</b> Fourth floor

Speakers	What's it all about	Location
<b>OCLC Fringe</b> <b>The costs of "open": preliminary results from a global OCLC survey</b>		
<b>Merrilee Proffitt</b> Senior Manager OCLC Research	<p>Despite growing support for Open Science, Open Access, and Open Government Information, measures of impact, investment, and cost for libraries and research organisations remain largely unknown. In order to better understand this landscape, OCLC conducted a survey in 2018 that focused on libraries' ambitions, realities, and investments in support of open content. This survey represents a significant early effort to qualify and quantify library efforts in the field of open content at an international scale, and it collected data on library open content activities across multiple internal silos, including: e-resources management, institutional repositories, CRIS systems, digitised heritage collections, data archives, born-digital (legal) deposit, and more. The survey received more than 700 responses from 82 countries, with 72 percent of the responses coming from research and library institutions, providing a rich sample.</p> <p>In this presentation, we will examine definitions of "open" and share preliminary findings on library investments, assessments and planning, leading participants in a discussion about the implications for our global and connected future, as well as opportunities for collective action.</p>	<b>Central Park</b> Fourth floor



**JOIN US IN  
THE TERRACE**

## **VIDEO RESOURCES FOR SCIENTIFIC RESEARCH AND EDUCATION**

CHECK JOVE FIRST  
**WWW.JoVE.COM**

JOVE CREATES SCIENTIFIC VIDEOS FOR TWO UNIQUE RESOURCES: JOVE VIDEO JOURNAL (FOR THE LAB) AND JOVE SCIENCE EDUCATION LIBRARY (FOR THE CLASSROOM)

### **JOVE VIDEO JOURNAL**

**THE FIRST PEER-REVIEWED SCIENTIFIC  
VIDEO JOURNAL**

### **JOVE SCIENCE EDUCATION**

**VIDEOS THAT TEACH KEY CONCEPTS AND  
TECHNIQUES IN STEM**

#### **JOVE BOOSTS AN EXPERIMENT'S SUCCESS TO 95%**

“ It shows everything that was used for the protocol. It can actually bring other researchers to the point where they can, in their laboratory, get the same results that we were getting in the JoVE publication. ”

**MARILENE PAVAN**  
DAMP LAB MANAGER  
Boston University

#### **JOVE PROMOTES UNDERGRADUATE SUCCESS**

“ While there is a plethora of video content available on YouTube and other platforms, the quality is variable, and many videos are aimed at a more general, non-scientific audience. It's great to steer students to high-quality, relevant videos at the right level. ”

**SHONA MCQUILKEN**  
LECTURER IN HUMAN LIFE SCIENCES  
University of Glasgow

**WWW.JoVE.COM**

## Our sponsors

### Askews and Holts Library Services Ltd

Askews Academic supply shelf ready print, eBook and multimedia services to FE and HE institutions.

Through our partnership with our sister company, Gardners Books, the UK's largest book wholesaler, our well-managed and efficient supply chain delivers swiftly to help libraries meet the ever increasing expectations of students.

Our eBook service, VLeBooks, provides a market leading solution to eBook purchasing, saving libraries both time and money.

Providing the highest standard of customer care is our priority. UK based for over 140 years, our dedicated academic team are always on hand to provide support and advice to libraries.

Find us in the Terrace room.

### Demco Interiors

We design and furnish exciting and motivating library interiors that place students at the very heart of creative learning and thinking. We were the library design and FF&E consultants for award winning projects - The Library of Birmingham; The Hive, Europe's first combined university and public library; University of Chichester; Central St Martin's; and the ground-breaking new University of Cyprus library.

Our design and creative space planning capabilities are highly valued by contractors, architects and designers while our FF&E service includes high quality, high performance furnishings, and systems designed and developed by us. Investing in the future of building design we are BIM Level 2 compliant for our Cantilibra and Mode library shelving.

Find us in the Terrace room.



[www.askewsandholts.com](http://www.askewsandholts.com)

Jaqui Holborn  
Academic Development Co-ordinator

Askews and Holts Library Services Ltd  
218-222 North Road  
Preston  
Lancs PR1 1SY

E: [academic@askewsandholts.com](mailto:academic@askewsandholts.com)  
T: 01772 555947

### demcointeriors

[www.demcointeriors.co.uk](http://www.demcointeriors.co.uk)

Jonathan Lord  
Head of Sales

Demco Interiors  
Express Park  
Shipton Way  
Rushden  
Northants NN10 6GL

E: [j.lord@demcointeriors.co.uk](mailto:j.lord@demcointeriors.co.uk)  
T: 01992 454 560  
M: 07710 086 200



### EBSCO Information Services

EBSCO is a leading provider of content and technology for all libraries and academic research institutions. Our portfolio includes EBSCO Discovery Service™ (EDS) which is used in over 10,000 Libraries around the world, EBSCOnet®, our online serials management portal, EBSCOhost®, the world's premier online research service including full-text databases, subject indexes, digital archives, and eBooks. More recent additions to our product family include GOBI Library Solutions (Print and eBook acquisition management tool) and Flipster, our digital replica magazine platform. EBSCO serves the needs of researchers by investing time and resources in the development of 'open' technologies such as LISTA, Open Dissertations and more latterly, FOLIO.

Find us in the Terrace room.

### Innovative

Innovative provides leading technology solutions and services that empower libraries and enrich their users worldwide. With one of the most comprehensive portfolios of library automation products on the market, we serve academic, public, national, corporate and special libraries and consortia in 66 countries worldwide.

Find us in the Terrace room and see us at our Fringe meeting.

# EBSCO

[www.ebsco.com](http://www.ebsco.com)

Steve Giannoni  
Director of Sales (Academic), UK  
& Ireland

EBSCO  
6<sup>th</sup> Floor, Civic Centre  
Silver Street  
Enfield  
Middlesex EN1 3XA

T: 07917 838745  
Twitter: @EBSCOUK

The logo for iii innovative, featuring three vertical bars of increasing height to the left of the word "innovative" in a lowercase, sans-serif font.

[www.iii.com](http://www.iii.com)

Contact: Colin Carter

E: [ccarter@iii.com](mailto:ccarter@iii.com)  
T: 07887 714867

## JoVE

JoVE is the leading producer and publisher of videos that increase the productivity and efficacy of scientific, medical, and engineering research and education. Since its founding in 2006, JoVE has produced nearly 10,000 video articles, demonstrating experiments filmed in laboratories at top research institutions, and delivered online to millions of scientists, educators, and students worldwide. Today, JoVE has 1,000-plus institutional subscribers, including biotech and pharmaceutical companies, and universities and colleges. Among the latter are leading institutions, such as Harvard, MIT, Yale, Stanford, Princeton, University of Cambridge, ETH Zurich, University of Melbourne, University of Tokyo, and Tsinghua University. Please visit [www.jove.com](http://www.jove.com) to learn more.

Find us in the Terrace room.

## Kortext

Kortext is a world-leading digital textbook and personal study platform providing access to over 500,000 etextbooks from over 1,000 publishers, as well as the ability to download OER content, course packs, lecture notes, presentation slides and other materials. Students can also annotate, view interactive content and collaborate with peers, meaning they can connect with content in a more engaging manner. Kortext also provides analytics dashboards, which can give deeper insights into learning habits, inform decision making and help create personalised learning paths.

The platform is being adopted by institutions and governments worldwide to help learners study anytime, anywhere.

Find us in the Terrace room and see us at our Fringe meeting.



[www.jove.com](http://www.jove.com)

Roman Lyashenko  
Account Manager

JoVE  
1 Primrose Street  
London EC2A 2EX

E: [roman.lyashenko@jove.com](mailto:roman.lyashenko@jove.com)  
T: 020 7190 9653



[www.Kortext.com](http://www.Kortext.com)

Kevin Watt  
Director of Academic  
Engagement

Kortext  
Avalon  
26-32 Oxford Road  
Bournemouth BH8 8EZ

E: [kevinw@kortext.com](mailto:kevinw@kortext.com)  
T: 07590 834506

## OCLC

OCLC is a non-profit global library cooperative providing shared technology services, original research and community programs so that libraries can better fuel learning, research and innovation. Through OCLC, member libraries cooperatively produce and maintain WorldCat, the most comprehensive global network of data about library collections and services. Libraries gain efficiencies through OCLC's WorldShare, a complete set of library management applications and services built on an open, cloud-based platform. It is through collaboration and sharing of the world's collected knowledge that libraries can help people find answers they need to solve problems. Together as OCLC, member libraries, staff and partners make breakthroughs possible.

**Find us in the Terrace room and see us at our Fringe meeting.**

## Reassurance Security Services Ltd Reassurance Resource Management Ltd

The best of both worlds; security and library assistants providing an enhanced level of customer service to your student base throughout the academic year.

The combination of a unique staffing option, working in tandem, has created a niche market for a superior out of hour's service to university libraries.

We provide flexible, cost effective and bespoke services to the university sector, creating added value options to increase the usage of your library space during the out of hours opening.

Interested in finding out more? Please visit the stand for a chat!

**Find us in the Terrace room.**



<https://oc.lc/sconul19>

Andrew Hall  
Sales Manager, United Kingdom  
and Ireland

OCLC  
City Gate  
8 St Mary's Gate  
Sheffield S1 4LW

E: [uk@oclc.org](mailto:uk@oclc.org)  
T: 0114 267 7500



[www.reassuranceresourcemanagement.co.uk](http://www.reassuranceresourcemanagement.co.uk) or  
[www.reassurancesecurityservices.co.uk](http://www.reassurancesecurityservices.co.uk)

Kathryn McGowan  
Contract Director  
Reassurance Security Services  
Limited  
Ground Floor, Bishops Court  
17A The Broadway  
Old Hatfield  
Hertfordshire AL9 5HZ

[Kathryn@reassurancesecurityservices.co.uk](mailto:Kathryn@reassurancesecurityservices.co.uk) or  
[Kathryn@reassuranceresourcemanagement.co.uk](mailto:Kathryn@reassuranceresourcemanagement.co.uk)  
T: 01707 682670

## SirsiDynix

SirsiDynix is the global leader in library automation software with customers around the world serving 300 million library users worldwide. Working in partnership with academic libraries, SirsiDynix helps scholarly communities thrive by connecting people with information resources that educate and inspire.

Our BLUEcloud library services platform delivers the *Best Library User Experience* through attractive mobile and web interfaces, coupled with open, feature-rich library management system functionality and enterprise-ready analytics.

Meet us at the welcome drinks reception.

## Talis

Talis help universities in eight countries, including over 70% of all UK universities, to manage and deliver learning resources online. Talis services integrate with all major ILS and LMS solutions together with a range of authentication services, Reproduction Rights Organisations (RRO), bookstores and providers. The cloud-based SaaS system hosts nearly 900,000 reading lists, with over 28 million references, serving in excess of 100 million views of reading lists by students each year. For more information about Talis, visit <http://talis.com>.

Find us in the Terrace room.



[www.sirsidynix.com](http://www.sirsidynix.com)

SirsiDynix  
First Floor, Axis 6  
Rhodes Way  
Watford WD24 4YW

E: [sales-uk@sirsidynix.com](mailto:sales-uk@sirsidynix.com)  
T: 01923 202901



[www.talis.com](http://www.talis.com)

Ian Corns  
Account Sales Manager

E: [ijc@talis.com](mailto:ijc@talis.com)

### Times Higher Education

Times Higher Education (THE) has been at the heart of the UK's higher education sector for nearly half a century. During this time it has built a solid reputation as one of the most authoritative and trusted sources of information for the higher education sector.

**Find us in the Terrace room.**



[www.timeshighereducation.com](http://www.timeshighereducation.com)

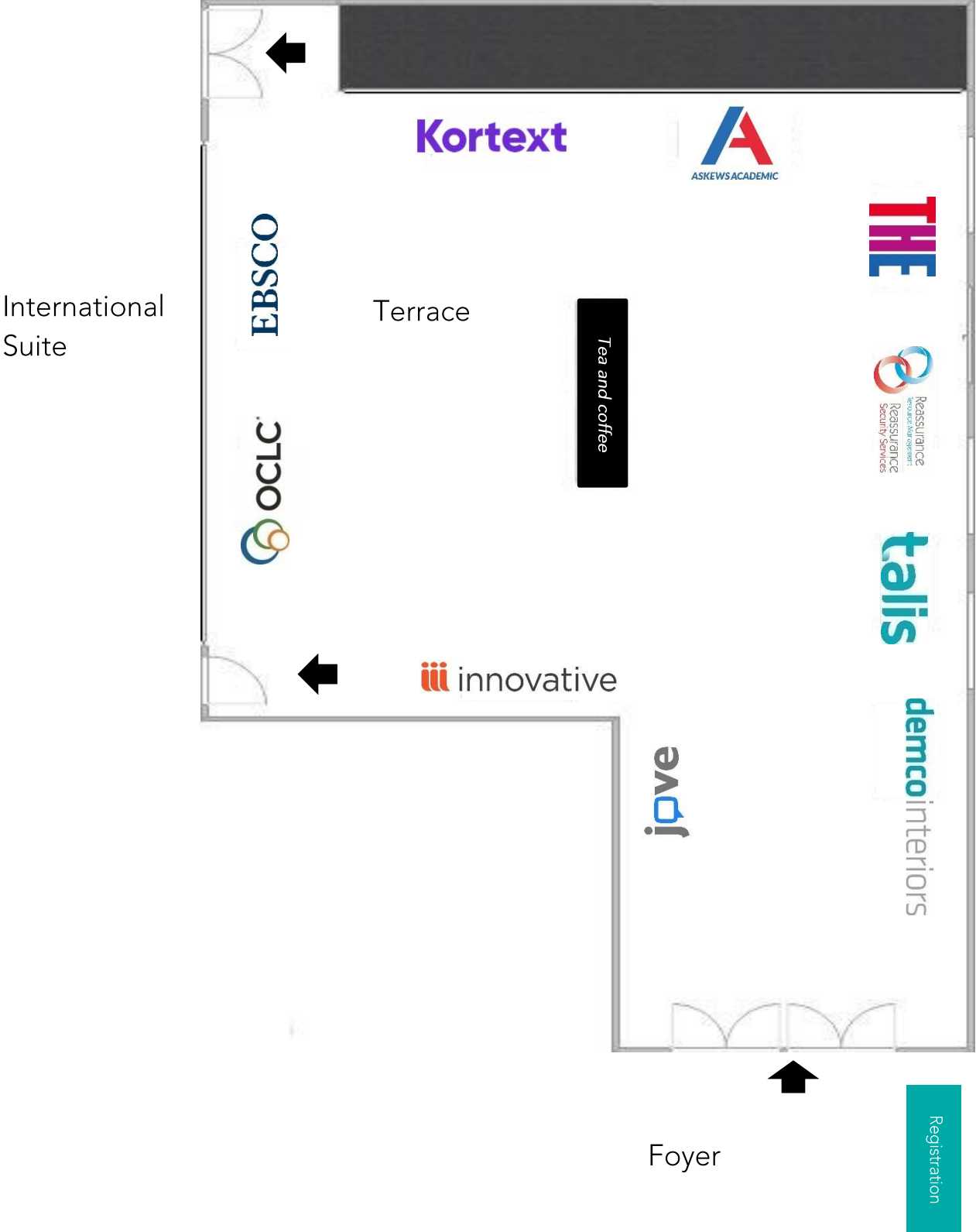
Kimberley Glover  
Subscriptions Account Manager

THE (Times Higher Education)  
26 Red Lion Square  
London WC1R 4HQ

E: [Kimberley.Glover@timeshighereducation.com](mailto:Kimberley.Glover@timeshighereducation.com)  
T: 020 3963 4571



# Exhibition layout



SCONUL would like to thank the following sponsors for their support



demcointeriors

EBSCO

iii innovative

jove

Kortext



talis

THE