

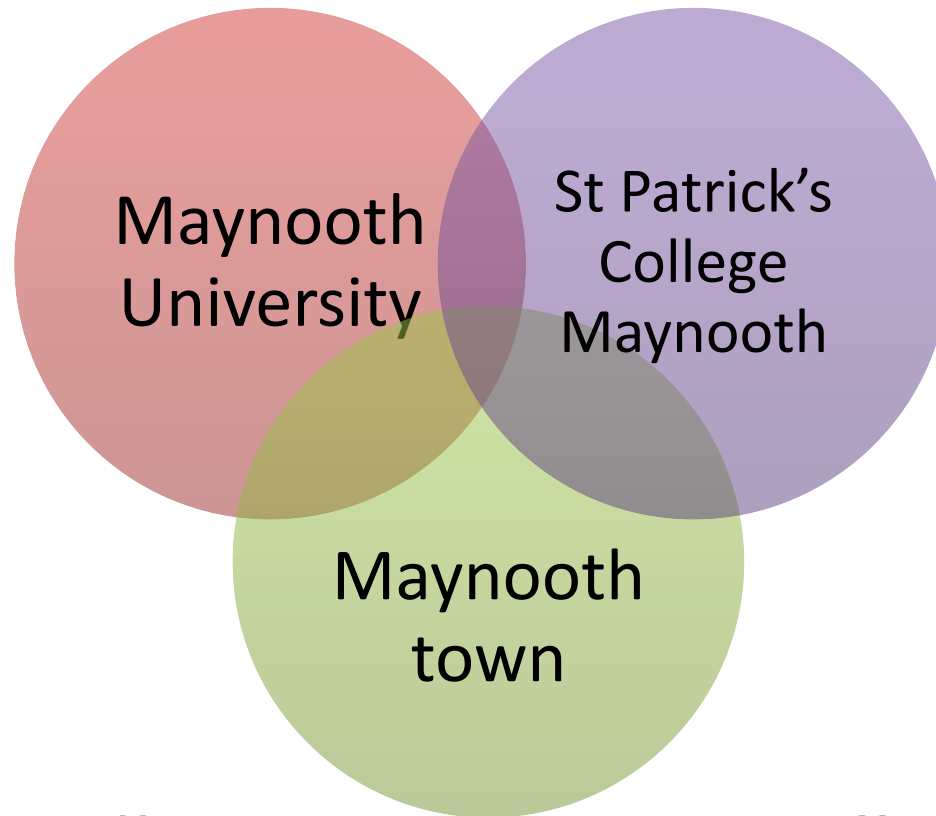


**Maynooth
University**

National University
of Ireland Maynooth

**The transformative impact of the new
library extension at Maynooth University**
Cathal McCauley, University Librarian, Maynooth University
St. John Handley, Director, Scott Tallon Walker Architects
SCONUL Library Design Awards 2016

Institutional context



“Town and gown”

Rationale for new library

- Significant institutional growth
- Longstanding concerns
- Catalyst for change (internal and external)
- Remove 'barriers'



Stakeholder Feedback/Priorities

Students	Faculty	Wider Community
'Green' building	Dedicated PG / staff space	Publicly accessible areas
More electrical outlets	Exhibitions area	Café
Diversity of learning styles catered for	Meeting rooms	Exhibitions area
Dedicated postgraduate/staff space	Non-timetabled space	Community space
Training spaces	Café	Exemplar building
Personal service & support	Library staff area refurbished	Welcoming building
Opening hours	Subject 'ghettos' – disciplines confined to old areas	
Café		
Sense of pride		

Catalyst for change

- Evolution of building, space and profession
- Change *where* we work / change *how* we work
- Organisational review: 2011-12
- New organisational structure for a new space



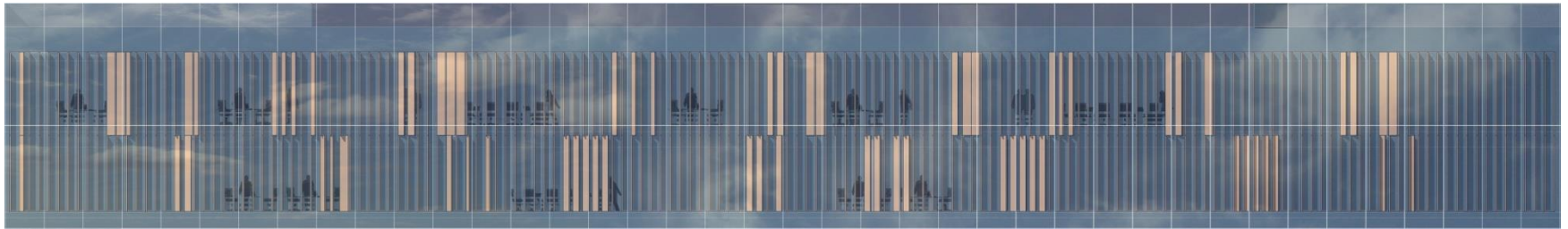
Architectural Vision

- To create a world class library facility in the heart of a historic campus setting.
- To create an open, bright, modern, naturally ventilated, healthy environment in which to study.
- Always apply the *Librarian Mantra* – KEEP IT FLEXIBLE!



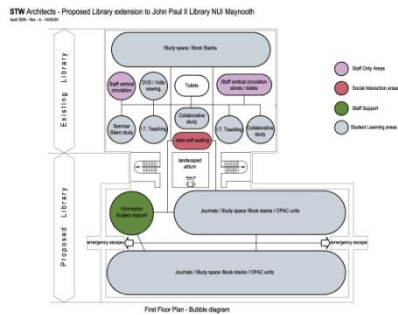
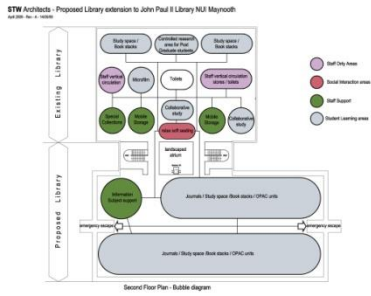
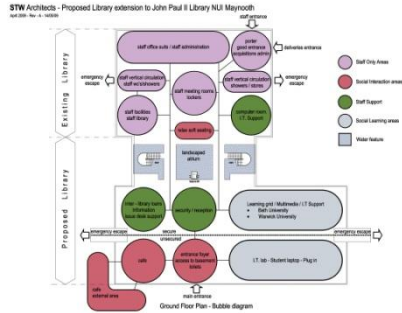
Architectural Vision

– from concepts to reality



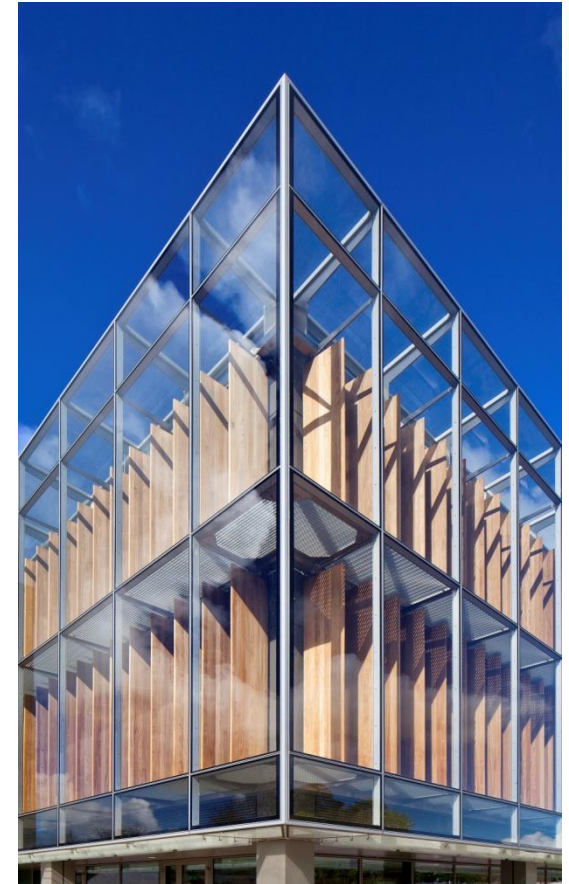
Architectural Vision

– from concepts to reality



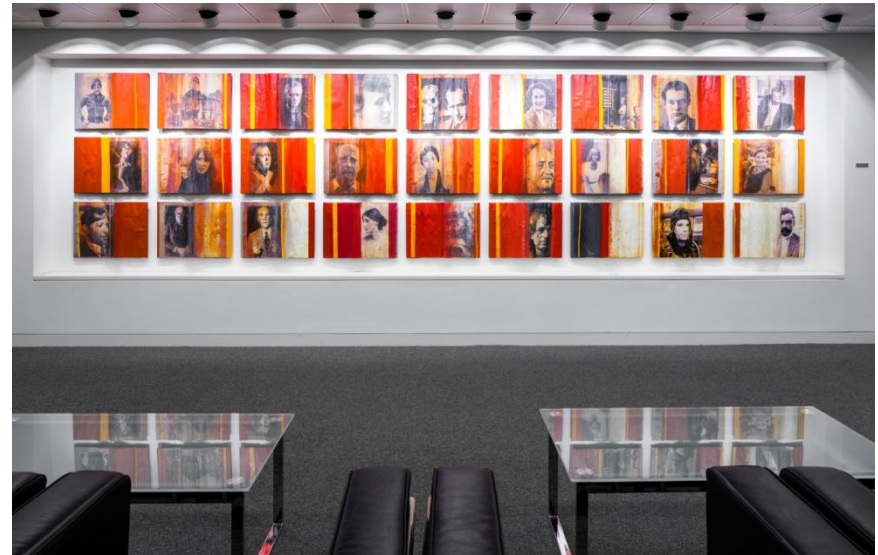
Architectural Vision

- Healthy environment – intelligent facades.



A transformative project

- Learning environments
- Collections
- Strategic position
- Professional
- Cultural Hub
- Nexus for collaboration



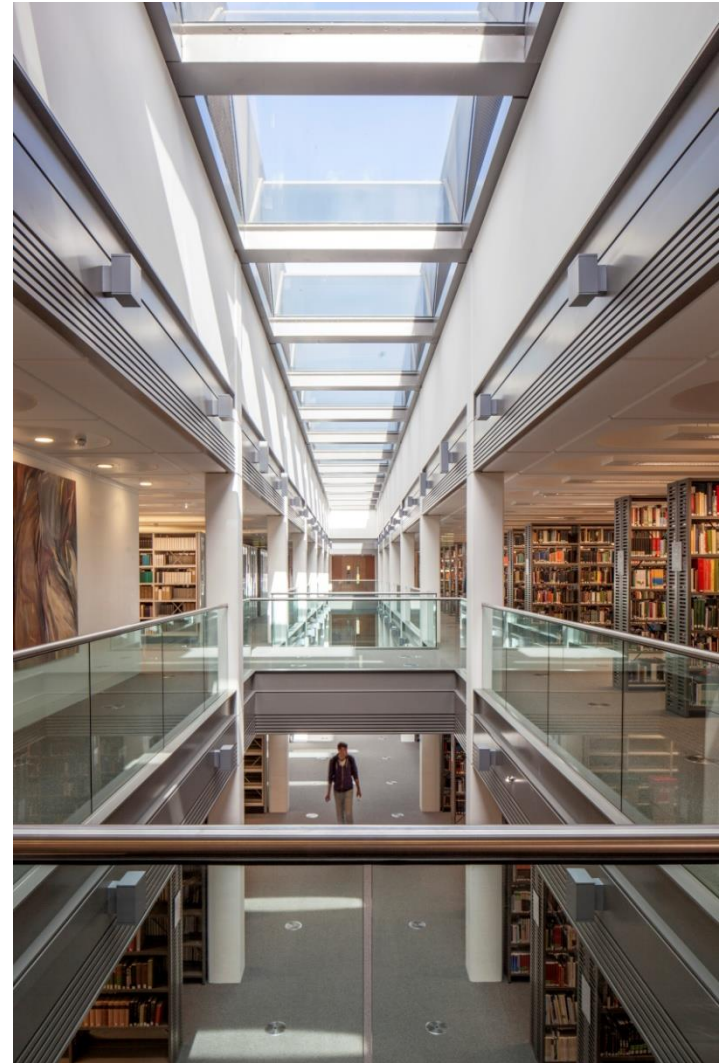
Learning environments

- Flexibility of space
- Variety of learning styles
- Future proofed
- Evaluate and understand



Collections

- Reassess
- Reconfigure
- Showcase and highlight
- Death of print?
- Unique and Distinctive Collections
- Accessibility



Strategic Position

- Building as enabler
- Show what we can deliver
- Redefine our role
- Strategic prominence
- Professional
- Cultural hub



Professional responsibilities





Cultural hub



Nexus for collaboration

- Neutral space
- ‘Town and gown’
- Stunned by the demand
- Too successful?



Metrics – the hard

- 216% increase in seating
- 147% increase in space
- 130% increase in shelving
- Consistent rise in footfall
- Consistent rise in online interaction
- New spaces
- New users
- New role

Metrics – the soft

“Love this library by the way!! Well done NUIM”

Social media

“This new Library is pretty slick!! Feel like I'm in 2020”

“The New NUIM library is UNBELIEVABLE! So excited to be essay writing all day!”

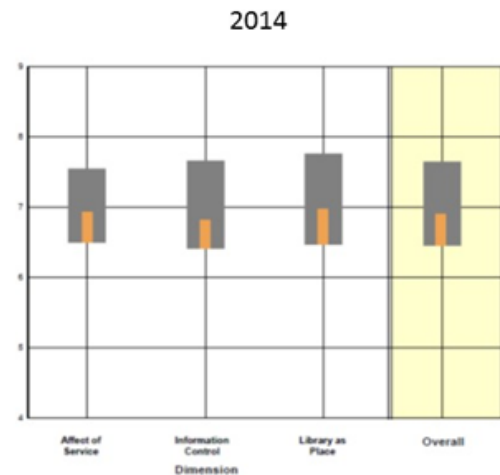
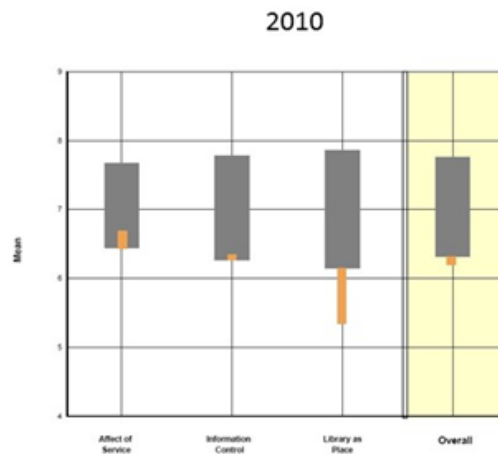
“It's official. Maynooth has the slickest library in the country.”

“The new #NUIMLibrary is like being in Willy Wonka's Chocolate Factory. #SoMagical”

Libqual improvement

“a resounding success”

2015 Quality review peer review group report





Maynooth
University

O scoil
Mha Nu

Last words....

- Vision...but be flexible and practical
- Leadership and involvement...but know when to take advice
- Team approach vital ... but make the calls when you have to
- Complex and distinct ... but must be considered in overall institutional and organisational context
- Challenging ...but worth it (x100)
- Most rewarding professional experience (to date) – duty and pleasure to share
- Never finished...

Thank you!

Go raibh maith agaibh!

Cathal McCauley
University Librarian
Maynooth University
Cathal.McCauley@nuim.ie
@cathalmccauley

St. John Handley
Director, Scott Tallon Walker
St_John.Handley@stwarchitects.com