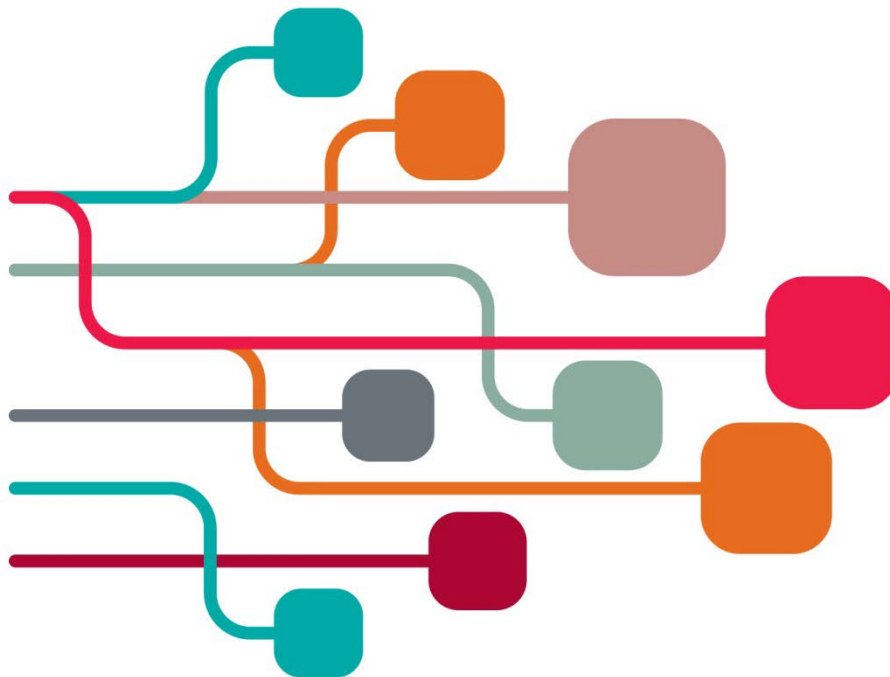


**SCONUL Summer Conference and AGM 2014**

25-27 June 2014

# The Open Library: Collections, collaboration and challenges



Grand Central Hotel Glasgow  
99 Gordon Street, Glasgow, Scotland, G1 3SF

# Contents

<a href="#">Conference programme</a>	<a href="#">page 5</a>
<a href="#">Venue information</a>	<a href="#">page 10</a>
<a href="#">Using Wifi</a>	<a href="#">page 11</a>
<a href="#">Speaker biographies</a>	<a href="#">page 13</a>
<a href="#">Delegates</a>	<a href="#">page 28</a>
<a href="#">Glasgow School of Art</a>	<a href="#">page 37</a>
<a href="#">Visits to university libraries in Glasgow</a>	<a href="#">page 38</a>
<a href="#">Welcome drinks reception</a>	<a href="#">page 42</a>
<a href="#">Conference Dinner</a>	<a href="#">page 43</a>
<a href="#">Parallel sessions</a>	<a href="#">page 47</a>
<a href="#">Parallel sessions attendee lists</a>	<a href="#">page 51</a>
<a href="#">Fringe</a>	<a href="#">page 61</a>
<a href="#">SCONUL at a glance</a>	<a href="#">page 65</a>
<a href="#">SCONUL Strategy Groups</a>	<a href="#">page 66</a>
<a href="#">Glasgow information</a>	<a href="#">page 70</a>
<a href="#">Meet our sponsors</a>	<a href="#">page 73</a>
<a href="#">Exhibitor layout</a>	<a href="#">page 78</a>
<a href="#">Evaluation Survey</a>	<a href="#">page 79</a>

---

# THE LIBRARY IS

# OPEN

Innovative is **inspired** by you, the library.

Your ability to **grow** and **change** in the face of new challenges keeps the library **relevant** today and into the future.

Innovative is growing and changing, too. We are pleased to announce that **Polaris** is now a part of Innovative. This combination of two great companies will allow us to offer our users the **best** products and service in the industry.

Everything is possible when The Library is Open.

 innovative

---

[www.iii.com](http://www.iii.com) » [info@iii.com](mailto:info@iii.com) » 800+878+6600



Scottish Confederation of University and Research Libraries

Welcomes SCONUL Summer Conference 2014 to Glasgow



**Mackintosh Library Glasgow School of Art**

**SCURL Member Institutions**

Abertay University  
Edinburgh City Libraries  
Edinburgh Napier University  
Glasgow Caledonian University  
Glasgow Life  
Heriot-Watt University  
National Library of Scotland  
National Museums Scotland  
Open University  
Queen Margaret University  
Robert Gordon University  
Royal Botanic Garden Edinburgh

Royal Conservatoire of Scotland  
Scottish Library and Information Council  
Scottish Rural University College  
University of Aberdeen  
University of Dundee  
University of Edinburgh  
University of Glasgow  
University of Stirling  
University of St Andrews  
University of Strathclyde  
University of the Highlands and Islands  
University of the West of Scotland

SCURL is the major consortium of university and research libraries in Scotland. Our strategic aims are to:

- improve and develop services for users and maximise access to resources through collaborative action and shared services
- collaborate with other organisations, sectors and domains towards the creation of a co-operative library infrastructure in Scotland
- advocate matters of shared interest on behalf of members to funding and planning bodies & other professional organisations.

**For more information please see [scurl.ac.uk](http://scurl.ac.uk) or contact:**

**Chair**

Dilys Young, Librarian  
University of Strathclyde  
[dilys.young@strath.ac.uk](mailto:dilys.young@strath.ac.uk)

**SCURL Service Development Manager**

Jill Evans, National Library of Scotland  
[j.evans@nls.uk](mailto:j.evans@nls.uk)

## Conference programme

Wednesday 25 June	
14.30 - 16.30	Visits to university libraries in Glasgow (see page 37 for details)
18.30 - 20.00	Welcome drinks reception, (see page 42 for details)
Thursday 26 June	
09.30	Registration
10.15	<b>Welcome</b> from Sara Marsh, Chair of SCONUL
10.20	<p><b>The Borderless Library: new approaches to collaborative collection development</b></p> <ul style="list-style-type: none"> <li>• <b>Laine Farley</b>, Executive Director of the California Digital Library <i>From Optional Choice to State of Being: Progress in Collaborative Collections</i></li> <li>• <b>Anja Smit</b>, University Librarian at Utrecht University and Chair of UKB <i>Dutch Libraries Crossing Borders: Collections in a Global Infrastructure</i></li> <li>• <b>Chair – Mark Toole</b>, Chair, SCONUL Shared &amp; Collaborative Services Strategy Group</li> </ul>
11.30	Coffee
12.00	<p><b>Keynote speech:</b> <i>Open Access, Open Data and Open Scholarship – the role of libraries in an open world</i></p> <p><b>Mark Thorley</b>, Chair, RCUK Research Outputs Network and Head of Science Information and Data Management Co-ordinator, NERC</p>
13.00	Lunch – Conference hall foyer, Grand Central Hotel
14.00	<p><b>Parallel sessions: open access, where do we go from here?</b></p> <ul style="list-style-type: none"> <li>• <b>Lorraine Estelle</b>, Executive Director Content and Discovery, Jisc and Divisional CEO, Jisc Collections <i>Subscriptions and APCs</i> <b>Wellington Room</b></li> <li>• <b>Valerie McCutcheon</b>, Research Information Manager, University of Glasgow <i>Systems and psychologies – developing closer relationships with research offices</i> <b>Buchanan Room</b></li> <li>• <b>Dr Stuart Fancey</b>, Assistant Director, Research and Innovation, Scottish Funding Council <i>Open access and the REF</i> <b>Great Western Room</b></li> <li>• <b>Caroline Wilkinson</b>, Open Access Relationship Manager, Ubiquity Press Ltd <i>The future of open access and the role of the library</i> <b>Hamilton Room</b></li> <li>• <b>Rachel Bruce</b>, Director of Technology Innovation, Jisc <i>Libraries and open research data – whose role is it anyway?</i> <b>Clyde Room</b></li> </ul>


Thursday 26 June	
15.00	Coffee
15.30	The SCONUL fringe (see page 61 for details)
16.15	<p>Sharing in research communities: panel discussion</p> <ul style="list-style-type: none"> <li>• Ben Lund, Chief Technology Officer, Academia.edu</li> <li>• Dr Martin Eve, Lecturer in English Literature, University of Lincoln</li> <li>• Chris Banks, Director of Library Services, Imperial College London</li> <li>• Andy Miah, Professor of Ethics and Emerging Technologies and Director of the Creative Futures Institute, University of the West of Scotland</li> <li>• Chair – Kitty Inglis, Chair, SCONUL Academic Content &amp; Communications Strategy Group</li> </ul>
17.15	Close
18.30	Conference Dinner (see page 43 for details)

Friday 27 June	
09.15	SCONUL AGM (see separate AGM pack)
10.30	Coffee
11.00	<p>Keynote speech: <i>Gibson was right: the future is already here</i>            Dr Larry Johnson, Chief Executive Officer, New Media Consortium</p>
12.00	The SCONUL Fringe (see page 61 for details)
12.45	Lunch – Conference hall foyer, Grand Central Hotel
13.45	<p>Parallel sessions: the intelligent library</p> <ul style="list-style-type: none"> <li>• Pete Dalton, Director and Jo Alcock, Researcher, Evidence Base <i>Value and impact of academic libraries: experiences and approaches</i> <b>Clyde Room</b></li> <li>• Joy Palmer, Senior Manager, Library and Archival Services, Mimas <i>Using analytics to inform library practice</i> <b>Great Western Room</b></li> <li>• Dr Peter Shepherd, Director, COUNTER <i>New usage-based measures of impact in the context of altmetrics</i> <b>Hamilton Room</b></li> <li>• Alison Allden, Chief Executive, Higher Education Statistics Agency <i>Using BI data and information for insights, performance and planning</i> <b>Buchanan Room</b></li> <li>• Dr Rebecca Ferguson, Lecturer and Data Wrangler, Institute of Educational Technology, Open University <i>The role and impact of learning analytics in universities</i> <b>Wellington Room</b></li> </ul>

Friday 27 June	
14.45	Coffee
15.15	<p>Making e-books fit for students: three challenges</p> <ul style="list-style-type: none"> <li>• Dr Paul Ayriss, Director and Acting Group Manager, Planning and Resources and Academic Support Group, Library Services, University College London <i>University presses – the library as publisher</i></li> <li>• Liam Jarnecki, Head of Student Engagement Unit, National Union of Students <i>Partnership and engagement</i></li> <li>• Matthew Lawson, Assistant Director, Library and Learner Development, Library and Student Support, Middlesex University <i>A new acquisition model: personal e-books for students</i></li> <li>• Chair – Liz Jolly, Chair of SCONUL</li> </ul>
16.15	Closing remarks Liz Jolly, Chair of SCONUL
16.25	Close



 **Software for super librarians**

 Catalog faster than a speeding bullet  
Write reports that reveal more than x-ray vision  
With BLUEcloud, you're a library hero

 **SirsiDynix®**





Working together, OCLC members **explore** trends that shape the future of all libraries. They **share** data, work and resources in ways that save time and money while improving service for their communities. And, collectively, they **magnify** the impact of libraries, representing the sum of all members' efforts.



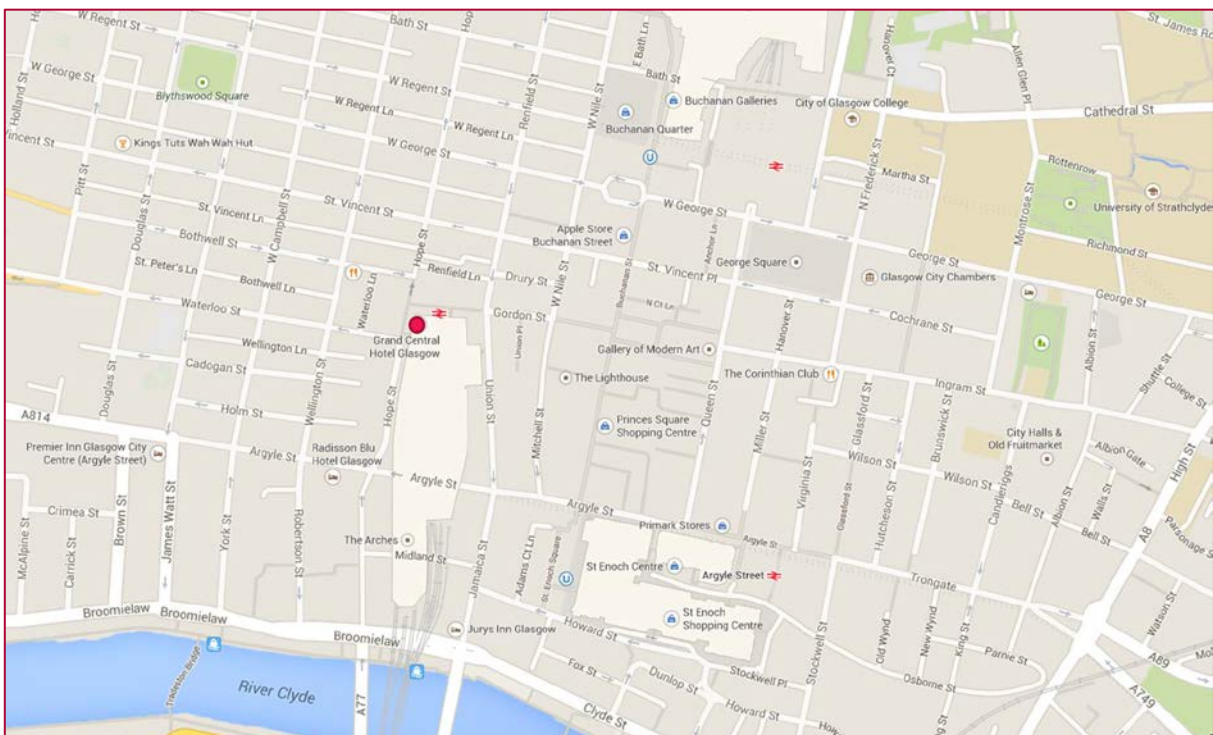
## Conference hotel

SCONUL Summer Conference and AGM 2014 will take place at the Grand Central Hotel Glasgow, which is next to Glasgow Central Station.

The main conference hall, *The Grand Room* is on the Mezzanine floor. Three of the meeting rooms, the Great Western, the Buchanan and the Wellington Rooms are on the corridor leading to the conference hall. The remaining two meeting rooms, the Hamilton and the Clyde, are on the floor above.

## Getting to the conference hotel

Grand Central Hotel  
99 Gordon Street  
Glasgow  
Scotland, G1 3SF  
[www.thegrandcentralhotel.co.uk](http://www.thegrandcentralhotel.co.uk)



## Using Wifi at the Grand Central Hotel

Wifi is available free of charge within the hotel for all SCONUL delegates. To connect to the internet please follow these steps:

In your device settings, log onto the *Principal-Hayley network*

open a browser on your electronic device

enter a generic website (e.g. [www.google.co.uk](http://www.google.co.uk))

You will be automatically directed to a page called 'login.liberty-izone.com'

Type in the username and password:

**Username:** **gchsconul**

**Password:** **gch**

tick the box to agree to the terms of use

click the LOGIN button.



**Discover | Manage | Preserve**

A unified platform for the management and discovery of all library resources.

Fully integrated solutions to enhance collaboration, efficiency, and accessibility.



Ex Libris Group | [www.facebook.com/exlibrisgroup](https://www.facebook.com/exlibrisgroup) | [www.exlibrisgroup.com](http://www.exlibrisgroup.com)

## Speakers

### In order of appearance



#### Sara Marsh

Director of Information Services, University of Bradford and Chair of SCONUL

Sara joined the University of Bradford in summer 2007. In her current role as Director of Information Services she has responsibility for the University Library and IT Services. She was previously Deputy Director of Library and Information Services at Swansea University.

Sara has been Chair of SCONUL since summer 2012, and has recently been active in supporting SCONUL's relationship with Jisc through the 'Futures Forum' series of partnership projects.



#### Laine Farley

Executive Director, California Digital Library  
University of California Office of the President

In her role as Executive Director, Laine provides leadership to the California Digital Library (CDL) and determines its strategic direction. She is responsible for the organisation's overall management, including planning, policy development and resource allocation. Laine has been with the CDL since its inception in 1997 and assumed the position of Executive Director in 2008. Previously, her roles at the CDL have included positions as Director of Digital Library Services and Deputy University Librarian. In addition, she was the User Services Co-ordinator

and the Co-ordinator of Bibliographic Policy and Services at the University of California (UC) Division of Library Automation. She has also been a reference librarian and co-ordinator of bibliographic instruction at UC Riverside, and head of the Humanities Department at the Steen Library at Stephen F. Austin State University. She holds a B.A. in Liberal Arts and an M.L.S. from the University of Texas at Austin.

Throughout her career, Laine has worked on a wide range of projects involving bibliographic database design, user interface design, cataloguing theory and practice, interlibrary loan processes and standards, government information, digital images and archival finding aids. Laine has a special interest in identifying emerging service needs in support of scholarship in a digital realm, and developing innovative solutions that blend traditional and new service environments.



## Anja Smit

University Librarian Utrecht University, The Netherlands

Anja joined Utrecht University in 2010, after an international career of over 20 years in library management and library automation.

Anja has been a library director at two Dutch Universities (Nijmegen and Maastricht) and spent three years in the US. As an Executive Consultant for NELINET, she helped libraries on strategic and tactical planning, human resource management, facilities renovation and other topics critical to library administrators.

Active in the library world since 1988, she served on several national and international committees, including membership of the Board of a public library organisation. She is currently a member of The Dutch Consortium for Information Infrastructure and Chair of the Dutch Consortium of University Libraries and the Royal Library (UKB).



## Mark Toole

Head of Libraries and Learning Resources at Nottingham Trent University and Chair of the SCONUL Shared & Collaborative Services Strategy Group

Mark has been Head of Libraries and Learning Resources at Nottingham Trent University since January 2014. Previous posts include Director of Information Services at the universities of Stirling and Brighton and management posts at the University of Kent and the LSE.

He is currently a member of the SCONUL Executive Board and will be Vice-Chair from June 2014. He also chairs the SCONUL Shared & Collaborative Services Strategy Group, chairs the Jisc Access and Identity Management (AIM) Consultation Group and is a member of the Jisc Collections Knowledge Base + Steering Board, chairing its Technical Advisory Group, and of the EDINA Management Board.

# CAPITA

## Delivering a better

## library experience

### Our library management system at a glance:

- Exceeds expectations by delivering easy access to all your resources
- Accessible from anywhere at anytime, using any mobile device
- Hosted and fully managed for you in our secure data centre
- Search for books, e-resources and archive data from a single search tool
- Reduces financial and IT overheads
- Minimises the time required to manage resources

Visit our stand at the SCONUL annual conference to find out how we can help you deliver an outstanding library experience for your staff and students.



[www.capita.co.uk/libraries](http://www.capita.co.uk/libraries)

[libraries@capita.co.uk](mailto:libraries@capita.co.uk)

0870 400 5000



## Mark Thorley

Chair, RCUK Research Outputs Network and Head of Science Information and Data Management Co-ordinator, NERC

As Head of Science Information and Data Management Co-ordinator for the UK's Natural Environment Research Council, NERC. Mark is responsible for activities relating to scientific data and information management, including the management of the NERC Research Library Service, and for co-ordinating the activities of NERC's network of environmental data centres.

He is also Chair of the Research Councils UK's Research Outputs Network, which leads for RCUK on issues relating to scholarly communications and open access. As such, he is one of the team behind the RCUK Policy on Access to Research Outputs and is heavily involved in its implementation. He is a member of the Executive Committee of the International Council for Science's Committee on Data for Science and Technology (ICSU – CODATA) and also a member of the Advisory Panel of 'Scientific Data' – the new data journal from Nature.



## Lorraine Estelle

Executive Director Content and Discovery, Jisc and Divisional CEO, Jisc Collections

Lorraine has worked for Jisc since 2002 and has been Chief Executive of Jisc Collections (the consortium for UK academic libraries) since 2006. She has overseen the growth and development of Jisc Collections and has been heavily involved in all aspects of its national procurement and licensing activities, as well as initiating a range of fruitful projects.

Lorraine is an active participant in the International Coalition of Library Consortia (ICOLC), an informal group currently comprising approximately 200 library consortia from around the world. She has recently been appointed to the COUNTER Board.

Prior to joining Jisc Collections, Lorraine worked in the publishing industry, firstly in trade book publishing and then in children's educational books and multimedia. Lorraine is also co-editor of [Insights: the UKSG journal](#)





## Valerie McCutcheon

Research Information Manager, University of Glasgow

Valerie has over 14 years' experience of managing research support systems within higher education institutions. From 2000-2012, as part of the role of Operation Manager for Research and Enterprise at the University of Glasgow, she led developments to the research system. The system had been installed in 1994 and new business requirements had to be addressed. These included a more user-friendly front end and costing functionality to facilitate compliance with Full Economic Costing requirements. She has driven forward integration of the repository with other core systems.

From 2012 she moved to the library to focus more on new requirements for research output management. She has a lead role in the open access agenda at the University of Glasgow including: setting up open access procedures to ensure compliance with funder requirements; research data management; and reporting of research outcomes to Research Councils UK and other funders. Prior to working at the University of Glasgow, Valerie has a long history of managing data and information for a range of business sectors including land surveys, seismic surveys, gas and oil well datasets, clinical trials, financial services, and software houses.



## Dr Stuart Fancey

Assistant Director, Research and Innovation, Scottish Funding Council

Stuart studied Physics at the University of St Andrews, graduating in 1989. Following two years at IBM Research Laboratories, he returned to Scotland to study for an MSc in Optoelectronics (1992) and a PhD in Photonics (1996) at Heriot-Watt University. Stuart remained at Heriot-Watt for four years of post-doctoral work on optoelectronic interconnects before taking up a Marie-Curie Fellowship from the European Commission at the University of Hagen in Germany between 2000-2002. Returning to Scotland, he was part of the founding team of

Helia Photonics Ltd in Livingston, a start-up company providing services to the laser diode industry.

In 2005, Stuart moved to the Scottish Funding Council (SFC) to work on the creation of research pools: building inter-institution research collaborations to address issues of critical mass and enhance excellence. At the SFC, Stuart is responsible for research and knowledge exchange funding and strategy and for initiatives such as Innovation Centres, Interface and Innovation Scotland. He is the Scottish lead on the REF Steering Group, overseeing REF2014 on behalf of the four funding bodies of the UK and was chair of the REF2014 Data Collection Steering Group. Stuart works closely with Scotland's enterprise agencies, Scottish Government and the UK Research Councils on a number of aligned interests. Stuart is a Chartered Physicist and member of the Institute of Physics.



## Caroline Wilkinson

Open Access Relationship Manager, Ubiquity Press Ltd

Caroline is the institutional relationship manager for Ubiquity Press, an innovative Open Access publisher that works with universities to return control of the scholarly publishing process to the research community. She has experience of working in both the academic publishing and library sectors and is an enthusiastic advocate of open access and open data.



## Rachel Bruce

Director of Technology Innovation, Jisc

Rachel has been responsible for a number of UK digital library and scholarship initiatives as part of her work at Jisc. Early on in her career she oversaw an initiative to improve access to special collections and archives. This resulted in digitised collections, catalogues of collections and the development of the Archives Hub service. She has directed developments at Jisc on institutional repositories and related shared services, as well as resource discovery and usage data innovations for libraries. She worked closely with SCONUL on the development of the Library Management Systems change work and the development of the

Knowledge Base + service. Currently Rachel works in the Jisc Digital Futures Directorate and oversees a number of activities including those relating to research data management, the development of related new services and activity with partners in relation to research data, as well as activity relating to the identification of new applications of technology for education and research. She is a member of the UK Open Research Data Forum, the UK Data Service Board, the Research Data Alliance Europe Committee and the SCONUL Shared & Collaborative Services Strategy Group. She is also the current Head of the [Knowledge Exchange](#) Office.



## Ben Lund

Chief Technology Officer, Academia.edu

Ben helped start [Academia.edu](#) in the living room of a small San Francisco apartment in 2008. With the rest of the engineering team, he helps build and grow what is now the largest open science platform on the web. From 2001 to 2006, Ben worked as a web developer and product manager at Nature Publishing Group. Prior to that, Ben studied Biological Anthropology at the University of Cambridge, and still follows the latest research in human evolution via his Academia.edu news feed. Academia.edu is a platform for researchers to share their work. Over ten million people have joined, uploading over three million papers.

Academia.edu's mission is accelerate the world's research by enabling distribution and access that is fast, free, and open.



## Dr Martin Eve

Lecturer in English Literature, University of Lincoln

Martin is a lecturer in English at the University of Lincoln, specialising in contemporary American fiction, primarily the works of Thomas Pynchon, Don DeLillo and David Foster Wallace. In addition, Martin is well-known for his work on open access, appearing before the UK House of Commons BIS Select Committee Inquiry into Open Access in 2013, writing for the British Academic Policy Series on the topic, being a steering-group member of the OAPEN-UK project, the Jisc National Monograph Strategy Group, the SCONUL Advisory Panel on Academic Content & Communications, the Open Knowledge Foundation's Open

Access Steering Group and the HEFCE Open Access Monographs Expert Reference Panel and founding the Open Library of Humanities. Martin is also a Microsoft Certified Professional in C# and the .NET Framework.



## Chris Banks FRSA

Director of Library Services, Imperial College London

Chris joined Imperial in September 2013. She had previously worked at the University of Aberdeen where she was University Librarian and Director of Library, Special Collections and Museums, and at the British Library where she spent over 20 years in a variety of curatorial, management and strategic roles.

At Aberdeen Chris was the library lead on the award-winning £57m library project and The Sir Duncan Rice Library was opened by Her Majesty the Queen in September 2012. Chris is currently an elected Board Member of Research Libraries UK as well as acting on the advisory boards of several major publishers.



## Professor Andy Miah

Professor of Ethics and Emerging Technologies and Director of the Creative Futures Institute, University of the West of Scotland

Andy (@andymiah) is Director of the Creative Futures Institute and Chair of Ethics and Emerging Technologies at the University of the West of Scotland. He is also Global Director for the Centre for Policy and Emerging Technologies, Fellow of the Institute for Ethics and Emerging Technologies and Fellow of the Foundation for Art and Creative Technology, Liverpool. His research focuses addresses social, ethical, and legal questions concerning the use of technology, from biotechnology to digital innovation.



### Kitty Inglis

University Librarian at the University of Sussex and Chair of the SCONUL Academic Content & Communications Strategy Group

Kitty is currently University Librarian at the University of Sussex and has over 25 years' experience in a wide range of academic libraries, the last 15 of which have been at a senior managerial level. Her professional interests are wide ranging and include open access, research data management, customer service, leadership development and e-learning. Elected to the SCONUL Board in June 2012, she is Chair of the Academic Content & Communications

Strategy Group. Kitty represents SCONUL on the UKRR Board, on the UK Open Access Implementation Group and on the UUK Open Access Co-ordination Group. She has served on the Steering Group of the M25 Consortium of Academic Libraries and is Chair of the Mass Observation Archive Trust.



### Liz Jolly

Director of Library and Information Services, Teesside University and Vice-Chair of SCONUL

Liz is currently Vice-Chair of SCONUL and will take over as Chair following this AGM. Before joining Teesside University she was Associate Director (Services and Operations) in Information and Learning Services at the University of Salford. She has held departmental senior management positions at East London and London South Bank universities and has also worked at Huddersfield, Leeds Metropolitan, Lincoln and Manchester Metropolitan universities.

Liz is a Fellow both of CILIP and the Royal Society for the encouragement of Arts, Manufactures and Commerce (RSA). A former Chair of the CILIP University, College and Research Group, Liz is a member of the Editorial Board of the *New Review of Academic Librarianship* and a member of the British Library Advisory Council.

Liz wrote the chapter 'Space: changing the boundaries' in *Collaboration in Libraries and Learning Environments*, 2013, Facet Publishing, edited by Maxine Melling and Margaret Weaver.



## Alison Mackenzie

Dean of Learning Services, Edge Hill University and Chair of the SCONUL Performance & Quality Strategy Group

At Edge Hill University, Alison is responsible for a range of complementary academic services, including library services, learner support, comprising IT, academic literacies and support for students with a specific learning difficulty (SpLD); learning technology and media development teams who provide support and expertise on technologies to support teaching, learning and research to academic staff, students and researchers. Prior to taking up this post, Alison held the post of University Librarian at Bangor University, a variety of roles at Manchester Metropolitan University and in her early career worked in art colleges and commercial practice.

Alison has been active in SCONUL for a number of years, as a member and Chair of the Working Group on Information Literacy and as a contributor to the e-learning task and finish group. She is currently chair of the Performance & Quality Strategy Group and is in the process of co-editing a book on Digital Librarianship



## Robert Hall

Director of Library Services and Employability at King's College London and Treasurer of SCONUL

Robert is the Director of Library Services and Employability at King's College London. He joined King's in July 2011 and is responsible for the College's Library Services, which includes archives and corporate information management, and the Careers and Employability Service.

Robert has an MA in Librarianship from the University of Sheffield and has been Head of Medical and Healthcare Libraries at the University of Leeds and Head of Library Services at the University of Surrey. Prior to joining King's he was Director of Learning Support and Development at London South Bank University.

Robert has previously served for two terms as Chair of the M25 Consortium of Academic Libraries. He became the Treasurer of SCONUL in June 2013.



## Dr Larry Johnson

Chief Executive Officer, New Media Consortium

Dr Larry Johnson serves as Chief Executive Officer of the New Media Consortium, an international not-for-profit consortium dedicated to the exploration and use of new media and new technologies. Its hundreds of member institutions constitute an elite list of the most highly regarded universities, museums and research centers in the world. The NMC's dozen-year exploration of technology use in education, the Horizon Project, informs strategic technology planning for educational institutions in more than 175 countries. As the project's founder, Johnson works with visionaries and thought leaders from across the globe to define new ways of thinking about technology, and explore emerging trends and issues.



## Pete Dalton

Director, Evidence Base, Birmingham City University

Pete is Director of Evidence Base Research and Evaluation Service at Birmingham City University. He is a Fellow of the Institute of Consulting and has worked on many research, evaluation and consultancy projects in the library and information sector. His clients have included SCONUL, Jisc, HEFCE and a range of university information services. His areas of professional interests include fostering evidence based practice in libraries and the value and impact of library services.



## Jo Alcock

Researcher, Evidence Base, Birmingham City University

Jo is chartered information professional with previous experience in academic libraries, currently working as Evidence Based Researcher. She has worked on a number of projects for the library and information sector, including the Jisc-funded mobile library community project, Journal Usage Statistics Portal, and Institutional Repository Usage Statistics.

She has also worked with CILIP to develop their new Professional Registration regulations, and is currently working with the British Association for Information and Library Education and Research to develop their web presence. Jo is an experienced presenter and workshop facilitator, having delivered conference presentations and workshops at a number of events for librarians and information professionals.



## Joy Palmer

### Senior Manager for Library and Archival Services, Mimas

Joy currently works as the Senior Manager for Jisc's national Library and Archival services at Mimas. This means she is responsible for the strategic direction of services such as [Copac](#) and the Archives Hub, for securing funding, and for designing and overseeing related innovation projects in areas such as resource discovery, analytics, and digital humanities.

She is currently working with Ben Showers at Jisc to lead on the development of the Library Analytics and Metrics Project (LAMP). Joy also heads up Mimas' marketing, UX design and user-research activity, managing the cross-service Marketing and User Experience team.



## Dr Peter T Shepherd

### Director, COUNTER

In a career spanning over three decades, Peter has become intimately acquainted with most aspects of STM journal, book and database publishing, having worked as a publisher with Wiley, Pergamon, Elsevier and Harcourt. Since 2002 Dr Shepherd has been Director of COUNTER, the not-for-profit international organisation whose mission is to improve the quality and reliability of online usage statistics. Since 2011 COUNTER has also had overall responsibility of the development and management of the Usage Factor project.

Peter received a PhD in chemistry in 1978 from St Andrews University and joined the publishing industry in 1980, following a post-doctoral research fellowship at the University of California, Santa Barbara.



## Alison Alden

Chief Executive, Higher Education Statistics Agency

Alison became Chief Executive of HESA (Higher Education Statistics Agency) based in Cheltenham at the start of August 2009. From 2003-2009 Alison was on the senior executive of Bristol University as Deputy Registrar and Director of Information Services. Before that she was Director of IT at Warwick University, 1998-2003, and moved into the university sector in 1993 as Director of Computing for Goldsmiths College, University of London. Prior to that she ran computing for a Department of Health associated body and worked in IT at two national museums, after gaining an MSc in Computing from LSE. This

followed a 10-year career in museums and archaeology after gaining a BA Hons from Bristol University. She is a Fellow of the British Computer Society, Member of CILIP and a Member of the Institute for Archaeologists. She is currently a member of the DfE/BIS Information Standards Board and the HE Regulatory Partnership Group (RPG).

In a personal capacity she is on the Board of Northumbria University and a school governor at two schools.



## Dr Rebecca Ferguson

Lecturer and Data Wrangler, Institute of Educational Technology, Open University

Rebecca is a lecturer at The Open University, focused on educational futures, particularly on learning analytics and MOOCs. She co-chaired the 1st and 2nd International Workshops on Discourse-Centric Learning Analytics, as well as the 2012 UK SoLAR Flare event that brought together researchers and practitioners in learning analytics from across the UK. She is currently working on LACE, the learning analytics community exchange, a European project set up to develop communities and share expertise around learning analytics.

Her latest book, *Augmented Education*, was published by Palgrave in March.





### Dr Paul Ayris

Director and Acting Group Manager, Planning and Resources and Academic Support Group, Library Services, University College London

Paul has been Director of UCL Library Services since 1997. He is also the UCL Copyright Officer.

He was the President of LIBER (Association of European Research Libraries) from 2010 until 2014; he is now Advisor to the LIBER Board on EU matters. He is Chair of the LERU (League of European Research Universities) Community of Chief Information Officers. He chairs the OAI Organizing Committee for the Cern Workshops on

Innovations in Scholarly Communication. He is also the Chair of Jisc Collections' Electronic Information Resources Working Group. On 1 August 2013, Paul Ayris became Chief Executive of UCL Press.

He has a Ph.D. in Ecclesiastical History and publishes on English Reformation Studies.

### Liam Jarnecki

Head of the Student Engagement Unit, National Union of Students



Liam has been the Director of The Student Engagement Partnership since August 2013. From 2004 he was Director of Thames Gateway Further and Higher Education Action Group, later the Thames Gateway Skills Alliance. This role involved working across Government departments and liaising with further and higher education providers in the region. A central function was briefing and advising Ministers on skills strategies and investment for the largest regeneration project in Europe. This strategic collaboration led to significant central support being made available for initiatives such as the new

Ravensbourne campus on Greenwich Peninsula, the new Birkbeck/UCL site at Stratford, the 'multiversities' in Medway and Southend as well as numerous sector skills academies.

From 1998-2004 he was Director of NUS Scotland, working with Scottish HE Funding Council to set up Student Participation in Quality Scotland in 2003 to drive forward student participation in quality and academic governance. He also led the organisation's work in the Scottish Parliament around tuition fee abolition and the Cubie Report. He then became responsible for all other devolved areas and NUS UK's Press and Public Affairs Unit. He is a proud B.Sc. psychology graduate from the former North East London Polytechnic at which he enrolled in 1987 when it was under LEA control and the Principal was Gerry Fowler. By 1991 Liam was SU President and a Governor. He was one of the first students in the UK to be directly involved in review and validation. He has been involved in Stonewall FC, the world's leading LGBT football club since 1992 and has been Chairman since 2007.



## Matthew Lawson

Assistant Director, Library and Learner Development,  
Library and Student Support, Middlesex University

Matthew is Assistant Director of Library and Student Support at Middlesex University. He previously worked at King's College London and London South Bank University as well as in public libraries.

Matthew is responsible for library services, both on-campus and remote, including acquisition and management of library collections, information skills, academic writing and numeracy and Student Learning Assistants. This year the University has committed to an

ambitious project led by the Library to purchase personal e-books for all students in the Business and Law schools.

## Security

**We provide experienced, customer focussed staff who deliver more than just security.**

- Weekend / late hours providing additional back up to library staff
- Access control
- Library patrols
- Lock down
- 24/7 cover during exam revision periods
- Flexible cover required – 7 hours+ – only pay for the hours you need to cover
- Customer Service – book collection, book shelving, photocopier, self-service machine maintenance, general student assistance
- We can provide staff to integrate with in-house library staff to provide reliable back up on a long term basis helping to cover vacation and sickness cover

*Your flexible partner for library cover*



# Best of both worlds



## Library Assistants

**Looking for high quality, customer focused evening library staff?**

We provide a reliable out of hours service, with staff managing front-line services and administrative duties.

We can provide high calibre, dedicated and enthusiastic staff who will be fully trained to provide the following services;

- Emptying self-service returns sorter bins/ trolleys and re-sensitizing stock
- Emptying trolleys and shelving/ moving stock
- Assist with directional and initial information enquiries, including assistance with the Online Public Access Catalogue (OPAC) and helping them to find books
- Assist users with the use of copiers and printers and restock paper trays
- Reporting faults
- Keeping the Library space in good order through regular tidying, clearing rubbish, shelving and filing
- Gather and record basic statistics such as head counts

0845 372 1995

[katrygn@reassurancesecurityservices.co.uk](mailto:katrygn@reassurancesecurityservices.co.uk)  
[www.reassurancesecurityservices.co.uk](http://www.reassurancesecurityservices.co.uk)

## Delegates

alphabetically by surname

Name	Job title	Organisation
Bethan Adams	Head of Research and Learning Information Services	University of Hertfordshire
Emma Adamson	Head of Library	Cardiff Metropolitan University
Jane Aiken	Assistant Director, Collections & Resources	Teesside University
Jo Alcock	Researcher Evidence Base	Birmingham City University
Alison Allden	Chief Executive	The Higher Education Statistics Agency
Mairi Anderson	Information Services Advisor	Edinburgh Napier University
Michelle Anderson	Director of Library Services	Robert Gordon University
Andy Appleyard	Head of Document Delivery and Customer Services	The British Library
Robert Atkinson	Director of Library and Media Services	Birkbeck, University of London
Debra Avent-Gibson	Faculty Librarian	University of Bristol
Paul Ayris	Director & Acting Group Manager	University College London
Lori Bailey	Head of Policy and Member Engagement	SCONUL
Danche Bakeva	Events Officer	SCONUL
Thomas Baldwin	Executive Manager	M25 Consortium of Academic Libraries
Chris Banks	Director of Library Services	Imperial College London
Richard Battersby	Head of Library Academic Support, User Services Division, Information Services	University of Edinburgh
Alison Baud	Director of Library Services	Bath Spa University
Laurence Bebbington	Deputy Librarian and Head of Library Services	University of Aberdeen
Julie Berry	University Librarian	University of Salford
Simon Bevan	Director of Library Services	Cranfield University
Kirsten Black	Director, Student and Learning Support	University of Sunderland
Elaine Blaxter	Head of Information Management	University of Strathclyde Glasgow

Name	Job title	Organisation
Debbi Boden-Angell	Director of Information Learning Services	York St John University
Sandra Bracegirdle	Head of Collection Management	University of Manchester
Ellen Breen	Head of Information & Public Services, Library	Dublin City University
Jason Briddon	Deputy Librarian	University of the West of England
Rachel Broadbent	Account Manager	Capita
Matthew Brooke	Associate Director, Academic and User Services	Royal Holloway University of London
Rachel Bruce	Director of technology innovation	Jisc
Margaret Buchan	Associate Director - Academic and Reader Services	Robert Gordon University
Ellen Buck	Head of Library and Learning Development	University Campus Suffolk
Stephen Bull	Subject Advisor	University of Birmingham
Duncan Campbell	Deputy Chief Executive	National Library of Scotland
Colin Carter	Director, EMEA Library Engagement	Innovative
Lesley Castens	Head of Library and Information Services	University of Gloucestershire
Elizabeth Chapman	Director of Library Services	London School of Economics and Political Science
Duncan Chappell	Academic Liaison Librarian	Glasgow School of Art
Phil Cheeseman	Head of Academic Services	Lancaster University
Pat Christie	Director of Libraries and Academic Support Services	University of the Arts London
Tracey Clarke	Assistant Director for Academic Services	University of Sheffield
David Clay	Associate University Librarian, Learning and Research Support	University of Salford
Pam Clouston	IS Helpdesk Manager	University of Edinburgh
David Clover	Associate Director, Modern Collections	Senate House Library University of London
Caroline Cochrane	Head of Information Services	Royal Conservatoire of Scotland
Philip Cohen	Head of Library Services	Dublin Institute of Technology

Name	Job title	Organisation
Janice Conway	Director of Library and Student Services	University for the Creative Arts
Vivien Cook	Account Manager, Ireland, Scotland and Wales	OCLC
Delphine Dallison	Graduate Trainee Librarian	Glasgow School of Art
Pete Dalton	Director of Evidence Base	Birmingham City University
Gillian Daly	Senior Information Officer	The Scottish Library and Information Council
Catriona Denoon	Library Services Manager	NHS Greater Glasgow and Clyde
Nuala Devlin	Director of Learning and Information Services	Sheffield Hallam University
John Dowd	Assistant Director, Planning and Business Development	University of Wolverhampton
Liam Earney	Senior Manager	Jisc Collections
Lorraine Estelle	Executive Director Content and Discovery and Divisional CEO	Jisc Collections
Jill Evans	Service Development Manager	SCURL
Martin Eve	Lecturer in English Literature	University of Lincoln
Regina Everitt	Assistant Director (Operations)	SOAS, University of London
Stuart Fancey	Assistant Director of Research and Innovation	Scottish Funding Council
Laine Farley	Executive Director of the California Digital Library	University of California
Rebecca Ferguson	Lecturer and Data Wrangler, Institute of Educational Technology	The Open University
Alexandra Follett	Key Account Manager	Ex Libris
Peter Foster	Key Account Manager, UK & Ireland	Cengage Learning EMEA Ltd
Christoph Frech	Regional Sales Director	Ex Libris
Jane Gosling	Head of Library and Digital Support	Plymouth University
Melanie Grant	Acquisition Services Manager	Wellcome Library
Roisin Gwyer	University Librarian	University of Portsmouth
Andrew Hall	Sales Manager, UK and Ireland	OCLC

Name	Job title	Organisation
Robert Hall	Director of Library Services and Employability	King's College London
Alison Harding	Head of Library and Learning Resources	University of Wales Trinity Saint David
Jan Howden	Interim University Librarian	University of the West of Scotland
Bill Hubbard	Director, Centre for Research Communications	University of Nottingham
Grace Hudson	Head of Library Services	University of Bradford
Kitty Inglis	Librarian	University of Sussex
Robert Jacobs	Sales Director, Northern Europe	Innovative
Erika Jagielko	Customer Services Manager, Library	University of Glasgow
John Jardine	Business Development Manager	Swets
Liam Jarnecki	Director of Student Engagement	National Union of Students
Ruth Jenkins	Head of Library Services	Manchester Metropolitan University
Larry Johnson	Chief Executive Officer	New Media Consortium
Jack Johnson	Researcher	ALCS
Liz Jolly	Director of Library and Information Services	Teesside University
Kara Jones	Head of Research Services, Library	University of Bath
Carol Kay	Head of Planning and Resources, Library	University of Liverpool
Judith Keene	University Librarian and Assistant Director, ILS	University of Worcester
Paula Keogh	Account Manager	Capita
Liz Kerr	Head of Learning Resources	Regents University London
Marian Kirton	Information Services Advisor	Edinburgh Napier University
Margaret Kitching	Director of Library and Learning Resources	London South Bank University
Matthew Lawson	Assistant Director, Library & Learner Development, Library & Student Support	Middlesex University
Caroline Lloyd	Head of Library and Archives Service	London School of Hygiene and Tropical Medicine

Name	Job title	Organisation
Margaret Lobban	Assistant Director Customer Services	Edinburgh Napier University
Ben Lund	Chief Technology Officer	Academia.edu
Rosemary Lynch	Director, Collection Care	Tate
Alison Mackenzie	Dean of Learning Services	Edge Hill University
Laura Macpherson	Head of Collections Development and Access	University of Edinburgh
Elizabeth Malone	Co-Director Library and Learning Services	Kingston University
Maja Maricevic	Head of Higher Education	The British Library
Sara Marsh	Director of Information Services	University of Bradford
Heather Marshall	Senior Librarian	Glasgow Caledonian University
Valerie McCutcheon	Research Information Manager, Library	University of Glasgow
Kathryn McGowan	Contract Director	Reassurance Security Services
Colette McKenna	Director of Library Services	University College Cork
Mike Mertens	Deputy Director and Data Services Manager	RLUK
Andy Miah	Professor of Ethics and Emerging Technologies & Director of the Creative Futures Institute	University of the West of Scotland
Bo Middleton	Head of Digital Library Services	University of Leeds
Claire Milburn	Senior Sales Manager	Swets
Marian Miller	Senior Librarian and Resource Manager at The Saltire Centre	Glasgow Caledonian University
Marie Montague	Assistant Director, Service Liaison and Support	Queen Mary University of London
Alice Moore	Performance and Business Analyst	The British Library
Cath Morgan	Assistant Director, Information Services: Library Services	University of Brighton
Elaine Muir	Head of Library Services	SRUC (Scotland's Rural College)
Julia Munro	University Librarian	University of Reading
SitMui Ng	Co-ordinator	SCONUL



Name	Job title	Organisation
Claire Norman	Administration Manager	Reassurance Security Services
Jo Norry	Director of Libraries and Learning Innovation	Leeds Metropolitan University
Anna O'Neill	Director of Learning and Information Services	University of Chichester
Gobnait O'Riordan	Director, Library and Information Services	University of Limerick
Barbara Pacut	Director, EMEA Sales	SirsiDynix
Joy Palmer	Senior Manager for Library and Archival Services at Mimas	University of Manchester
Andy Panayiotou	Account Manager	SirsiDynix
Janet Peden	University Librarian	University of Ulster
Catherine Phillpotts	Director of Library Services	London Metropolitan University
Doreen Pinfeld	Associate Director, Head of Academic Services	Falmouth University
Chris Porter	Director of Library and Learning Services	Newman University, Birmingham
Clare Powne	Head of Library and Culture Services	University of Exeter
Sarah Price	Assistant Director Collection Management and Development	University of Birmingham
Oliver Pritchard	Assistant Director Student and Learning Support	University of Sunderland
David Puplett	Drill Hall Library Manager	University of Greenwich
Phil Range	Director of Learning and Research Information Services	Manchester Metropolitan University
Alison Redpath	Acquisitions and Metadata Manager	Edinburgh Napier University
Lys Ann Reiners	Deputy Librarian	University of Lincoln
Paul Reynolds	University Librarian	Keele University
John Robinson	Director of Library and Information Services	SOAS, University of London

Name	Job title	Organisation
Andrew Robinson	Sales Director	Cengage Learning EMEA Ltd
Mike Roch	Director of Information Services	Heriot-Watt University
Caroline Rock	Director	University of Surrey
Steve Rose	Head of Library and Learning Services	Southampton Solent University
Ann Rossiter	Executive Director	SCONUL
Robert Ruthven	Director of Library Services	Glasgow Caledonian University
Gurdish Sandhu	Associate Director Information Strategy	University of East London
Emma Sansby	Head of Library Services	Bishop Grosseteste University
Carole Satchwell	Associate Director, Library and Archive Services	University of Westminster
John Scally	Director of Library and University Collections	University of Edinburgh
Martin Scarrott	Director of Library and Learning Technology	St Mary's University Twickenham
Susan Scorey	University Librarian	University of Roehampton
Amina Shah	CEO	Scottish Library and Information Council
Peter Shepherd	Director	COUNTER
Nicola Siminson	Institutional Repository and Records Manager	Glasgow School of Art
Gail Sinclair	Library Assistant	University of Glasgow
Christopher Skelton-Foord	Head of Policy and Planning, Durham University Library and Heritage Collections	Durham University
Anja Smit	University Librarian	Utrecht University
Alison Stevenson	Head of Learning Resources	Glasgow School of Art
Valerie Stevenson	Head of Academic Services, Library Services	Liverpool John Moores University
Caroline Taylor	University Librarian	University of Leicester
Mark Thorley	Chair	RCUK Research Outputs Network
Heather Thrift	Director, Library Services	Liverpool John Moores University

Name	Job title	Organisation
Peter Tinson	Executive Director	UCISA
Mark Toole	Head of Libraries and Learning Resources	Nottingham Trent University
Stephen Town	Director of Information and University Librarian	University of York
Trudy Turner	Assistant Director, Library Collections	University of Kent
Richard Wake	Deputy Librarian	University of Southampton
Tim Wales	Director of Library Services	University of West London
Catherine Walsh	Director of Library and Learning Services	University of East London
Jo Webb	Director of Library and Learning Services	De Montfort University
Verena Weigert	Senior Technology Innovation Manager	Jisc
Sue White	Director of Computing and Library Services	University of Huddersfield
Caroline Wilkinson	Open Access Relationship Manager	Ubiquity Press Ltd
Sally Wilkinson	Head of Barrington Library	Cranfield University
Caroline Williams	Director of Libraries, Research and Learning Resources	The University of Nottingham
Steve Williams	Deputy Director, Information Services and Systems	Swansea University
John Williams	Head of Collections Management and Digital Library Services	Newcastle University
Graham Woodruff	Customer Sales Account Manager	Innovative
Katy Woolfenden	Head of Teaching, Learning and Students	The University of Manchester
Marcus Woolley	Deputy Director of Learning Resources and Student Services	University of Bedfordshire
Helen Workman	Director of Learning Resources	Oxford Brookes University
Dilys Young	Librarian and Assistant Director	University of Strathclyde



The diagram features a central red circle with the word "swets" in white lowercase letters. This circle is surrounded by a dark grey ring divided into three segments: "Selection Management" at the top, "Research Productivity" on the left, and "Access Management" on the right. The entire diagram is set within a light grey circular background.

Together we are  
**redefining** *the library.*  
And it's  
**powerful stuff.**

<p><b>The redefined library validates every content purchase.</b> <i>Swets makes content procurement efficient. Collection decisions are streamlined and value-based.</i></p>	<p><b>The redefined library extends virtual outreach.</b> <i>Swets brings your library to its users. Access whenever. Access wherever.</i></p>	<p><b>The redefined library is all about collaboration and productivity.</b> <i>Swets facilitates seamless connectivity. Discover forms within, between and across communities.</i></p>
---	--	---

Harness the power of your information. Harness the power of Swets.  
**[www.swets.com](http://www.swets.com)**

## Glasgow School of Art Library

The Glasgow School of Art's iconic Mackintosh Library, designed by Charles Rennie Mackintosh between 1897 and 1909, has been lost in fire. The Library and all of its historical contents are destroyed, although the Main Library, including all the lending collections, remains unaffected.

The Governors, staff and students of The Glasgow School of Art recognise and are thankful for all the support and sympathy they have received. They have now opened various channels through which assistance and help can be offered.

For more information, please visit <http://www.gsa.ac.uk/support-gsa/how-to-support/mackintosh-building-fire-fund/>



## Welcome to the University Libraries in Glasgow

If you have some time on your hands as a SCONUL conference delegate why not visit us and find out more about our spaces, collections and services. Below is a short introduction to the key features of each library along with contact details for your visit. All the libraries extend a warm welcome for your visit and we look forward to seeing you in Glasgow.

### The University of Glasgow Library

The University of Glasgow Library is one of the largest university libraries in Europe having been in existence since the foundation of the University in 1451. We hold many unique and distinctive collections, attracting scholars from around the world. If there is any specific item you wish to see please alert us in advance.

[www.gla.ac.uk/services/library/collections/](http://www.gla.ac.uk/services/library/collections/)  
[www.gla.ac.uk/services/specialcollections/introductiontoourcollections/](http://www.gla.ac.uk/services/specialcollections/introductiontoourcollections/)

In June the foyer display on Level 12, where our rare books and manuscripts are housed, will feature material from the papers of Edwin Morgan (1920-2010), one of the foremost Scottish poets of the 20th century, who had a long association with the University of Glasgow, as a student and member of staff. (There are also great views from here north over Glasgow and to the hills.)

The library building is at the centre of the student experience at Glasgow – over 1.7 million people visited last year. Over the past decade the University has spent around £10 million on refurbishment of

the current building constructed in 1968. A major project to replace the original cladding panels with a new aluminium rain screen system was completed last year. This will prolong the life of the building by an estimated 50 years, while delivering energy savings of around 50% and considerably enhancing the external appearance.



The building is open 361 days a year from 07:00-02:00 serving a student population of over 23,000. The library is a short walk from Hillhead Underground. E-mail [library@lib.gla.ac.uk](mailto:library@lib.gla.ac.uk) or call 0141 330 6704 to arrange your visit,.

### Glasgow Caledonian University Library

GCU's library, the iconic Saltire Centre, was opened in 2006. It is the winner of numerous awards for its revolutionary architectural design and has been hailed as rewriting the design book for academic libraries. Hugely popular with students, it forms the centrepiece of GCU's campus. The library offers a full range of study spaces meeting the need for social space as well as individual and group study.



It acts as a central point of contact for student services across the University. GCU is currently embarking on a major £30m, three year "Heart of the Campus" building project. The library is taking this opportunity to build on the successes of the eight years since the library opened and to implement changes based on lessons learned. Contact: [baseline@gcu.ac.uk](mailto:baseline@gcu.ac.uk) or call 0141 273 1000.

### The Andersonian Library, University of Strathclyde

The current Andersonian Library dates from 1980 and is based in the Curran Building on Cathedral Street, about 15 minutes' walk from Central Station and the conference venue. In recent years a programme of refurbishment has led to the development of a range of high quality learning spaces for individual academic study, group study and collaborative learning.

The move to RFID self service in the summer of 2013 has enabled us to integrate our enquiry services and provide enhanced roving support. Updating our spaces has also enabled us to update our

marketing and publicity image. As 'the place of useful learning' Strathclyde has a rich heritage, reflected in our important archives and special collections and our library, positioning itself at the heart of the student experience, uses this to engage its different customers.



Come and talk to us about how our campaigns and feedback initiatives enable us to understand what our students and staff need and are used in our service planning. See how our new approach to marketing and branding our services help create a strong visual identity, working in partnership with our customers to deliver the spaces, materials and services they need. Contact: [library@strath.ac.uk](mailto:library@strath.ac.uk) or call: 0141 548 4444 to arrange your visit.

# TRANSFORMING THE RESEARCH EXPERIENCE



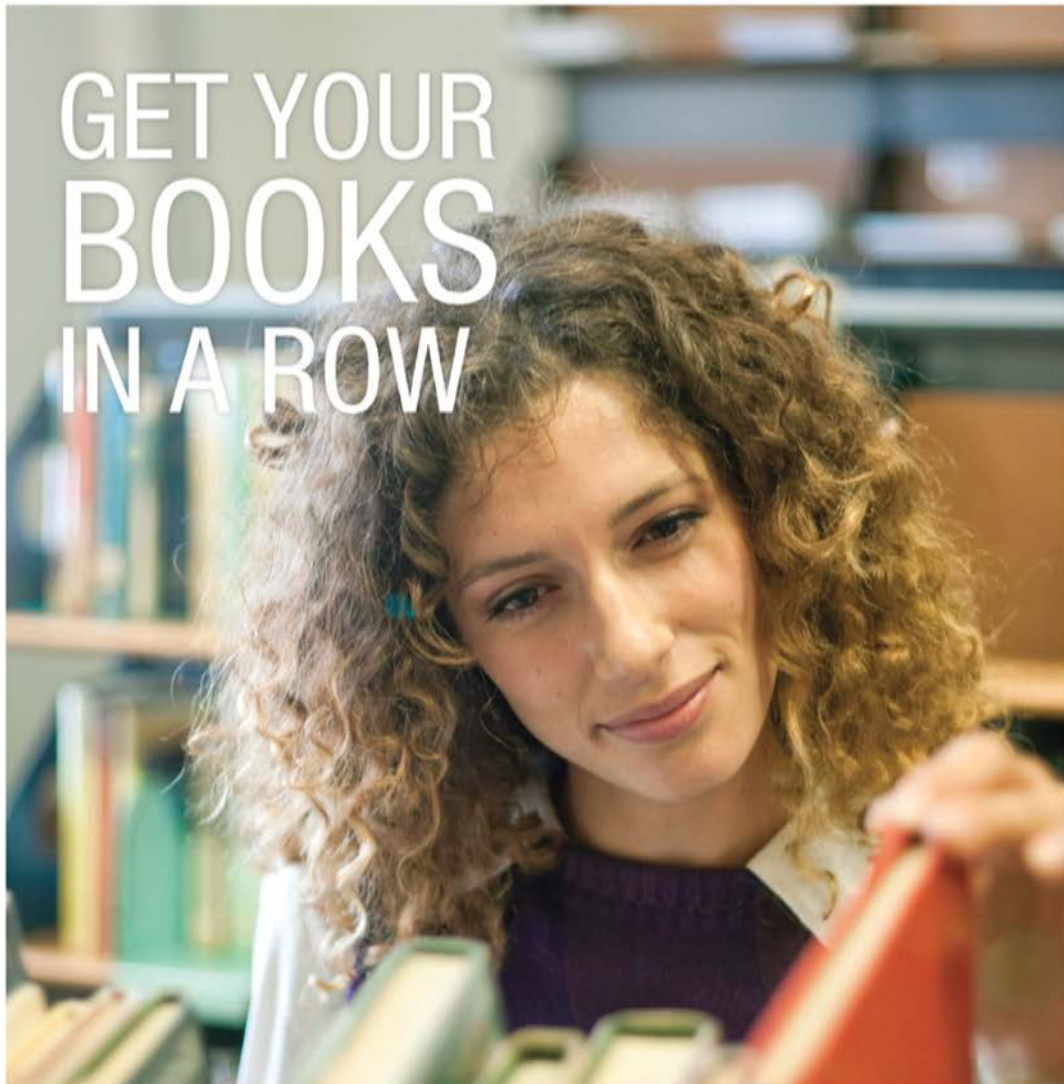
START  
HERE

## WHAT CHALLENGES CAN WE HELP YOU SOLVE?

- Cost effective delivery of key primary and secondary source research materials
- Providing essential tools to improve discoverability across collections
- Improving interdisciplinary research outcomes by enabling researchers to find, review and share information







# GET YOUR BOOKS IN A ROW

More than 100 different cataloguing and processing options tailored to fit your library's specific needs. Count on Ingram Coutts for a job well done.

**Learn more at [www.ingramcontent.com/libraries](http://www.ingramcontent.com/libraries)**

**INGRAM.**



## Welcome Drinks Reception

For delegates arriving in Glasgow the evening before the conference on 25 June, there will be a drinks reception between 18.30 and 20.00. This is a relatively informal event where dress will be smart-casual or business attire. Please feel free to attend for as long as it suits your travel and other arrangements.

The reception is being held at the Deli Central bar of the Grand Central Hotel. There will be a selection of canapés served, with wine and soft drinks available. A welcome glass of prosecco will be served to delegates on arrival.



We are very grateful to Innovate Interfaces Inc. for the kind sponsorship which has made this event possible.



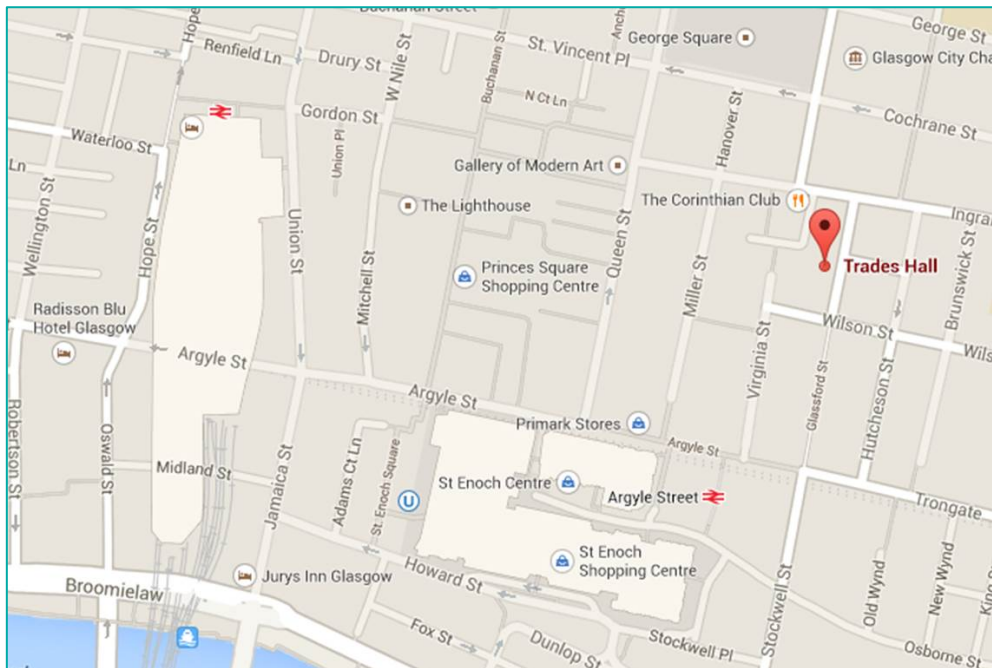
### Informal dinner arrangements

We will also be arranging a series of informal groups to head off to local restaurants following the reception. If you're interested in joining one of these, please make yourself known to a member of SCONUL staff at the reception or beforehand, and we will make sure that you are included.

## Conference Dinner

The Conference Dinner is being held at The Trades Hall, 85 Glasshouse Street, Glasgow G1 1UH which is a short walk from the conference hotel (of approximately 10 minutes).

Dinner will be accompanied by music on the harp, provided by Ewelina Brzozowska of the Royal Conservatoire of Scotland.



### Arrangements for dinner

18.30	Gather in reception of conference hotel
19.00	Pre-dinner drinks in the Saloon, Trades Hall
19.45	Move into Grand Hall for dinner
22.00 - 22.30	Close
22.00 onwards	The Corinthian Club is available to diners. Please make yourself known to the Trades Hall Duty Manager if you wish to make use of these facilities. 191 Ingram Street, Glasgow G1 1DA <a href="http://www.thecorinthianclub.co.uk">www.thecorinthianclub.co.uk</a>

## Dinner menu

### *Starter*

*Smoked salmon mousse with citrus dressing and brown bread  
Salad of chicory and celeriac remoulade with a citrus dressing  
and roasted pine nuts (v)*

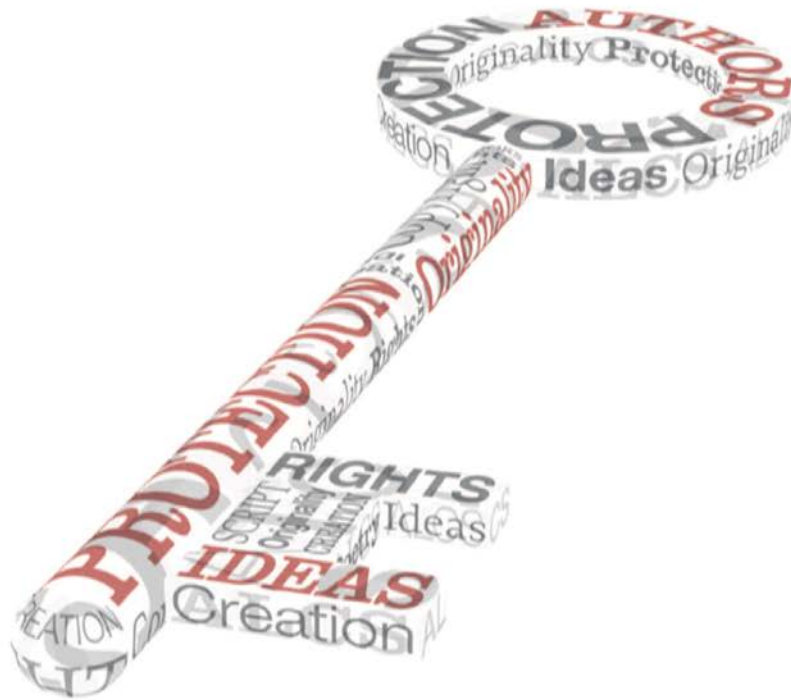
### *Main Course*

*Roast leg of lamb with sweet potato and carrot puree, seasonal  
vegetables and thyme jus  
Creamy butternut squash and wilted spinach risotto with pea  
shoot and parmesan salad (v)*

### *Dessert*

*Crisp shortbread gâteau layered with fresh strawberries and  
vanilla cream and a rich port wine syrup*





## Have you ever had anything you've written published?

If you've written a book or had an article published, the Authors' Licensing & Collecting Society (ALCS) could be holding money owed to you. ALCS collects secondary royalties earned from a number of sources including the photocopying and scanning of books.

Unlock more information about how you could benefit by visiting [www.alcs.co.uk](http://www.alcs.co.uk)



# Gale NewsVault™

Search. Explore. Discover.

## Coming soon to Gale NewsVault



*Punch Historical Archive 1841-1992*



*The Independent Digital Archive 1986-2012*

## Available now



*17th & 18th Century Bury Collection Newspapers*



*Picture Post Historical Archive*



*19th Century British Library Newspapers*



*The Economist Historical Archive*



*19th Century UK Periodicals*



*The Illustrated London News Historical Archive 1842-2003*



*19th Century US Newspapers*



*The Listener Historical Archive 1929-1991*



*British Newspapers 1600-1950*



*The Sunday Times Digital Archive*



*Daily Mail Historical Archive 1896-2004*



*The Times Digital Archive*



*Financial Times Historical Archive*



*Times Literary Supplement Historical Archive*



*Liberty Magazine Historical Archive*

## Gale NewsVault

The definitive cross-search experience for Gale's range of historic newspapers.

*Gale NewsVault* delivers the definitive cross-searching experience for exploring Gale's range of historical newspaper collections, including *The Times Digital Archive*, *Picture Post* and *The Listener*. Providing access to over 11 million digitised facsimile pages, and more than 400 years of content, *Gale NewsVault* provides an unparalleled window to the past.



[gale.cengage.co.uk/newsvault](http://gale.cengage.co.uk/newsvault)

[emea.galereply@cengage.com](mailto:emea.galereply@cengage.com)

**Parallel sessions**  
**Thursday 26 June 14.00**

Details	Outline
<p><b>Subscriptions and APCs</b></p> <p><b>Lorraine Estelle</b>, Executive Director Content and Discovery, Jisc and Divisional CEO, Jisc Collections</p> <p><b>Wellington Room</b></p>	<p>This session will discuss the data collected by Jisc Collections on institutional spend on article processing charges (APCs) and journal subscriptions. It will describe how this data has enabled the modelling of the Total Cost of Ownership and the offset systems that would alleviate this cost. Lorraine Estelle will outline the publishers' responses to requests for offset systems and how the community can help Jisc Collections in these negotiations.</p>
<p><b>Systems and psychologies – developing closer relationships with research offices</b></p> <p><b>Valerie McCutcheon</b>, Research Information Manager, University of Glasgow</p> <p><b>Buchanan Room</b></p>	<p>Do you ever think there must be better ways to deliver Open Access requirements in conjunction with other support offices in your organisation? You are not alone. A short introductory case study will give some views from research office and library perspectives as well as examples of successful working together. Then it will be over to the attendees for interactive issue identification, prioritisation, and sharing of ideas to resolve these. The attendees will decide what has to be discussed so bring along your concerns and ideas relating to working more closely with other services to deliver open access in the widest sense. A short summary of the issues identified, discussion around these, and any actions identified will be collated, and in the spirit of open access made publicly available. No one will be identified without explicit permission.</p>
<p><b>Open access and the REF</b></p> <p><b>Dr Stuart Fancey</b>, Assistant Director, Research and Innovation, Scottish Funding Council</p> <p><b>Great Western Room</b></p>	<p>The decision by the four funding bodies of the UK to mandate open access publication for journal articles as a pre-requisite for submission to research assessment exercises subsequent to REF2014 is a significant contribution to the widespread policy shift in the area of dissemination of research and scholarship. This session will discuss the policy the higher education funding bodies are pursuing, the implementation of that policy in post REF research assessment and the wider policy and practice of open access as SFC views it.</p>

**The future of open access and the role of the Library**

This session will look at the current status of open access in the UK and how changes in funding, policy and technology are likely to affect the OA environment in the future. We will look at new and emerging publisher business models, different forms of open access and how the university librarian fits into this rapidly changing picture.

**Caroline Wilkinson,**  
Open Access  
Relationship Manager,  
Ubiquity Press Ltd

**Hamilton Room**

**Libraries and open research data –whose role is it anyway?**

This session will focus on Jisc research data management activity in the context of the move towards open research data. Rachel will set out the roles of stakeholders in the UK with regards to research data management and how Jisc activities, working with the sector, relate to these. The session will show what activities are underway including new initiatives such as the journal data policy registry and the Jisc Co-design Challenge, Research at Risk. The responses for potential activities received through consultation so far will be shared. There will be an opportunity for delegates to respond to this challenge and say what they think needs done or considered.

**Rachel Bruce,** Director  
of Technology  
Innovation, Jisc

**Clyde Room**



**Parallel sessions**  
**Friday 27 June, 13.45**

Details	Outline
<p><b>Value and impact of academic libraries: experiences and approaches</b></p> <p><b>Pete Dalton</b>, Director and <b>Jo Alcock</b>, Researcher, Evidence Base, Birmingham City University</p> <p><b>Clyde Room</b></p>	<p>SCONUL have commissioned Evidence Base at Birmingham City University to undertake a project on the Value and Impact of Academic Libraries. The project will review existing studies, projects and statistics to develop resources for use by SCONUL Executive Board and SCONUL members. The first part of the session will introduce the project and give participants an opportunity to influence the study and provide feedback. The second part of the session will focus on sharing experience and will be an opportunity to share information on how library staff currently demonstrate the value and impact of library services, and the methods and data used to do so. Participants will come away from the session with further ideas for measuring value and impact, and an opportunity to shape the SCONUL Value and Impact of Academic Libraries study.</p>
<p><b>Using analytics to inform library practice</b></p> <p><b>Joy Palmer</b>, Senior Manager for Library and Archival Services, Mimas</p> <p><b>Great Western Room</b></p>	<p>Joy Palmer from Mimas will be discussing the new prototype shared library analytics service for UK academic libraries developed by Jisc and showing how libraries can capitalise on the many types of data they capture in day-to-day activities, using this to support the improvement and development of new services and demonstrate value and impact in new ways across the institution.</p>
<p><b>New usage-based measures of impact in the context of altmetrics</b></p> <p><b>Dr Peter T Shepherd</b>, Director, COUNTER</p> <p><b>Hamilton Room</b></p>	<p>The inadequacy of currently available citation-based bibliometrics tools for measuring the impact of research and researchers has been recognised for a number of years. The transformation of journals into online publications with a range of new features has created opportunities for new approaches to this and has led to the emergence of some novel forms of impact measurement – altmetrics – that are both impressive and startling. This presentation provides an overview of current initiatives in altmetrics and describes new, usage-based metrics developed by COUNTER that are important in this context. First, the new COUNTER Code of Practice for Articles, which allows the recording and reporting of usage at the article level. Second, the COUNTER Code of Practice for Usage Factors, for measuring the impact of research at the journal level. Both these initiatives also have potential as measures of impact at the level of the individual article or scholar.</p>

Details	Outline
<p><b>Using BI data and information for insights, performance and planning</b></p> <p><b>Alison Allden</b>, Chief Executive, Higher Education Statistics Agency</p> <p><b>Buchanan Room</b></p>	<p>This session will look at learning from the project undertaken by HESA which aimed to build capacity and capability within the UK HE sector to undertake and gain business benefits from benchmarking activities. The project comprised a number of inter-related objectives and actions in the areas of developing and sharing knowledge and good practice, establishing senior management engagement and drive, developing methodologies, tools and frameworks, mapping data sources for benchmarking and learning from the experiences of other sectors.</p>
<p><b>The role and impact of learning analytics in universities</b></p> <p><b>Dr Rebecca Ferguson</b>, Lecturer and Data Wrangler, Institute of Educational Technology, Open University</p> <p><b>Wellington Room</b></p>	<p>What are learning analytics, and how can we make effective use of them? Rebecca Ferguson will draw on examples from research and practice to look at how these analytics can be implemented effectively within our universities. She will also examine the possibilities and challenges that are associated with the use and combination of different data sets. The session will end with a discussion of how analytics are being developed and deployed within university libraries.</p>

## Thursday 26<sup>th</sup> June

**Lorraine Estelle, Executive Director Content and Discovery, Jisc**

*Subscriptions and APCs* Wellington Room

Name	Job Title	Institution
Bethan Adams	Head of Research and Learning Information Services	University of Hertfordshire
Thomas Baldwin	Executive Manager	M25 Consortium of Academic Libraries
Alison Baud	Director of Library Services	Bath Spa University
Laurence Bebbington	Deputy Librarian and Head of Library Services	University of Aberdeen
Debbi Boden-Angell	Director of Information Learning Services	York St John University
Sandra Bracegirdle	Head of Collection Management	The University of Manchester
Stephen Bull	Subject Advisor	University of Birmingham
David Clay	Associate University Librarian, Learning and Research Support	University of Salford
Janice Conway	Director of Library and Student Services	University for the Creative Arts
Vivien Cook	Account Manager, Ireland, Scotland and Wales	OCLC
Jill Evans	Service Development Manager	SCURL
Alexandra Follett	Key Account Manager	Ex Libris
Melanie Grant	Acquisition Services Manager	Wellcome Library
Jan Howden	Interim University Librarian	University of the West of Scotland
Grace Hudson	Head of Library Services	University of Bradford
John Jardine	Business Development Manager	Swets
Laura Macpherson	Head of Collections Development and Access	University of Edinburgh
Julia Munro	University Librarian	University of Reading
Jo Norry	Director of Libraries and Learning Innovation	Leeds Metropolitan University
Doreen Pinfold	Associate Director, Head of Academic Services	Falmouth University
Oliver Pritchard	Assistant Director Student and Learning Support	University of Sunderland
Lys Ann Reiners	Deputy Librarian	University of Lincoln
Paul Reynolds	University Librarian	Keele University
Richard Wake	Deputy Librarian	University of Southampton

**Valerie McCutcheon, Research Information Manager, University of Glasgow**  
*Systems and psychologies: developing closer relationships with research offices*  
 Buchanan Room

Name	Job Title	Institution
Mairi Anderson	Information Services Advisor	Edinburgh Napier University
Simon Bevan	Director of Library Services	Cranfield University
Pat Christie	Director of Libraries and Academic Support Services	University of the Arts London
Tracey Clarke	Assistant Director for Academic Services	University of Sheffield
David Clover	Associate Director, Modern Collections	Senate House Library University of London
Caroline Cochrane	Head of Information Services	Royal Conservatoire of Scotland
Kitty Inglis	Librarian	University of Sussex
Kara Jones	Head of Research Services, Library	University of Bath
Carol Kay	Head of Planning and Resources, Library	University of Liverpool
Liz Kerr	Head of Learning Resources	Regents University London
Margaret Kitching	Director of Library and Learning Resources	London South Bank University
Rosemary Lynch	Director, Collection Care	Tate
Cath Morgan	Assistant Director, Information Services: Library Services	University of Brighton
Catherine Phillpotts	Director of Library Services	London Metropolitan University
Susan Scorey	University Librarian	University of Roehampton
Alison Stevenson	Head of Learning Resources	Glasgow School of Art
Caroline Taylor	University Librarian	University of Leicester
Sally Wilkinson	Head of Barrington Library	Cranfield University
Caroline Williams	Director of Libraries, Research and Learning Resources	The University of Nottingham

**Dr Stuart Fancey, Assistant Director, Research and Innovation, SFC**

*Open access and the REF* Great Western Room

Name	Job Title	Institution
Emma Adamson	Head of Library	Cardiff Met. University
Jane Aiken	Assistant Director, Collections & Resources	Teesside University
Michelle Anderson	Director of Library Services	Robert Gordon University
Debra Avent-Gibson	Faculty Librarian	University of Bristol
Chris Banks	Director of Library Services	Imperial College London
Lesley Castens	Head of Library and Information Services	University of Gloucestershire
Elizabeth Chapman	Director of Library Services	LSE
Liam Earney	Senior Manager	Jisc Collections
Andrew Hall	Sales Manager, UK and Ireland	OCLC
Alison Harding	Head of Library and Learning Resources	University of Wales Trinity Saint David
Erika Jagielko	Customer Services Manager, Library	University of Glasgow
Alison Mackenzie	Dean of Learning Services	Edge Hill University
Elizabeth Malone	Co-Director Library and Learning Services	Kingston University
Maja Maricevic	Head of Higher Education	The British Library
Sara Marsh	Director of Information Services	University of Bradford
Elaine Muir	Head of Library Services	SRUC
Janet Peden	University Librarian	University of Ulster
Sarah Price	Assistant Director Collection Management and Development	University of Birmingham
Mike Roch	Director of Information Services	Heriot-Watt University
Caroline Rock	Director	University of Surrey
Christopher Skelton-Foord	Head of Policy and Planning, Durham University Library and Heritage Collections	Durham University
Valerie Stevenson	Head of Academic Services, Library Services	Liverpool John Moores
Stephen Town	Director of Information & University Librarian	University of York
Tim Wales	Director of Library Services	University of West London
Jo Webb	Director of Library and Learning Services	De Montfort University
Verena Weigert	Senior Technology Innovation Manager	Jisc
John Williams	Head of Collections Management and Digital Library Services	Newcastle University
Steve Williams	Deputy Director, Information Services & Systems	Swansea University
Phil Range	Director of Learning & Research Information Services	Manchester Metropolitan University
Catherine Walsh	Director of Library and Learning Services	University of East London

**Caroline Wilkinson, Open Access Relationship Manager, Ubiquity Press Ltd**

*The future of Open Access and the role of the Library* Hamilton Room

Name	Job Title	Institution
Robert Atkinson	Director of Library and Media Services	Birkbeck, University of London
Duncan Chappell	Academic Liaison Librarian	Glasgow School of Art
Catriona Denoon	Library Services Manager	NHS Greater Glasgow and Clyde
John Dowd	Assistant Director, Planning and Business Development	University of Wolverhampton
Caroline Lloyd	Head of Library and Archives Service	London School of Hygiene and Tropical Medicine
Marie Montague	Assistant Director, Service Liaison and Support	Queen Mary University of London
Anna O'Neill	Director of Learning and Information Services	University of Chichester
Chris Porter	Director of Library and Learning Services	Newman University, Birmingham
John Robinson	Director of Library and Information Services	SOAS, University of London
Steve Rose	Head of Library and Learning Services	Southampton Solent University
Emma Sansby	Head of Library Services	Bishop Grosseteste University
Amina Shah	CEO	Scottish Library and Information Council
Nicola Siminson	Institutional Repository and Records Manager	Glasgow School of Art
Heather Thrift	Director, Library Services	Liverpool John Moores University
Mark Toole	Head of Libraries and Learning Resources	Nottingham Trent University
Sue White	Director of Computing and Library Services	University of Huddersfield
Katy Woolfenden	Head of Teaching, Learning and Students	The University of Manchester
Marcus Woolley	Deputy Director of Learning Resources and Student Services	University of Bedfordshire

**Rachel Bruce, Director of Technology Innovation, Jisc**

*Libraries and open research data – whose role is it anyway?* Clyde room

Name	Job Title	Institution
Richard Battersby	Head of Library Academic Support, User Services Division, Information Services	University of Edinburgh
Julie Berry	University librarian	University of Salford
Kirsten Black	Director, Student and Learning Support	University of Sunderland
Ellen Breen	Head of Information & Public Services, Library	Dublin City University
Jason Briddon	Deputy Librarian	University of the West of England
Matthew Brooke	Associate Director, Academic and User Services	Royal Holloway University of London
Margaret Buchan	Associate Director, Academic and Reader Services	Robert Gordon University
Colin Carter	Director, EMEA Library Engagement	Innovative
Phil Cheeseman	Head of Academic Services	Lancaster University
Delphine Dallison	Graduate Trainee Librarian	Glasgow School of Art
Regina Everitt	Assistant Director (Operations)	SOAS, University of London
Christoph Frech	Regional Sales Director	Ex Libris
Jane Gosling	Head of Library and Digital Support	Plymouth University
Roisin Gwyer	University Librarian	University of Portsmouth
Robert Hall	Director of Library Services and Employability	King's College London
Ruth Jenkins	Head of Library Services	Manchester Metropolitan University
Liz Jolly	Director of Library and Information Services	Teesside University
Judith Keene	University Librarian and Assistant Director, ILS	University of Worcester
Colette McKenna	Director of Library Services	University College Cork
Bo Middleton	Head of Digital Library Services	University of Leeds
Gobnait O'Riordan	Director, Library and Information Services	University of Limerick
Robert Ruthven	Director of Library Services	Glasgow Caledonian University
Gurdish Sandhu	Associate Director Information Strategy	University of East London
Carole Satchwell	Associate Director, Library and Archive Services	University of Westminster
John Scally	Director of Library and University Collections	University of Edinburgh
Peter Tinson	Executive Director	UCISA
Trudy Turner	Assistant Director, Library Collections	University of Kent
Helen Workman	Director of Learning Resources	Oxford Brookes University
Dilys Young	Librarian and Assistant Director	University of Strathclyde

Friday 27<sup>th</sup> June

**Pete Dalton, Director and Jo Alcock, Researcher, Evidence Base**

*Value and Impact of Academic Libraries: experiences and approaches* Clyde Room

Name	Job Title	Institution
Emma Adamson	Head of Library	Cardiff Metropolitan University
Thomas Baldwin	Executive Manager	M25 Consortium
Laurence Bebbington	Deputy Librarian and Head of Library Services	University of Aberdeen
Julie Berry	University Librarian	University of Salford
Ellen Breen	Head of Information & Public Services, Library	Dublin City University
Matthew Brooke	Associate Director, Academic and User Services	Royal Holloway University of London
Ellen Buck	Head of Library and Learning Development	University Campus Suffolk
Pat Christie	Director of Libraries and Academic Support Services	University of the Arts London
David Clover	Associate Director, Modern Collections	Senate House Library University of London
Caroline Cochrane	Head of Information Services	Royal Conservatoire of Scotland
Catriona Denoon	Library Services Manager	NHS Greater Glasgow and Clyde
Alexandra Follett	Key Account Manager	Ex Libris
Roisin Gwyer	University Librarian	University of Portsmouth
Andrew Hall	Sales Manager, UK and Ireland	OCLC
Alison Harding	Head of Library and Learning Resources	University of Wales Trinity Saint David
Ruth Jenkins	Head of Library Services	Manchester Metropolitan University
Carol Kay	Head of Planning and Resources, Library	University of Liverpool
Judith Keene	University Librarian and Assistant Director, ILS	University of Worcester
Liz Kerr	Head of Learning Resources	Regents University London
Margaret Kitching	Director of Library and Learning Resources	London South Bank University
Alison Mackenzie	Dean of Learning Services	Edge Hill University
Colette McKenna	Director of Library Services	University College Cork
Sara Marsh	Director of Information Services	University of Bradford
Elaine Muir	Head of Library Services	SRUC (Scotland's Rural College)
Gobnait O'Riordan	Director, Library and Information Services	University of Limerick
Janet Peden	University Librarian	University of Ulster
Doreen Pinfold	Associate Director, Head of Academic Services	Falmouth University
Oliver Pritchard	Assistant Director Student and Learning Support	University of Sunderland
Lys Ann Reiners	Deputy Librarian	University of Lincoln
Paul Reynolds	University Librarian	Keele University
Richard Wake	Deputy Librarian	University of Southampton



**Joy Palmer, Senior Manager, Library and Archival Services, Mimas**

*Using analytics to inform library practice* Great Western Room

Name	Job Title	Institution
Robert Atkinson	Director of Library and Media Services	Birkbeck, University of London
Richard Battersby	Head of Library Academic Support, User Services Division, Information Services	University of Edinburgh
Alison Baud	Director of Library Services	Bath Spa University
Debbi Boden-Angell	Director of Information Learning Services	York St John University
Simon Bevan	Director of Library Services	Cranfield University
Sandra Bracegirdle	Head of Collection Management	University of Manchester
Jason Briddon	Deputy Librarian	University of the West of England
Margaret Buchan	Associate Director - Academic and Reader Services	Robert Gordon University
Lesley Castens	Head of Library and Information Services	University of Gloucestershire
David Clay	Associate University Librarian, Learning and Research Support	University of Salford
Pam Clouston	IS Helpdesk Manager	University of Edinburgh
Philip Cohen	Head of Library Services	Dublin Institute of Technology
Gillian Daly	Senior Information Officer	SLIC
Regina Everitt	Assistant Director (Operations)	SOAS, University of London
Christoph Frech	Regional Sales Director	Ex Libris
Jane Gosling	Head of Library and Digital Support	Plymouth University
Melanie Grant	Acquisition Services Manager	Wellcome Library
Jan Howden	Interim University Librarian	University of the West of Scotland
Kitty Inglis	Librarian	University of Sussex
Marian Kirton	Information Services Advisor	Edinburgh Napier University
Marie Montague	Assistant Director, Service Liaison and Support	Queen Mary University of London
Jo Norry	Director of Libraries and Learning Innovation	Leeds Metropolitan University
Catherine Phillpotts	Director of Library Services	London Metropolitan University
Robert Ruthven	Director of Library Services	Glasgow Caledonian University
Carole Satchwell	Associate Director, Library and Archive Services	University of Westminster
Susan Scorey	University Librarian	University of Roehampton
Mark Toole	Head of Libraries and Learning Resources	Nottingham Trent University
Catherine Walsh	Director of Library and Learning Services	University of East London
Sally Wilkinson	Head of Barrington Library	Cranfield University
Caroline Williams	Director of Libraries, Research and Learning Resources	The University of Nottingham
John Williams	Head of Collections Management and Digital Library Services	Newcastle University
Dilys Young	Librarian and Assistant Director	University of Strathclyde

## Dr Peter Shepherd, Director, COUNTER

*New usage-based measures of impact in the context of altmetrics* Hamilton Room

Name	Job Title	Institution
Debra Avent-Gibson	Faculty Librarian	University of Bristol
Chris Banks	Director of Library Services	Imperial College London
Duncan Chappell	Academic Liaison Librarian	Glasgow School of Art
Tracey Clarke	Assistant Director for Academic Services	University of Sheffield
Lorraine Estelle	Executive Director Content and Discovery and Divisional CEO	Jisc Collections
Laura Macpherson	Head of Collections Development and Access	University of Edinburgh
Maja Maricevic	Head of Higher Education	The British Library
Clare Powne	Head of Library and Culture Services	University of Exeter
Alison Redpath	Acquisitions and Metadata Manager	Edinburgh Napier University
Caroline Rock	Director	University of Surrey
Steve Rose	Head of Library and Learning Services	Southampton Solent University
Valerie Stevenson	Head of Academic Services, Library Services	Liverpool John Moores University
Caroline Taylor	University Librarian	University of Leicester
Trudy Turner	Assistant Director, Library Collections	University of Kent
Tim Wales	Director of Library Services	University of West London
Verena Weigert	Senior Technology Innovation Manager	Jisc
Steve Williams	Deputy Director, Information Services and Systems	Swansea University

**Alison Alden, Chief Executive, Higher Education Statistics Agency**

*Using BI data and information for insights, performance and planning*

Buchanan Room

Name	Job Title	Institution
Bethan Adams	Head of Research and Learning Information Services	University of Hertfordshire
Lori Bailey	Head of Policy and Member Engagement	SCONUL
Rachel Bruce	Director of technology innovation	Jisc
John Dowd	Assistant Director, Planning and Business Development	University of Wolverhampton
Liam Earney	Senior Manager	Jisc Collections
Bill Hubbard	Director of the Centre for Research Communications	University of Nottingham
Grace Hudson	Head of Library Services	University of Bradford
Liz Jolly	Director of Library and Information Services	Teesside University
Kara Jones	Head of Research Services, Library	University of Bath
Bo Middleton	Head of Digital Library Services	University of Leeds
Sarah Price	Assistant Director Collection Management and Development	University of Birmingham
Phil Range	Director of Learning and Research Information Services	Manchester Metropolitan University
John Robinson	Director of Library and Information Services	SOAS, University of London
Gurdish Sandhu	Associate Director Information Strategy	University of East London
Emma Sansby	Head of Library Services	Bishop Grosseteste University
Christopher Skelton-Foord	Head of Policy and Planning, Durham University Library and Heritage Collections	Durham University
Alison Stevenson	Head of Learning Resources	Glasgow School of Art
Marcus Woolley	Deputy Director of Learning Resources and Student Services	University of Bedfordshire

**Dr Rebecca Ferguson, Lecturer and Data Wrangler at the Institute of Educational Technology, Open University**

*The role and impact of learning analytics in universities* Wellington Room

Name	Job Title	Institution
Jane Aiken	Assistant Director, Collections & Resources	Teesside University
Michelle Anderson	Director of Library Services	Robert Gordon University
Kirsten Black	Director, Student and Learning Support	University of Sunderland
Phil Cheeseman	Head of Academic Services	Lancaster University
Janice Conway	Director of Library and Student Services	University for the Creative Arts
Vivien Cook	Account Manager, Ireland, Scotland and Wales	OCLC
Robert Hall	Director of Library Services and Employability	King's College London
Erika Jagielko	Customer Services Manager, Library	University of Glasgow
Margaret Lobban	Assistant Director Customer Services	Edinburgh Napier University
Elizabeth Malone	Co-Director Library and Learning Services	Kingston University
Cath Morgan	Assistant Director, Information Services: Library Services	University of Brighton
Chris Porter	Director of Library and Learning Services	Newman University, Birmingham
Mike Roch	Director of Information Services	Heriot-Watt University
Nicola Siminon	Institutional Repository and Records Manager	Glasgow School of Art
Heather Thrift	Director, Library Services	Liverpool John Moores University
Jo Webb	Director of Library and Learning Services	De Montfort University
Sue White	Director of Computing and Library Services	University of Huddersfield
Katy Woolfenden	Head of Teaching, Learning and Students	The University of Manchester
Helen Workman	Director of Learning Resources	Oxford Brookes University

## Fringe

Thursday 26 June, 15.30

Speakers	Topic	Location
<b>Case study on discovery and delivery at the University of Birmingham</b>		
<p><b>Stephen Bull</b>, Library Subject Matter Advisor, University of Birmingham</p> <p><b>Christoph Frech</b>, Regional Sales Director, Ex Libris</p> <p><b>Alexandra Follett</b>, Key Account Manager, Ex Libris</p>	<p>This presentation will look at the University of Birmingham's implementation of Ex Libris' Primo unified resource discovery and delivery solution. Named 'FindIt@Bham' the service was based on a plan created after focus groups conducted with students and staff. This was followed by detailed research into user satisfaction with the service, which in turn led to further focus group activities. From this combination of projects the team at the University of Birmingham has formulated a road map for further developing the service.</p> <p>This session will give you an understanding of their approach to the project, the results of the survey and their thinking for the future direction of 'FindIt@Bham'.</p>	<p>Buchanan Room</p>
<b>The British Library document supply: our journey to an on demand service</b>		
<p><b>Alice Moore</b>, Performance and Business Analyst, The British Library</p> <p><b>Andy Appleyard</b>, Head of Document Supply and Customer Services, The British Library</p>	<p>The research landscape today is constantly shifting. Researchers' needs are evolving in tandem with technological advances, the availability of electronic content and changing publishing models. At The British Library, we have met these challenges head on, building on our unrivalled experience in the market, while responding to our customers' need for flexibility and convenience. Our revolutionised Document Supply Service is built for change and brings content delivery into the fast-moving digital age. We offer fast to instant delivery of high-quality content at a competitive price, while retaining our no-compromise approach to copyright compliance and keeping the customer in control with real-time information on price, availability and order status.</p> <p>This session will describe our journey in creating this new service and take you through some of our more recent improvements. It will also give an overview of the next steps in The British Library's journey towards a truly on demand service.</p>	<p>Hamilton Room</p>

Speakers	Topic	Location
<b>The importance of being partners</b>		
<p><b>Colin Carter,</b> Director, EMEA Library Engagement, Innovative Interfaces Inc.</p>	<p>Partnerships are playing an increasingly important role in the success of libraries. Whether these are partnerships between different libraries in the same sector, cross-sectoral partnerships, business to business partnerships, or some other model, partnerships are impacting on the way that libraries deliver their services in many ways. Colin Carter will discuss some examples of successful partnerships and why they are so significant in the future development and survival of libraries.</p>	<p>Great Western Room</p>
<b>SCONUL User Experience &amp; Success Strategy Group</b>		
<p><b>Jo Norry,</b> Chair, SCONUL User Experience and Success Strategy Group</p> <p><b>Liz Jolly</b> Chair, SCONUL</p>	<p>Update on the work of the SCONUL User Experience &amp; Success Strategy Group, with special focus on themes concerning employability, library space design, HEA Principal Fellowship and leadership development. See page 69 for more information on the work of the Group.</p>	<p>Clyde Room</p>
<b>Jisc Digital Resources: a new approach to the development and delivery of Jisc's content and resource discovery services</b>		
<p><b>Liam Earney,</b> Project Director, Shared Electronic Resource Management Support Service - Knowledge Base + (KB+), Jisc Collections</p>	<p>In response to the recommendations of the Wilson review, Jisc has brought together its different activities in the areas of content and resource discovery as one division, "Jisc Digital Resources", which includes staff and services from Jisc, Jisc Collections, EDINA, Mimas and Jisc Digital Media. Its purpose is to enable the widest and most unrestricted access to extensive collections of knowledge and information resources whilst providing services to aid the organisation of information and the interpretation of information needs. This session will explore the how we intend to fulfil this purpose and the principles that underpin this work, most importantly that Jisc's services must be designed with and for the communities we represent and that those communities play an essential part in their future delivery and governance.</p>	<p>Wellington Room</p>

## Fringe

Friday 27 June, 12.00

Speakers	Topic	Location
<b>Digital Futures: horizon scanning and sense-making, Jisc</b>		
<p><b>Rachel Bruce,</b> Director, Technology Innovation, Jisc</p> <p><b>Verena Weigert,</b> Senior Technology Manager, Jisc</p>	<p>In order for UK universities and colleges to stay on top, it is essential that they are aware of emerging trends and technologies, and how these developments will impact on academic institutions and their students, researchers and staff. This session will provide an opportunity to help inform and shape Jisc Futures' horizon scanning activity and the ways it makes sense of these challenges for the academic community.</p> <p>Horizon scanning and sense making is a new activity in Jisc and is part of the Digital Future Directorate, this activity is part of the response of new types of innovation activities in response to the review of Jisc.</p> <p>The purpose of the session is to get reaction and input from SCONUL members to help to shape plans in this area. The session will be a workshop.</p>	Clyde Room
<b>To tame a fox: getting the best from your supplier</b>		
<p><b>Andy Panayiotou,</b> Account Manager and Senior Product Specialist, SirsiDynix</p> <p><b>Barbara Pacut,</b> Vice President of Sales EMEA, SirsiDynix</p>	<p>Software suppliers like SirsiDynix can help libraries to realise their ambitions for automation of business processes and improved services to end users. Why will two libraries with the same system have very different experiences? Why sometimes do small libraries with fewer resources succeed while larger libraries struggle? How can we deliver our mission – to help communities thrive – putting into practice our core values of inclusiveness, integrity, and working hard while having fun?</p> <p>Barbara Pacut, Vice President of Sales EMEA and Andy Panayiotou, Account Manager for SirsiDynix invite SCONUL members to a short presentation and open discussion around the shifting relationship between the library and the LMS supplier. Our customers and non-customers alike are both equally welcome.</p>	The Wellington Room

Speakers	Topic	Location
<b>The M25 Consortium: developing librarians and libraries in London and the South-East</b>		
<b>Thomas Baldwin,</b> Executive Manager, M25 Consortium of Academic Libraries	The session will focus on the structure and strategy of the M25 Consortium of Academic Libraries. We also hope to hear the conference delegates' views and requirements of some our activities, such as: customer services, cpd25 training, e-books purchasing and Search25.	Hamilton Room
<b>RoMEO, JULIET, and FACT: using services and compliance with RCUK and HEFCE policies</b>		
<b>Bill Hubbard,</b> Project Manager SHERPA services	An interactive session on some of the Open Access SHERPA services run by the Centre for Research Communications at the University of Nottingham: how they work, what information they can provide and how they can help in the response and infrastructure that libraries are being asked to support, for compliance with funders' and future REF policies.	Buchanan Room
<b>Your SCONUL Shared &amp; Collaborative Services Strategy Group</b>		
<b>Mark Toole,</b> Chair, SCONUL Shared & Collaborative Services Strategy Group	An opportunity to find out more about the Group's activities in the past year and help shape the priorities and activities for 2014-15. For more information on the work of the Group, please see page 68.	Great Western Room





## SCONUL at a glance

SCONUL is **176** member institutions, including **4** national libraries, **140** universities, **32** colleges or collections of national interest.

There are **13** members of the Executive Board.

**4** Strategy Groups are responsible for delivering the SCONUL strategy.

The work of SCONUL is supported by **5** members of staff, **4** full-time and **1** part time.

SCONUL members represent and promote the views of academic libraries on **24** external bodies or committees.

**36,045** researchers and student registered to use the SCONUL Access scheme in 2013.

For **27** years SCONUL has collected measurable aspects of the work of academic libraries.

In 2013-14, we've worked with Jisc to inform the strategies and deliver outcomes on **4** committees and **5** co-design projects

SCONUL responded to **5** consultations in 2013-14 from governmental bodies.

## Academic Content & Communications Strategy Group

In reviewing our priorities, ACCSG has identified four key areas on which to focus:

### Copyright

A Copyright sub-group, chaired by Simon Baines, has been established and will ensure that the interests of SCONUL members are represented at appropriate fora and that we are able to input to national and international consultations as appropriate. The Group has produced the first in a series of Executive Briefings, which aim to provide SCONUL members with timely information on UK, EU and global copyright, licensing and IPR matters as they relate to HE. They have also conducted a short survey to assist in developing an appropriate training event for copyright managers.

### Open Access

ACCSG commissioned a briefing on open access which looked at recent developments, funder requirements and case studies and which was circulated to members in September 2013. This is available on the SCONUL website at: [http://www.sconul.ac.uk/sites/default/files/documents/Open\\_Access\\_summary.pdf](http://www.sconul.ac.uk/sites/default/files/documents/Open_Access_summary.pdf). The Group also submitted a response on behalf of SCONUL to the HEFCE consultation on OA post REF 2014. We are working with Jisc on the OA Good Practice Pathfinder projects and Kitty Inglis has been appointed to the UUK Open Access Co-ordination Group, established to oversee the implementation of the recommendations of the Finch Report. She also represents the SCONUL community on the Jisc Open Access Implementation Group.

### Monographs and e-textbooks

Work is underway to develop a strong and clear statement of the requirements of HE libraries in relation to e-books, drawing on

previous recent work in this area and linking to the work Jisc is doing around a National Monograph Strategy, with a view to influencing the development of the e-book market and improving standards and workflows.

### Research data management

We are working with appropriate partners to deliver an "RDM Best Practice" event for librarians, which we aim to run in autumn 2014. We are also working on producing a briefing for members on the role of academic libraries in RDM.

Finally, we have put together a panel of experts from a wide range of backgrounds, including publishers, funders, senior academics and practitioners with whom we can consult and share ideas in order to better deliver our objectives. The panel will meet in the autumn to discuss community requirements and priorities.

### ACCSG members

- Kitty Inglis (Chair), University of Sussex
- Simon Bains, University of Manchester (and Chair of the Copyright sub-group)
- Nuala Devlin, Sheffield Hallam University
- Dave Parkes, Staffordshire University
- Clare Powne, University of Exeter
- Kate Price, King's College London
- Ann Rossiter, SCONUL
- Ian Rowlands, University of Leicester
- Caroline Taylor, University of Leicester
- Richard Wake, University of Southampton
- Nicky Whitsed, Open University.

## Performance & Quality Strategy Group

Our priorities have been informed by feedback from members, developments in UK HE and initiatives identified in collaboration with partners.

### Review of the SCONUL statistics

The review focussed on the following *... that the return should be radically reduced in size and based on the indicators used in the Strategic Planning Set. It was felt that this had succeeded in producing a useable set of core data and that the addition of only a small number of additional indicators would deliver a return which would still be meaningful whilst being more easily measured and managed across the sector.*

An extensive consultation of SCONUL members was carried out, supported by the Statistics sub-group with advice from LISU. The consultation comprised a survey, series of regional workshops and a focus group with a broad cross-section of the SCONUL community. A proposal will be submitted to a vote at the AGM on June 27th. All Group members have been involved in this extensive piece of work, but most significantly Paul Reynolds, Chair of the Statistics sub-group.

### Impact and value study

The importance of demonstrating value and impact has resulted in us funding a study to highlight trends and good practice, including library data and its use in demonstrating impact. The findings will assist with external reporting, lobbying and advocacy by members. The work is being undertaken by Evidence Base at Birmingham City University and is due for completion by December 2014.

### Sharing practice on use of Key Performance Indicators (KPIs)

Recognising the increasing need to visibly demonstrate the quality of our services, a workshop was run at the 10th Northumbria Performance Measurement Conference 2013. The level of interest in the topic was such that the workshop has been run again for Northern Collaboration staff. Workshops are also planned for members of the M25 Consortium and potentially for consortia in Wales, Scotland and Ireland. As knowledge and practice grows, the SCONUL website will be used to host examples and case studies.

### Analytics and Benchmarking

In collaboration with Jisc, the group held a workshop on the use of library data. This work is embryonic but its value to the community is potentially significant. We will be working closely with Jisc to prioritise areas for further work. We are also involved in the UUK working group Efficiency through Benchmarking; we are in consultation with the QAA on a review of the subject benchmarking for Library and Information Studies and continue to explore new opportunities for liaison with partner organisations.

#### P&QSG members

- Alison Mackenzie (Chair), Edge Hill University
- Leo Appleton, Liverpool John Moores University
- Lori Bailey, SCONUL
- Julie Berry, University of Salford (and Chair of the Quality sub-group)
- Simon Bevan, Cranfield University
- Grace Hudson (Secretary), University of Bradford
- Paul Reynolds, Keele University (and Chair of the Statistics sub-group)
- Kate Robinson, University of Bath

## Shared & Collaborative Services Strategy Group

The Group leads on SCONUL's relationship with Jisc and in setting priorities for shared service development on behalf of the community.

### KB+ and co-design

The Group continues to work on the development of the KB+ service, including acting as the steering group for two projects funded under the Jisc Co-Design programme investigating the extension of the service to cover e-books and post cancellation access. The final reports and recommendations are being considered by Jisc Collections to inform the development plan for KB+, with wider recommendations on e-books being taken forward by SCONUL and Jisc.

### LMS

The Group has worked closely with Jisc on the outcomes of the Library Management Systems Change programme, <http://lmsguidance.jiscinvolve.org/wp/> and is currently discussing priorities for the next phases of development and advisory work in this area.

### Development of new shared services

The Group monitors Jisc projects and programmes for opportunities of new shared services developments; in the past year research data management and the National Monograph Strategy have been of most interest. In line with SCONUL's Shared Services Development Plan 2013-18, [www.sconul.ac.uk/sites/default/files/SCONUL%20Shared%20Services%20Forward%20Plan%202013-18.pdf](http://www.sconul.ac.uk/sites/default/files/SCONUL%20Shared%20Services%20Forward%20Plan%202013-18.pdf), the list of candidates of shared services for taking forward for development was revised during the spring. Members will have the opportunity to inform this revision directly at a SCONUL Fringe session on Friday at 12.00.

### Shared services resources

A resources list bringing together outputs, reports and news on a number of library shared services projects and experiences, including copies of the project reports on e-books and post cancellation access, has been developed and is regularly updated. It can be found on the SCONUL website at <http://www.sconul.ac.uk/page/library-and-general-shared-services-resource-links>.

### Partnership working

As partnership is at the heart of SCONUL's approach to shared services development, the Group is pleased to report that representatives of M25, Jisc and UCISA have regularly attended meetings and representatives of WHELF and RLUK have joined during the year. Discussions were held with LIBER to explore potential collaboration on shared services development.

### SCSSG Members

- Mark Toole (Chair), Nottingham Trent University
- Debbi Boden-Angell, York St John University
- Suzanne Enright, University of Westminster
- Mark Hughes, Swansea University
- Fiona Parsons, University of Wolverhampton
- Ann Rossiter, SCONUL
- Gurdish Sandhu, University of East London
- John Tuck, Royal Holloway University of London
- Sue White, University of Huddersfield
- Rachel Bruce (for Jisc)
- Liam Earney (for Jisc Collections)
- Ben Showers (for Jisc)
- David Kay, Sero Consulting (Observer)

## User Experience & Success Strategy Group

Our focus is on the strategic challenges and opportunities around the experience of our users (students, staff, researchers, partners, etc.) and our services' contribution to their success and achievement.

### Library design and space planning

The major activity over the last year has been the Library Design Awards, including the Design Awards and Showcase in February 2014 at the Library of Birmingham. This fulfilled our objective of greater visibility and the opportunity for media interest for the award, for the winners and the significance of academic library design in contemporary HE. The competition attracted 17 entries, and Augustine House Library and Student Services Centre at Canterbury Christ Church University and The McClay Library, Queen's University Belfast, were the joint winners, with the Library at University of the West of Scotland / Scotland's Rural College winning in the smaller buildings category. We are investigating future themes, events and potential partnerships with other organisations active in this field, such as LIBER, and the Designing Libraries website. The Design Awards will run next in 2016.

### Employability

On employability, the Group has commissioned a literature review on the contribution of libraries to developing students' employability skills and graduate attributes, as this becomes a key driver in many HEIs, and a new vehicle for information skills and digital literacy. The review will be available shortly, and will form the basis of development of a "toolkit" of case studies and good practice for situating our information literacy role in the developing broader academic skills landscape. We continue to engage with sector information skills work, such as the Research Information and Digital Literacies Coalition (RIDLs) and the outputs of the Jisc Digital Literacies Project.

### Staff learning and development

We are working with the Higher Education Academy to arrange a workshop and set of resources to support SCONUL members who are applying for HEA Senior or Principal Fellowships. The HEA is keen to engage with us as key figures in the support of learning and teaching. The workshop is planned for early autumn 2014. The Group has also contributed to discussions on the future direction of the Future Leaders Programme, run by the Leadership Foundation.

### Developing partnerships

We have initiated liaison with a new player in the higher education field, the NUS Student Engagement Unit. This is a partnership between the NUS, HEFCE, Association of Colleges and GuildHE. We have discussed the potential for joint working and an event with the Director, Liam Jarnecki, who is speaking at SCONUL Conference. Finally, we are contributing to Jisc activities, in the shape of the Jisc Co-Design Digital Student Advisory Group, where Liz Waller represents SCONUL.

#### UESSG members

- Liz Jolly (Chair), Teesside University
- Lori Bailey, SCONUL
- Jacqueline Chelin, University of the West of England, Bristol
- Roisin Gwyer, University of Portsmouth
- Jo Norry, Leeds Metropolitan University
- Pete Ryan, Canterbury Christ Church University
- Elizabeth Selby, Southampton Solent University
- Liz Waller, University of York
- Catherine Walsh, University of East London
- Steve Williams, Swansea University

## Glasgow Fact File

For SCONUL members who are planning to stay in Glasgow for the weekend, or spend some time around the city while not at the conference, the following information may be helpful.

Glasgow is Scotland's largest city and is renowned for its culture and style. Glasgow was also the UK's City of Architecture and Design in 1999 and its architecture is an attraction in itself.

For more information about attractions, restaurants and shopping, you can visit <http://peoplemakeglasgow.com/> or <http://conferenceuk.peoplemakeglasgow.com>. You can also download the Glasgow city guide app, with maps, guidebook for events, restaurants and special offers – to download the app see <http://peoplemakeglasgow.com/maps-apps/>.

### Attractions in Glasgow

#### Jazz Festival

There is a Jazz Festival taking place in Glasgow from 25–29 June which may be of interest to those staying on in Glasgow for the weekend following the conference. Full programme details can be found at: [www.jazzfest.co.uk/?utm\\_campaign=GRCH%3A+Glasgow+Jazz+Festival+2014&utm\\_source=emailCampaign&utm\\_medium=email&utm\\_content](http://www.jazzfest.co.uk/?utm_campaign=GRCH%3A+Glasgow+Jazz+Festival+2014&utm_source=emailCampaign&utm_medium=email&utm_content).

#### Charles Rennie Mackintosh

Mackintosh, the Glasgow born architect, designer and artist, is celebrated around the world as one of the most creative figures of the early 20th century. A pioneer of Art Nouveau, he has left a legacy of his work throughout the city. More about his architectural heritage in Glasgow:

<http://peoplemakeglasgow.com/guide-book/tourist-info/mackintosh/>

#### The Hunterian Museum, University of Glasgow

Founded in 1807, The Hunterian is Scotland's oldest public museum and home to one of the largest collections outside the National Museums. Its collections have been recognised as a Collection of National Significance. It is one of Scotland's most important cultural assets.

[www.gla.ac.uk/hunterian/](http://www.gla.ac.uk/hunterian/)

#### Gallery of Modern Art

Situated in the heart of the City Centre, GoMA is Scotland's most visited modern art gallery displaying work that highlights the interests, influences and working methods of artists from around the world.

[www.glasgowlife.org.uk/museums/GoMA/Pages/default.aspx](http://www.glasgowlife.org.uk/museums/GoMA/Pages/default.aspx)

#### Kelvingrove Art Gallery and Museum

Kelvingrove Art Gallery and Museum houses one of Europe's great art collections. It is amongst the top three free-to-enter visitor attractions in Scotland and one of the most visited museums in the UK outside of London.

[www.glasgowlife.org.uk/museums/kelvingrove](http://www.glasgowlife.org.uk/museums/kelvingrove)

#### Scotland Street School Museum

Scotland Street School is a must-see for fans of Charles Rennie Mackintosh and tells the story of education in Scotland from the late 19th century to the late 20th century.

[www.glasgowlife.org.uk/museums/scotland-street/Pages/default.aspx](http://www.glasgowlife.org.uk/museums/scotland-street/Pages/default.aspx)

## Glasgow Science Centre

There are many elements that make Glasgow Science Centre unique. The Centre is home to hundreds of interactive exhibits throughout the three engaging floors of the Science Mall. Glasgow Tower is a revolutionary structure and a world first. Standing at 127 metres tall, it is the only fully rotating building in the world. [www.glasgowsciencecentre.org/whats-here-at-gsc.html](http://www.glasgowsciencecentre.org/whats-here-at-gsc.html)

## Glasgow Botanic Gardens

Glasgow Botanic Garden, situated in the West End of the city, lies beside the River Kelvin. At any time of the year there are pleasant riverside walks, peaceful woodland copses and exotic tropical places to explore. Entry to the gardens is free. [www.glasgowbotanicgardens.com/](http://www.glasgowbotanicgardens.com/)

## Glasgow Cathedral

The first stone built Glasgow Cathedral was dedicated in the presence of King David I in 1136. The present building was consecrated in 1197. Since that same period the Cathedral has never been unroofed and the worship of God has been carried out within its walls for more than 800 years. The splendid achievements of the architects and builders of those far off days can be studied and admired. Not everything, however, is old and the Cathedral has one of the finest post-war collections of stained glass windows to be found in Britain. Admission to the Cathedral is free. [www.glasgowcathedral.org/](http://www.glasgowcathedral.org/)

## City Chambers

In the very heart of Glasgow stands one of the city's most important and prestigious buildings - the City Chambers. A grand and imposing edifice overlooking George Square, the City Chambers is an impressive symbol of Glasgow's political strength and historical

wealth. Completed in 1888, the City Chambers has for over a hundred years been the headquarters of successive councils serving the City of Glasgow. [www.glasgow.gov.uk](http://www.glasgow.gov.uk)

## The Govan Stones

This is a unique collection of early medieval stones carved in the 9th-11th centuries to commemorate the power of those who ruled the Kingdom of Strathclyde. One of Glasgow's most important historical and cultural assets, it holds 31 monuments within the beautiful setting of Govan Old Church. Entry is free. [www.thegovanstones.org.uk](http://www.thegovanstones.org.uk)

## The Lighthouse

The Lighthouse, Scotland's Centre for Design and Architecture, is a visitor centre, exhibition space and events venue situated in the heart of Glasgow, just off the Style Mile. The Lighthouse acts as a beacon for the creative industries in Scotland and promotes design and architecture through a vibrant programme of exhibitions and events. Formerly housing The Glasgow Herald, The Lighthouse was the first public commission completed by Charles Rennie Mackintosh, and is the perfect place to begin a Mackintosh tour of Glasgow. [www.thelighthouse.co.uk](http://www.thelighthouse.co.uk)

## Open Top Bus

A company called City Sightseeing offers an open top double decker bus tours of Glasgow. There are discounts for delegates. <http://citysightseeingglasgow.co.uk>

## Tourist Information Centre

Visit Scotland's Information Centre in Glasgow is situated at 170 Buchanan Street, Glasgow, G1 2LW. For other attractions, visit: [www.glasgowleadingattractions.com/](http://www.glasgowleadingattractions.com/)



## Local Knowledge

### Getting around

**Glasgow Airport** is located just 8 miles from the heart of the city. The best way to travel to and from the airport is by taxi.

[www.glasgowairport.com/](http://www.glasgowairport.com/)

### Glasgow Taxis

On arrival at the airport you can call and book a taxi with Glasgow Taxis on +44 (0) 141 429 7070. Quote CM7F for delegate rate:

[www.glasgowtaxis.co.uk/price-promise-menu.html](http://www.glasgowtaxis.co.uk/price-promise-menu.html)

### Telephone

The UK country code is 44, while Glasgow landlines start with a 141 area code, followed by a 7 digit number. To call abroad, dial 00 before the country code. In an emergency call 999.

### Shopping

The central shopping area is the Style Mile, a square mile in the very centre of the city, which houses over 200 stores, many exclusive to the Style Mile. <http://glasgowstylemile.com/>

### Pharmacy

There is a late night pharmacy open Monday to Saturday until midnight (Boots Glasgow Central Station Pharmacy) inside the Central Station Glasgow. Telephone +44 (0) 141 221 7107.

### Wifi Hot Spots

Most of the cafes and restaurants have free wifi hotspots for clients.

### Restaurants and Cafes

During the summer months, visitors can enjoy alfresco dining in the city centre's Royal Exchange Square or Buchanan Street or on the cobbled streets of the West End and Merchant City. <http://glasgowdinearound.com/>

### Bars and Clubs

There are many bars, clubs and pubs in Glasgow. One of the main nightlife areas is in the vicinity of the Grand Central Hotel, around Argyle Street.

## Our sponsors

### Authors' Licensing and Collecting Society Ltd (ALCS)

The Authors' Licensing and Collecting Society (ALCS) is a membership organisation run by writers for writers with over 85,000 members. Since its inception more than 30 years ago, a total of £300 million has been paid out to our members. The majority of ALCS income comes from photocopying, scanning and digital copying paid to us by our sister organisation the Copyright Licensing Agency (CLA). This money is generated by licence fees bought by schools, colleges, universities and businesses. Other revenues include overseas Public Lending Right (PLR) and retransmission fees from TV and radio from other countries.

**Find us in the exhibition hall.**

### Capita

Capita is the market-leading library management software provider in the UK. Our software solutions, developed through close customer partnerships, are designed to promote and support effective library services through configurable and innovative applications. Capita's core library management system (LMS) software enables libraries to effectively and efficiently manage the running of the library.

**Find us in the exhibition hall.**

### Cengage Learning EMEA Ltd

Cengage Learning is a leading educational content, software and services company, empowering educators and driving learner engagement through personalized services and course-driven digital solutions. The company's products and services are designed to foster academic excellence and professional development, increase student engagement, improve learning outcomes and deliver authoritative information to people whenever and wherever they need it.

**Find us in the exhibition hall.**

protecting  
and promoting  
authors' rights

## ALCS

[www.alcs.co.uk](http://www.alcs.co.uk)

13 Haydon Street  
London EC3N 1DB

E-mail: [alcs@alcs.co.uk](mailto:alcs@alcs.co.uk)  
Twitter: [twitter.com/alcs\\_uk](https://twitter.com/alcs_uk)  
T: + 44 (0) 20 7264 5700  
F: + 44 (0) 20 7264 5755

## CAPITA

[www.capita.co.uk/libraries](http://www.capita.co.uk/libraries)

E-mail. Libraries-  
[enquiries@capita.co.uk](mailto:enquiries@capita.co.uk)  
T: +44 (0) 870 400 5090  
F: +44 (0) 870 400 5001

The logo for GALE CENGAGE Learning, featuring a stylized blue and red starburst icon to the left of the text "GALE CENGAGE Learning".

[www.cengage.co.uk](http://www.cengage.co.uk)

Cengage Learning EMEA Ltd  
Cheriton House  
North Way  
Andover SP10 5BE

Email:  
[emea.marketing@cengage.com](mailto:emea.marketing@cengage.com)  
T: +44 (0) 1264 332424

## Ex Libris

Ex Libris is a leading provider of automation solutions for academic, national, and research libraries. Offering the only comprehensive product suite for electronic, digital, and print materials, Ex Libris provides efficient, user-friendly products that serve the needs of libraries today and will facilitate their transition into the future. Ex Libris maintains an impressive customer base consisting of thousands of sites in more than 80 countries on six continents.

Dedicated to developing creative solutions in close collaboration with customers, Ex Libris enables libraries to maximize productivity and efficiency and, at the same time, greatly enhance the user experience.

**See us at our fringe meeting.**



[www.exlibrisgroup.com](http://www.exlibrisgroup.com)

7 Ridgmount Street  
London WC1E 7AE

E-mail:  
[infouk@exlibrisgroup.com](mailto:infouk@exlibrisgroup.com)  
T: +44 (0)207 313 4428

## Ingram Content Group

Ingram Content Group is the world's largest and most trusted distributor of physical and digital content.

We got our start in 1964 as a textbook depository and have since grown and transformed into a comprehensive publishing industry services company that offers numerous solutions, including physical book distribution, print-on-demand and digital services.

We are committed to the success of our partners and work closely with publishers, retailers, libraries and schools around the world to provide the right products and services to help them succeed in the dynamic and increasingly complex world of content publishing.



[www.ingramcontent.com](http://www.ingramcontent.com)

Carlos Gimeno  
International Sales Director  
Coutts Information Services  
Limited Headlands Business Park  
Ringwood  
Hampshire BH24 3PB

E-mail:  
[carlos.gimeno@ingramcontent.com](mailto:carlos.gimeno@ingramcontent.com)  
T: + 44 (0) 1425 485860  
M: +44 (0) 7740 630330

### Innovative Interfaces Inc.

Innovative creates cutting edge solutions for libraries around the world, including more than 40 higher education institutions in the UK and Ireland. Innovative's products include the Sierra Library Services Platform (now adopted by more than 500 libraries worldwide), Encore Duet discovery platform and Decision Centre analytics solution. These products assist libraries in the transformation that they need to undertake to meet the continually changing needs and expectations of their users. Innovative continues to invest in providing excellent service and support and now has 30 staff based in its Dublin, Ireland offices supporting customers in the UK, Ireland and the rest of Europe.

**Find us in the exhibition hall and see us at our fringe meeting.**

### OCLC. The world's libraries. Connected.

Founded in 1967, OCLC is a non-profit, membership, computer library service and research organisation dedicated to the public purposes of furthering access to the world's information and reducing library costs. More than 72,000 libraries in 170 countries have used OCLC services to locate, acquire, catalogue, lend, preserve and manage library materials. Researchers, students, faculty, scholars, professional librarians and other information seekers use OCLC services to obtain bibliographic, abstract and full-text information when and where they need it. OCLC and its member libraries cooperatively produce and maintain WorldCat, the world's largest online database for discovery of library resources. Search WorldCat at [www.worldcat.org](http://www.worldcat.org).

**Find us in the exhibition hall.**



[www.iii.com](http://www.iii.com)

Colin Carter  
Director Library Engagement

E-mail: [ccarter@iii.com](mailto:ccarter@iii.com)  
T: +44 (0) 7887 714867



[www.oclc.org](http://www.oclc.org)

City Gate  
8 St. Mary's Gate  
Sheffield S1 4LW

E-mail: [uk@oclc.org](mailto:uk@oclc.org)  
T: +44 (0) 114 2677500

## ProQuest

ProQuest connects people with vetted, reliable information. Key to serious research, the company's products are a gateway to the world's knowledge including dissertations, governmental and cultural archives, news, historical collections and e-books. ProQuest technologies serve users across the critical points in research, helping them discover, access, share, create and manage information. The company's cloud-based technologies offer flexible solutions for librarians, students and researchers through the ProQuest®, Bowker®, Dialog®, ebrary®, EBL® and Serials Solutions® businesses – and notable research tools such as the Summon® discovery service, the ProQuest Flow™ collaboration platform, the Pivot™ research development tool and the Intota™ library services platform.



[www.proquest.com](http://www.proquest.com)

Phill Hall  
Senior Sales Specialist

E-mail: [phill.hall@proquest.com](mailto:phill.hall@proquest.com)

## Reassurance Security Services Ltd

Reassurance Security Services Ltd is a medium sized enterprise which has over 6 years' experience of working in the University sector. During this time, we saw that there was a gap in the market to provide experienced customer focused staff, who delivers more than just security cover. We now specialise in this sector and have created a niche market of providing an enhanced out of hours service for university libraries.

We can provide flexible, efficient, cost effective and often bespoke services including weekend/late hours providing additional back up to library staff; access control; library patrols; lock down; 24/7 cover during exam revision periods; flexible cover required –7 hours + – only pay for the hours you need to cover; customer service – book collection, book shelving, photocopier, self-service machine maintenance, general student assistance. We also provide staff to integrate with in-house library staff to provide reliable back up on a long term basis helping to cover vacation and sickness cover.

**Find us in the exhibition hall.**



[www.reassurancesecurityservices.co.uk](http://www.reassurancesecurityservices.co.uk)

Kathryn McGowan  
Contract Director

E-mail: [kathryn@reassurancesecurityservices.co.uk](mailto:kathryn@reassurancesecurityservices.co.uk)  
T: + 44 (0) 845 372 1995

## SirsiDynix

SirsiDynix is the global leader in strategic technology solutions for libraries. Our evolutionary approach to software development and emphasis on customer care empowers SirsiDynix libraries to play a central role in their institutions. With more than thirty SCONUL member institutions using our library management and discovery systems, SirsiDynix is proud to serve the UK and Irish academic library community, supporting excellent student support and academic research. Barbara Pacut and Andy Panayiotou are looking forward to seeing you in Glasgow and we hope you will come along to see us at this year's SCONUL Fringe.

**See us at our fringe meeting.**

## Swets

Swets is a global market leader in managing research information. Swets' vision is "to improve the delivery and use of knowledge". From more than twenty offices around the world we actively serve customers (users of information) and publishers in over 160 countries. Our active role in today's complex information marketplace has been regularly awarded by E-Content Magazine in their annual "100 Companies that Matter Most in the Digital Content Industry." We are the only information agent to be ISO 9001:2008 certified on a global basis, a standard which affirms our focus on customer service and continuous improvement.

**Find us in the exhibition hall.**



[www.sirsidynix.com](http://www.sirsidynix.com)

E-mail: [sales-uk@sirsidynix.com](mailto:sales-uk@sirsidynix.com)

T: +44 (0) 1923 202901

**SWETS**

[www.swets.com](http://www.swets.com)

Swan House  
Wyndyke Furlong  
Abingdon Business Park  
Abingdon, Oxon, OX14 1UQ

Email: [mail@swets-info.com](mailto:mail@swets-info.com)

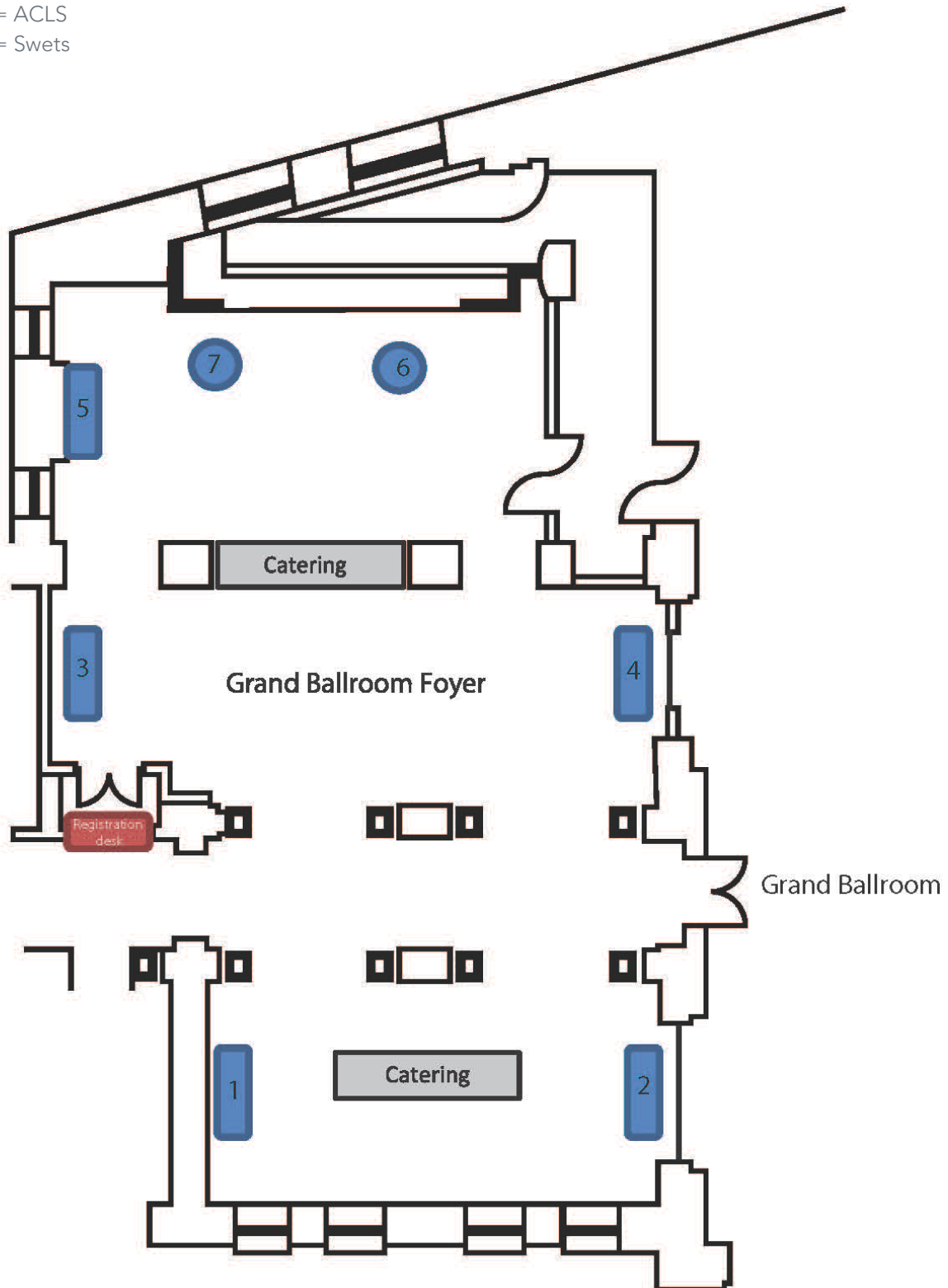
Twitter: @SwetsUK

T: +44 (0) 1235 857 500

F: +44 (0) 1235 857 503

## Exhibitor layout

- 1 = Capita
- 2 = Reassurance Security Services
- 3 = OCLC
- 4 = Innovative Interfaces Inc.
- 5 = Cengage
- 6 = ACLS
- 7 = Swets



## Evaluation Survey

We would be very grateful if you would take the time to complete this evaluation form, either by completing it on paper and returning it to the SCONUL office or by completing it online at: <https://www.surveymonkey.com/s/SCONULCONF14>.

Please answer two questions on each of the main session speakers:

1. **The Borderless Library: From Optional Choice to State of Being: Progress in Collaborative Collections**

Laine Farley Executive Director of the California Digital Library

The content was relevant and useful      Yes       No

The speaker was engaging      Yes       No

Any comments:

2. **The Borderless Library: Dutch Libraries Crossing Borders: Collections in a Global Infrastructure**

Anja Smit, University Librarian at Utrecht University

The content was relevant and useful      Yes       No

The speaker was engaging      Yes       No

Any comments:

3. **Keynote speech: Open Access, Open Data and Open Scholarship – the role of libraries in an open world**

Mark Thorley, Chair, RCUK Research Outputs Network

The content was relevant and useful      Yes       No

The speaker was engaging      Yes       No

Any comments:



**4. Panel discussion: Sharing in online research communities**

- Ben Lund, Chief Technology Officer, Academia.edu
- Martin Eve, Lecturer in English Literature, University of Lincoln
- Chris Banks, Director of Library Services, Imperial College London
- Andy Miah, Professor of Ethics and Emerging Technologies and Director of the Creative Futures Institute at the University of the West of Scotland

The content was relevant and useful      Yes       No

The speakers were engaging      Yes       No

Any comments:

**5. Keynote speech: Gibson was right: the future is already here**

**Dr Larry Johnson, Chief Executive Officer, New Media Consortium**

The content was relevant and useful      Yes       No

The speaker was engaging      Yes       No

Any comments:

**6. Making e-books fit for students: University Presses – the Library as publisher**

**Dr Paul Ayriss, Director and Acting Group Manager, Planning and Resources and Academic Support Group, Library Services, University College London**

The content was relevant and useful      Yes       No

The speaker was engaging      Yes       No

Any comments:

**7. Making e-books fit for students: Partnership and Engagement**

**Liam Jarnecki, Head of Student Engagement Unit, NUS**

The content was relevant and useful      Yes       No

The speaker was engaging      Yes       No

Any comments:

**8. Making e-books fit for students: A new acquisition model: personal e-books for students**  
**Matthew Lawson, Assistant Director, Library and Learner Development, Library and Student Support, Middlesex University**

The content was relevant and useful      Yes       No

The speaker was engaging      Yes       No

Any comments:

**How satisfied were you with the open access parallel sessions?**

	Lorraine Estelle, Subscriptions and APCs	Valerie McCutcheon, Developing closer relationships with research offices	Dr Stuart Fancy, Open access and the REF	Caroline Wilkinson, The future of open access and the role of the library	Rachel Bruce, Libraries and open research data – whose role is it anyway?
Very satisfied	<input type="checkbox"/>	<input type="checkbox"/>	<input type="checkbox"/>	<input type="checkbox"/>	<input type="checkbox"/>
Satisfied	<input type="checkbox"/>	<input type="checkbox"/>	<input type="checkbox"/>	<input type="checkbox"/>	<input type="checkbox"/>
Neither satisfied nor dissatisfied	<input type="checkbox"/>	<input type="checkbox"/>	<input type="checkbox"/>	<input type="checkbox"/>	<input type="checkbox"/>
Dissatisfied	<input type="checkbox"/>	<input type="checkbox"/>	<input type="checkbox"/>	<input type="checkbox"/>	<input type="checkbox"/>
Very dissatisfied	<input type="checkbox"/>	<input type="checkbox"/>	<input type="checkbox"/>	<input type="checkbox"/>	<input type="checkbox"/>

Any comments:

9. How satisfied were you with the Intelligent Library parallel sessions?

	Pete Dalton & Jo Alcock, Value and impact of academic libraries	Joy Palmer, Using analytics to inform library practice	Peter Shepherd, New usage-based measures of impact in the context of altmetrics	Alison Allden, Using BI data and information for insights, performance and planning	Dr Rebecca Ferguson, The role and impact of learning analytics in universities
Very satisfied	<input type="checkbox"/>	<input type="checkbox"/>	<input type="checkbox"/>	<input type="checkbox"/>	<input type="checkbox"/>
Satisfied	<input type="checkbox"/>	<input type="checkbox"/>	<input type="checkbox"/>	<input type="checkbox"/>	<input type="checkbox"/>
Neither satisfied nor dissatisfied	<input type="checkbox"/>	<input type="checkbox"/>	<input type="checkbox"/>	<input type="checkbox"/>	<input type="checkbox"/>
Dissatisfied	<input type="checkbox"/>	<input type="checkbox"/>	<input type="checkbox"/>	<input type="checkbox"/>	<input type="checkbox"/>
Very dissatisfied	<input type="checkbox"/>	<input type="checkbox"/>	<input type="checkbox"/>	<input type="checkbox"/>	<input type="checkbox"/>

Any comments:

10. Which of the following SCONUL fringe events did you attend, and did you find it worthwhile?

	Attended?	Found worthwhile?
Ex Libris - Case study on discovery and delivery at the University of Birmingham	<input type="checkbox"/>	<input type="checkbox"/>
The British Library document supply: our journey to an on demand service	<input type="checkbox"/>	<input type="checkbox"/>
Innovative Interfaces Inc. -The importance of being partners	<input type="checkbox"/>	<input type="checkbox"/>
SCONUL User Experience & Success Strategy Group	<input type="checkbox"/>	<input type="checkbox"/>
Jisc Digital Resources: a new approach to the development and delivery of Jisc's content and resource discovery services	<input type="checkbox"/>	<input type="checkbox"/>
Jisc - Digital Futures: horizon scanning and sense-making	<input type="checkbox"/>	<input type="checkbox"/>

	Attended?	Found worthwhile?
The M25 Consortium: developing librarians and libraries in London and the South-East	<input type="checkbox"/>	<input type="checkbox"/>
SirsiDynix - To tame a fox: getting the best from your supplier	<input type="checkbox"/>	<input type="checkbox"/>
SHERPA - RoMEO, JULIET, and FACT: using services and compliance with RCUK and HEFCE policies	<input type="checkbox"/>	<input type="checkbox"/>
Your SCONUL Shared & Collaborative Services Strategy Group	<input type="checkbox"/>	<input type="checkbox"/>

Any comments:

**11. Overall, were you satisfied with the organisation of the event?**

Yes  No

Any comments:

**12. Overall, were you satisfied with the venue facilities?**

Yes  No

Any comments:

**13. Did the SCONUL conference allow you to**

	Yes	No
extend your network of professional contacts?	<input type="checkbox"/>	<input type="checkbox"/>
deepen your understanding of the issues facing academic libraries?	<input type="checkbox"/>	<input type="checkbox"/>
explore a theme of particular interest to you?	<input type="checkbox"/>	<input type="checkbox"/>

14. Do you feel the conference represented good value for money?

Please rate on a scale of 1-5 with 5 being Very Good and 1 being Very Poor

5

4

3

2

1

15. Which two sessions did you find most useful?

The Borderless Library: new approaches to collaborative collection development, Laine Farley and Anja Smit

Keynote speech: Open Access, Open Data and Open Scholarship – the role of libraries in an open world, Mark Thorley

Panel discussion: Sharing in online research communities, Ben Lund, Dr Martin Eve, Chris Banks and Andy Miah

Keynote speech: Gibson was right: the future is already here, Dr Larry Johnson

Making e-books fit for students: three challenges, Paul Ayris, Liam Jarnecki, Matthew Lawson

SCONUL Fringe event Thursday 26 June

SCONUL Fringe event Friday 27 June

Parallel session: Open Access

Parallel session: Intelligent Library

16. Overall, were you satisfied with the conference content?

Yes  No

17. Do you have any suggestions for topics future SCONUL conferences should cover?

18. Do you have any other comments?

SCONUL would like to thank the following sponsors for their support

