

# Library support for the lifecycle of research publications



**Paul Johnson**  
Associate Director (Collections,  
Research and Space)  
Library  
University of Reading  
[p.b.johnson@reading.ac.uk](mailto:p.b.johnson@reading.ac.uk)



**Karen Rowlett**  
Research Publications Adviser  
Library  
University of Reading  
[k.a.rowlett@reading.ac.uk](mailto:k.a.rowlett@reading.ac.uk)



**Alison Sutton**  
Institutional Repository Manager  
Library  
University of Reading  
[a.m.sutton@reading.ac.uk](mailto:a.m.sutton@reading.ac.uk)

The copyright in items published in *SCONUL Focus* remains the property of the author(s) or their employers as the case may be.



## The University of Reading research review

The University of Reading is a research-intensive university and, following the last research excellence framework exercise (REF), a review of all its research activities was carried out in order to form a strategic plan looking ahead to 2020. This review presented an opportunity for the library to strengthen its support for research, particularly in areas relating to research publications, including open access, bibliometrics and the role of the university's institutional repository, CentAUR. Both Alison and Paul were involved in various working groups, and one area in which the university was particularly keen to improve was citations for research outputs. Alison sat on the enhancing research publications and dissemination task group and Paul sat on the research support implementation group. Through a combination of these groups we successfully outlined the need for additional resources in order to boost the enhancement and dissemination of research publications, which formed a part of the wider university research 2020 plan. It was concluded that improved access to research performance data, bibliographic evaluation and analysis tools, and additional staff, were needed in order to address the lack of a formal mechanism for monitoring the quality and quantity of the university's research output.

The methodology to be employed for high-level monitoring of research outputs would take the form of a research monitoring mechanism that would use individual researchers' publications lists extracted from CentAUR. In terms of bibliographic evaluation and analysis, it was important to create a new role that would encompass responsibility for this area. Although initially the focus of the post was on bibliometrics alone, we subsequently decided to broaden the profile of the role to incorporate open access, altmetrics and research identifiers, so that it changed from a pure bibliometrician to a research publications adviser – a more appealing role. The role has enabled us to maximise the potential of new subscriptions to Scopus, SciVal, and Altmetric, all obtained as part of our involvement in the research review.

## The role of the research publications adviser

The research publications adviser role involves supporting researchers throughout the research lifecycle, including researcher identity, journal choices, the publication process and post-publication monitoring of bibliometric and altmetric indicators.

Encouraging researchers to curate their own digital identity has become a key focus of the research publications adviser role. A clear digital identity is vital to ensure that researchers' works are correctly attributed and that their work is discoverable, and so easier to find, read and cite. As part of the set-up process for SciVal, we had to check the Scopus author profiles for all our research staff. It became clear that most researchers did not realise that they even had a Scopus author profile (something that they would not have created themselves) because the university had not had a subscription to Scopus previously. Through training sessions to both researchers and our graduate school, one-to-one meetings and presentations to away days, communities of practice, research groups and research division meetings, Karen has been promoting a digital researcher 'health check', which includes signing up for an Open Researcher and Contributor ID (ORCID), populating their ORCID profiles, checking Scopus author profile records and creating Google Scholar accounts. Partly as a result of recent ORCID advocacy (for example: <http://libguides.reading.ac.uk/orcid>, accessed 22 March 2017), the number of ORCID profiles registered with a University of Reading email address has grown from 387 in January 2016 to 880 in February 2017.

To support the use of bibliometric tools, Karen has been running sessions on bibliometrics so that users can understand the metrics available to them, be aware of their limitations and interpret them correctly and according

## Library support for the lifecycle of research publications

to the principles of the responsible use of metrics. This includes sessions for academic staff and graduate school students, in which she explains the peer review process. The emphasis of all these sessions has been to show the potential uses of the tools, where the data come from, how they might be used to benchmark the University of Reading's research outputs against similar institutions and how to find potential collaborators. In order to help these researchers make informed and appropriate publishing choices for their research outputs, Karen has been promoting the use of tools such as Scopus, SciVal, SCImago and Journal Citation Reports as well as other resources such as the Think Check Submit website. Through analysis of previous citation patterns for their outputs and by looking at indicators of past journal performance, she has helped researchers to hone their journal choices. We are also promoting green open access routes via CentAUR and gold through the use of funds from our Research Councils UK (RCUK) block grant, our own university gold open access fund and deals with publishers.

The research publications adviser has also been encouraging researchers to track the impact of their research outputs using a selection of bibliometric tools and Altmetric for Institutions. By finding out who is citing and talking about their work, researchers can get feedback on their journal choices, build up networks of people working in their field and interact with the readers of their research publications. An example of the closer collaboration between the library and the wider university research support staff has been working with the press team to encourage the use of digital object identifiers (DOIs) for the research papers that they were promoting in press releases and via social media. This enables any attention to the promoted outputs to be tracked using Altmetrics and makes it easier for interested readers to find and cite the research.

Researchers have to upload their research outputs to CentAUR within a limited time frame in order for them to be eligible for the next REF exercise. We've been trying to make researchers aware of the benefits of compliance by highlighting the large number of visits that the repository gets from external users searching for access to Reading's research outputs. To this end, we've been producing monthly statistics on visitor numbers, downloads, deposits, the origin of the visitors and the top downloaded items. These statistics are converted into infographics that are used for social media (our Opening Research at Reading blog [<http://blogs.reading.ac.uk/open-research/>, accessed 22 March 2017] and Twitter [[https://twitter.com/UniRdg\\_CentAUR](https://twitter.com/UniRdg_CentAUR), accessed 22 March 2017]) and for circulation to the research division leaders.

The copyright in items published in *SCONUL Focus* remains the property of the author(s) or their employers as the case may be.



# Library support for the lifecycle of research publications

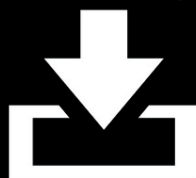
## CentAUR in 2016

A QUICK SUMMARY

Data from <http://centaur.reading.ac.uk> and IRUS-UK

### LOTS OF DOWNLOADS

270,691 total downloads for full year  
1 millionth download from CentAUR recorded in July 2016



18 items downloaded over 1000 times  
66 items downloaded over 500 times  
150 items downloaded over 250 times  
456 items downloaded over 100 times  
1006 items downloaded over 50 times

### LOTS OF VISITORS

268,855 unique visitors

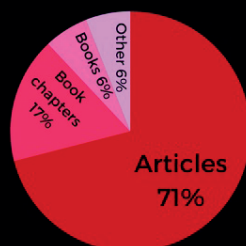
10,337,766 hits

Visitors from 199 countries



Visitors in 2016

### LOTS OF CONTENT



Item types added in 2016

3,328 new items added

36,777 total items in CentAUR

### LOTS OF CONTRIBUTORS

1,171 University of Reading authors deposited items



### TOP NEWCOMERS

- Erythristic leopards *Panthera pardus* in South Africa <http://doi.org/10.4102/abc.v46i1.2034>
- Proceedings of the 11th international conference on disability, virtual reality and associated technologies (ICDVRAT 2016) <http://centaur.reading.ac.uk/66645/>
- Executive control in bilinguals: a concise review on fMRI studies <http://doi.org/10.1017/S1366728916000249>
- Meta-analysis to integrate effect sizes within a paper: Possible misuse and Type-1 error inflation <http://doi.org/10.1037/xge0000159>
- Evidence from neurolinguistic methodologies: can it actually inform linguistic/language acquisition theories and translate to evidence-based applications? <http://doi.org/10.1177/0267658316644010>

The copyright in items published in *SCONUL Focus* remains the property of the author(s) or their employers as the case may be.

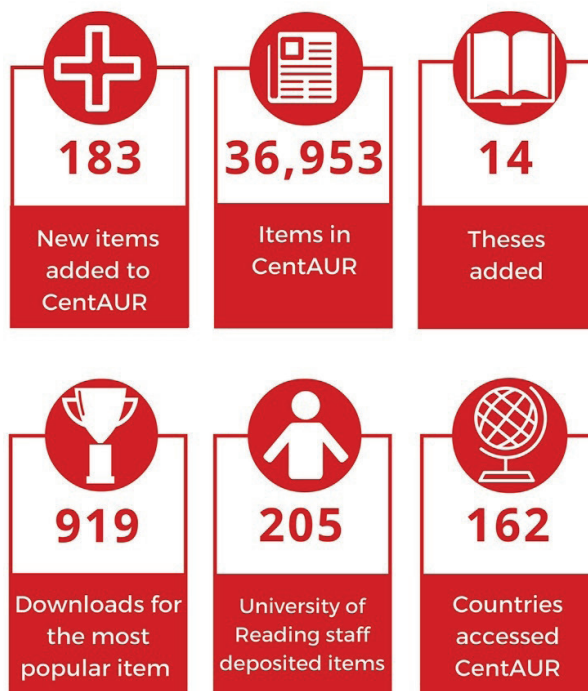
JohnsonCentAUR in 2016



# Library support for the lifecycle of research publications

## CentAUR

### Key Stats: January 2017



Statistics taken from IRUS-UK and <http://centaur.reading.ac.uk>

JohnsonCentAUR January 2017

### Supporting research through the institutional repository

The mechanism for monitoring output quality was achieved by the creation of the Research Outputs Support System (ROSS) tool within the CentAUR. The technical development of the ROSS tool was commissioned by the university with EPrints Services and became fully operational in 2016. The design and management of the ROSS tool is the joint responsibility of the library and the university's planning and strategy office and has helped to strengthen working relationships between these teams, as well as involving the library at a strategic level in supporting the research publication lifecycle. This involves collaborating on user support, policy development and technical improvement.

The ROSS tool enables the selection of research outputs deposited in CentAUR to create individual, research division and institutional summaries of output information. Individual researchers select their publications from CentAUR into their ROSS reports, to which research division leaders add evaluations and comments reflecting the review process carried out within their research divisions. The university collects information twice yearly from ROSS on the quality assessment of selected outputs, presented in Tableau dashboards, which are prepared for each research division and also aggregated at the research theme and institutional level.

The copyright in items published in *SCONUL Focus* remains the property of the author(s) or their employers as the case may be.

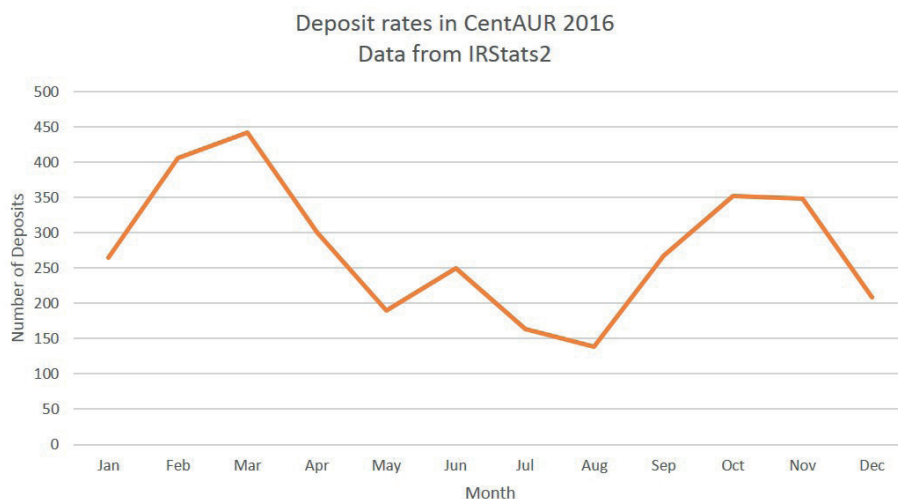


## Library support for the lifecycle of research publications

The concept of developing the ROSS tool in CentAUR was inspired by our use of the EPrints repository REF plugin in the previous REF. However, it has two distinct additional features:

- One of the key requirements of the ROSS process was that it had to allow for the inclusion of outputs at very early stages in the publication lifecycle, especially for outputs such as monographs which have a long period of development. However, CentAUR's scope only allows for publications that have at least reached the stage of acceptance for publication. To resolve this incompatibility, a 'work in progress' area within the depositor's workflow was developed for ROSS. This enables outputs that are too early for public view in CentAUR to be available for selection in the ROSS tool, but blocks their full deposit.
- To assist with understanding more about the quality and attention attracted by outputs that have progressed to later stages of the publication lifecycle, article- and journal-level bibliometrics from Scopus and the Altmetric score are imported into the ROSS tool via application programming interfaces (APIs). Google Scholar citation counts are also added manually to outputs in research divisions for which they are most relevant (mainly arts and humanities). The metrics are provided as additional information to help research division leaders in determining a quality assessment for a publication, or to provide guidance on future publishing choices.

The ROSS tool supports research planning, and will eventually be used for REF planning, but it encompasses a much wider body of outputs at all stages of the publication cycle than is required for the REF. However, there is already interest in including an indication in the ROSS reports about the levels of compliance with HEFCE's policy for open access in the next REF. The ROSS process has been valuable in driving up deposit rates into CentAUR, evidenced in the deposit peaks around the time of the twice-yearly reports; this will contribute to a greater rate of compliance with the HEFCE policy.



*Johnson–CentAUR deposits 2016*

The copyright in items published in *SCONUL Focus* remains the property of the author(s) or their employers as the case may be.



# Library support for the lifecycle of research publications

## Next steps

---

Over the last year, the library's involvement in research support has grown considerably, which has led to increased collaboration with researchers, research support staff and graduate students across the whole university. Over the next twelve months, we plan to focus on the promotion of the HEFCE policies on open access for the next REF, while also trying to assess how many of the research publications already deposited in CentAUR will be eligible for our REF submission. We shall be encouraging researchers to be more proactive in monitoring citations to their own work and in promoting and tracking their research via social media channels. It is hoped that the additional data that are available to staff through access to our new research intelligence and bibliometric tools will assist in the development of publication strategies for our research themes and divisions. This strong base of support should help us to improve our services as the university moves ahead with its ambitious research vision and towards the next REF exercise.

The copyright in items published in *SCONUL Focus* remains the property of the author(s) or their employers as the case may be.

